

# OPHTHALMIC Product Guide

A JOBSON PUBLICATION • VOLUME 147 / NUMBER 2

**Dear Doctor:**

Review of Optometry is pleased to offer you this preview of many exciting new products now available in the ophthalmic marketplace. In the pages to follow, you'll learn about innovative new medications, diagnostic instruments, corrective lens options, in-office laboratory equipment and many other new products. To obtain more information on a particular product, follow these steps:

1. Circle the corresponding number on the enclosed reader service card for each product of interest to you.
2. Affix your return address label (provided on the outer plastic covering of this issue) to the card, or fill in your name and address.
3. Return the postage-paid card to us. Educational materials will be sent directly to you by the individual companies.

Thank you for your interest and support!

RICHARD D. BAY, PUBLISHER/PRESIDENT

**RESTASIS®—THE FIRST AND ONLY THERAPY THAT ACTUALLY INCREASES TEAR PRODUCTION**

RESTASIS® Ophthalmic Emulsion is indicated to increase tear production in patients whose tear production is presumed to be suppressed due to ocular inflammation associated with keratoconjunctivitis sicca (KCS). Increased tear production was not seen in patients currently taking topical anti-inflammatory drugs or using punctal plugs.



ALLERGAN



Please see our ad in the enclosed publication for brief summary of prescribing information. © and ™ Marks owned by Allergan, Inc.

Allergan, Inc. ▲ (800) 433-8871  
www.restasis.com

Circle No. 01

Simple. Convenient. Secure.  
Visit Keeler's new eCommerce Site

Now you can purchase Keeler products 24/7 from our newly redesigned website.



Buy Online!  
keelerusa.com

Keeler

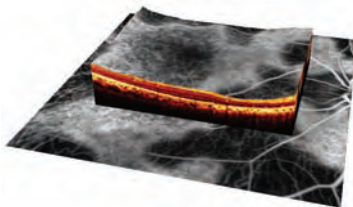
Keeler Instruments, Inc. ▲ (800) 523-5620  
www.keelerusa.com

Circle No. 02

**SPECTRALIS® FAMILY**

SPECTRALIS combines the best of Spectral-Domain OCT, confocal scanning lasers and fundus imaging to provide a comprehensive, all-in-one retinal solution. The SPECTRALIS family includes five different models, at five different price points, to meet individual practice needs.

- Up to six imaging modes
- TruTrack™ Eye Tracking
- Automatic rescans placement
- 3-micron smallest measurable change
- Heidelberg Noise Reduction™
- Network ready



ICGA+OCT Serpiginous Choroidopathy

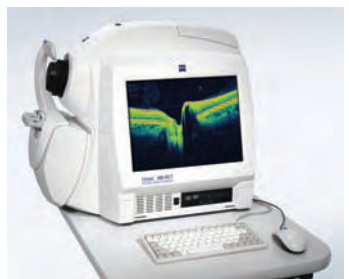


Heidelberg Engineering ▲ (800) 931-2230  
www.HeidelbergEngineering.com

Circle No. 03

**CIRRUS™ HD-OCT HIGH DEFINITION SPECTRAL DOMAIN IMAGING**

Cirrus HD-OCT offers exquisite high definition, high density OCT scans, live fundus images, and comprehensive analysis for both retina and glaucoma. Unique HD layer segmentation maps highlight relevant details. HD data acquisition provides precise registration and excellent reproducibility critical for glaucoma detection and management. RNFL thickness measurements are compared to a normative database. Review Software allows remote data access to streamline clinical workflow.



Carl Zeiss Meditec ▲ (877) 486-7473  
www.meditec.zeiss.com

Circle No. 04

Be sure to check out our Web site, too! On [www.revoptom.com](http://www.revoptom.com), click **Product Guide** button.

## SPECTRALIS® OCT WITH TRUTRACK™

At 40,000 A-scans/second, SPECTRALIS Spectral-Domain OCT scans 100 times faster than time-domain OCT. Proprietary eye tracking enables precise repeat scanning and noise filtration.

Imaging Modes: Spectral-Domain OCT and Infrared

Other Features:  
Network ready  
and automatic  
rescan



IR+OCT Macular Hole



Heidelberg Engineering ▲ (800) 931-2230  
[www.HeidelbergEngineering.com](http://www.HeidelbergEngineering.com)

Circle No. 05

## BD MEDICAL—OPHTHALMIC SYSTEMS

**BD Medical**—Ophthalmic Systems provides BD Atomic Edge™ and BD Beaver™ Safety knives with an integrated protective shield designed to protect healthcare workers from sharps injuries.

BD Visitec™ single-use instruments, including: Bonn, Capsulorhexis and Macpherson Forceps, Eye Speculum, Needle Holder, Vannas and Westcott Scissors, Buratto's Hook, Sinskey Hook and Straight Micro-manipulator.

BD CustomEyes™, a custom surgery kit for any type of ophthalmic surgery including: Cataract, Refractive, Vitreoretinal, Oculoplastic and Glaucoma, with all-in-one packaging, which may reduce inventory and environmental waste.



BD Medical ▲ (781) 906-6926  
[www.bd.com/ophthalmology](http://www.bd.com/ophthalmology)

Circle No. 06

## OASIS TEARS™ PRESERVATIVE-FREE EYE DROPS

Oasis TEARS™ and Oasis TEARS™ PLUS

viscoadaptive lubricating eye drops coat, lubricate and moisten delicate ocular tissue. With each blink this unique drop recoats the surface of the eye for longer lasting relief.

- Preservative-free
- Instant relief
- Fewer applications required.



We invite you to FEEL THE DIFFERENCE.

OASIS Medical, Inc. ▲ (800) 631-7180  
[www.oasisTEARS.com](http://www.oasisTEARS.com)

Circle No. 07

## ALL OMEGAS ARE NOT CREATED EQUAL

Omega Eye Health's nutraceuticals are specifically formulated with high amounts of EPA and DHA—the two main components of Omega-3s from fish—in the natural triglyceride form for optimal absorption. *Dry Eye Omega Benefits*® alleviates inflammation and systemically supports healthy tear production. *Eye Omega Advantage*®, with Lutein and Zeaxanthin, protects the macular region of the eye and promotes healthy vision.



PHYSICIAN RECOMMENDED NUTRICEUTICALS

OmegaEye Health, LLC ▲ (888) 820-5433  
[www.OmegaEyeHealth.com](http://www.OmegaEyeHealth.com)

Circle No. 08

## CLARITY H<sub>2</sub>O MONTHLY LENS

- All-day comfort and dry eye Relief
- All-day visual clarity, second to none
- A comfort upgrade for SiHy lens wearers
- 3 base curve options for the optimum fit
- Better patient compliance and improved patient retention
- Greater patient affordability & enhanced practice profitability
- Available in eco-friendly 12 packs with >20% savings vs. 6 pack price



Hydrogel Vision Corporation ▲ (877) 336-2482  
[www.hydrogelvision.com](http://www.hydrogelvision.com)

Circle No. 09

## OPTOMETRY OVERVIEW

A leader in intra-office communications for 25 years, Comlite Systems will help you manage your patient flow. Our light signaling systems allow you to discreetly notify technicians when they are needed, notify optical when you are finished with an exam, know which patient is next, and how many patients are waiting to be seen. An optional voice-intercom allows you to speak to personnel in a single room, a group of rooms or all locations in the office. For more information, call 800-426-5271 or visit us at [www.comliteinfo.com](http://www.comliteinfo.com).



Comlite ▲ (800) 426-5271  
[www.comlite.com](http://www.comlite.com)

Circle No. 10

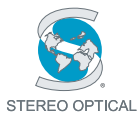
## FUNCTIONAL VISION ANALYZER™

### Contrast Sensitivity Testing with Two Glare Levels

The FVA offers a number of exams to evaluate functional vision and quality of vision. Background illumination levels inside the unit are constantly monitored and controlled.

Exams include:

- Visual Acuity – monocular and binocular at near, distance, and mid-range (optional)
- Contrast Sensitivity testing with F.A.C.T.® (Daytime/Nighttime; with glare/without glare)
- Stereopsis – Stereo Depth Perception testing
- Color Perception testing
- Potential Acuity (pin hole) The NEW upgraded EyeView® software utilizes a digital image processor to produce a pictorial model of the patients' functional vision.

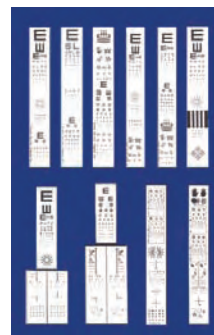


Stereo Optical ▲ (800) 344-9500  
www.functionalvisionanalyzer.com

Circle No. 11

## PROJECTOR SLIDES

Stereo Optical's projector slides are made of high-quality photographic film, sealed between two pieces of glass to ensure sharp optotypes and maintain the integrity of the tests. Each slide can be adjusted for use in any testing lane. Available in Standard or Vectographic models, for children through adults.



STEREO OPTICAL

Stereo Optical ▲ (800) 344-9500  
www.stereooptical.com

Circle No. 12

## THE NEW DISTANCE RANDOT® STEREOTEST

Finally, a test for distance stereopsis for patients as young as 4 years of age. Test includes:

- 4 tests in 1 booklet (400 sec of arc to 60 sec of arc)
- 1 pair of Standard 3-D Viewers and 1 pair of Pediatric 3-D Viewers
- Affordable
- Portable and readily available



*"Distance stereoaucuity measured using Distance Randot showed overall improvement following surgery for intermittent exotropia."*

Eileen E. Birch, Ph.D.  
Senior Research Scientist,  
Retina Foundation of the Southwest



Stereo Optical ▲ (800) 344-9500  
www.stereooptical.com

Circle No. 13

## NEW REVISED INFANT TELLER ACUITY CARDS® II

**New Features Include:**

- New glare-free laminated test cards for increased durability
- New digitally printed test cards
- No edge artifacts

**Proven Features still include:**

- Meets AOA guideline for infant vision testing

**Testing Formats Available:**

- TAC II Full set: 17 cards (from 20/3200 to 20/20)
- TAC II Half set: 8 cards (from 20/3200 to 20/30)



STEREO OPTICAL

Stereo Optical ▲ (800) 344-9500  
www.stereooptical.com

Circle No. 14

## NEW STEREOTESTS

**New Features Include:**

- Durable leatherette testing booklet
- Polarized 3-D cleanable lenses
- Sturdy hard plastic viewer frames

**Testing Formats Available:**

- Stereo Fly
- Randot®
- Stereo Butterfly
- Random Dot E



STEREO OPTICAL

Stereo Optical ▲ (800) 344-9500  
www.stereooptical.com

Circle No. 15

## BORISH VECTOGRAPHIC NEARPOINT CARD II

Designed by Dr. Irving Borish and the Ophthalmic Research Institute to meet all nearpoint testing needs. The test works in conjunction with the polarized filters on the phoropter.

**Test:**

- Binocular and monocular cross cylinder
- Binocular refraction
- Binocular and monocular visual acuity
- Binocular accommodative range
- Random dot and real contour stereopsis
- Horizontal fixation disparity
- Horizontal and vertical phoria
- Horizontal and vertical associated phoria



STEREO OPTICAL

Stereo Optical ▲ (800) 344-9500  
www.stereooptical.com

Circle No. 16

For information about the products above, contact Stereo Optical:  
Telephone (800) 344-9500, Fax (773) 777-4985, e-mail: SALES@stereooptical.com, internet: www.stereooptical.com

## STEREO OPTICAL VECTOGRAMS

Stereo Optical has set the standard for vision training. Available in fixed or variable styles to accommodate unlimited base-in/base-out training. Each Vectogram includes one pair of 3-D viewers.

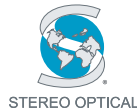
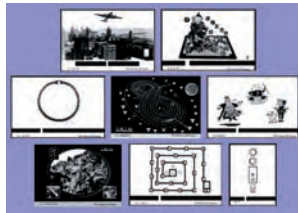
Choose from:

**Variable:**

- Quoits
- Spirangle
- Clown
- Chicago Skyline
- Mother Goose
- Stereotest
- Basic Fusion

**Fixed:**

- Acuity Suppression
- Figure Eight
- Compass Points



**Stereo Optical** ▲ (800) 344-9500  
www.stereooptical.com

Circle No. 17

## EYEQUIP'S PICCOLO CORNEAL TOPOGRAPHER FOR FREE\*

The Piccolo's advanced miniaturization technology offers extreme reliability and a competitive price.

Designed to mount on most slit lamps, the Piccolo offers the same features and software platform as the Keratron and Keratron Scout.

Features include: Standard maps including Corneal Wave Front, auto-capture, repeatability check, free software updates and networking and Wave Contact Lens Design Software.

\*Wave lens fitters qualify for rebates equal to the Piccolo purchase price. Call 800.393.8676



**EyeQuip** ▲ (800) 393-8676  
www.eyequip.com

Circle No. 18

## NON-MYDRIATIC ZEISS FUNDUS CAMERAS

Featuring legendary ZEISS optics, the VISUCAM<sup>®</sup> PRO NM, VISUCAM<sup>®</sup> NM/FA and the new VISUCAM<sup>®</sup> NM/FA with autofluorescence and ICG capability enable you to photograph through undilated pupils as small as 3.3mm.

All three cameras feature non-mydriatic color photography, but VISUCAM<sup>NM/FA</sup> and VISUCAM<sup>NM/FA</sup> with autofluorescence also allow you to perform fluorescein angiography to facilitate diagnosis and confirmation of retinal diseases.



**Carl Zeiss Meditec** ▲ (877) 486-7473  
www.meditec.zeiss.com

Circle No. 19

## SC-1700

The New SC-1700 LCD Acuity Chart System incorporates polarization for stereo and binocular vision testing. A dedicated refracting device with an extreme emphasis on precise visual acuities, the SC-1700 utilizes a high resolution 17-inch LCD screen for high performance acuity presentations. The SC-1700 has contrast sensitivity testing and letter/character randomization, making it an industry leader.



**Marco** ▲ (800) 874-5274  
www.marco.com

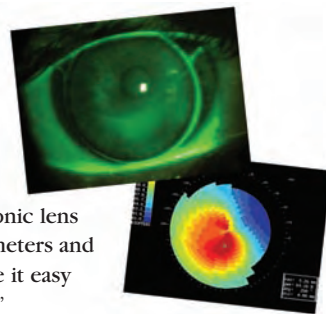
Circle No. 20

## COMFORTKONE

- Clinically Proven
- FDA Cleared
- Keratoconus fitting made easy and reliable!

"The ComfortKone is my keratoconic lens of choice. It's wide range of parameters and highly flexible fitting system make it easy to use on a wide variety of cones."

*Renee Reeder, OD, FFAO  
Associate Professor  
Chief, Cornea Center  
Illinois College of Optometry*



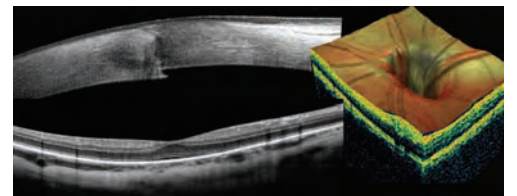
For more information call 800-223-1858 or visit our website  
www.metro-optics.com

**Metro Optics** ▲ (800) 223-1858  
www.metro-optics.com

Circle No. 21

## RTVUE FROM OPTOVUE

The leading Fourier-domain OCT system, the RTVue from Optovue, Inc (Fremont, CA), is now the **Most Comprehensive OCT** available with Retina, Glaucoma and now **Cornea-Anterior Segment** scanning option. The system includes a Normative Database for both Glaucoma and Retina, Symmetry and Progression reports, and the exclusive "Deviation from Normal" and "Significance of Normal" analysis developed by USC Doheny for "at a glance" analysis of meaning changes. With scans targeted towards fast, high-resolution imaging of retina-based pathology, 3D imaging and the new CAM option, the RTVue may be the only OCT your practice will ever need.



**Optovue, Inc.** ▲ (866) 344-8948  
www.optovue.com

Circle No. 22

## ODYSSEY MEDICAL, LEADER IN PUNCTAL OCCLUSION, OFFERS THE PARASOL®

Odyssey Medical, Inc. offers the Parasol® Punctal Occluder, the #1 choice for punctal occlusion. The Parasol's unique design is exceptionally easy to insert, requiring little or no dilation. Simple sizing means two sizes fit virtually all. In addition, Odyssey offers an exclusive 30-day pop-out guarantee. Also available is collagen and EXTEND™, an absorbable synthetic punctal implant which provides occlusion for up to three months.



Odyssey ▲ (888) 905-7770  
www.odysseymed.com

Circle No. 23

## KNOCK OUT OCULAR ALLERGIES

Alrex® (loteprednol etabonate ophthalmic suspension 0.2%) is indicated for the temporary relief of the signs and symptoms of seasonal allergic conjunctivitis.

Full prescribing information can be found at [www.bausch.com](http://www.bausch.com).

Alrex is a registered trademark of Bausch & Lomb Incorporated.



Bausch & Lomb Incorporated ▲ (800) 323-0000  
www.bausch.com

Circle No. 24

## KOWA NONMYD A-D III FUNDUS CAMERA

The nonmyd -D III high resolution digital fundus camera features Kowa's exclusive Aspherical Optical System which renders superior high quality images. The camera integrated with Kowa's VK2 Software solution offers a high-volume Shoot and Forget automatic image saving feature, high capacity image storage, along with restoration and image montage comparison with ease.



Kowa Optimed, Inc. ▲ (310) 327-1913  
www.kowa-usa.com

Circle No. 25

## KOWA AP-5000C AUTOMATIC PERIMETER

The automatic perimeter offers 25 types of screening test programs including standard, precision, center, periphery, glaucoma and v. meridian. In ocular fundus perimetry, the visual field is examined with an ocular fundus image displayed on the screen. Our system offers the capability to overlap the ocular fundus image and the perimetry result so you can grasp the correspondence between the two.



Kowa Optimed, Inc. ▲ (310) 327-1913  
www.kowa-usa.com

Circle No. 26

## REVITALEYES

- Clinically Proven
- FDA Cleared
- Post Refractive Surgery Soft Lens

RevitalEyes features a simple diagnostic fitting system. Order your diagnostic fitting kit today for only \$25.00

\*This lens is not recommended for PKP

For more information call 800-223-1858 or visit our website at [www.metro-optics.com](http://www.metro-optics.com)



**RevitalEyes™**  
POST SURGICAL

Metro Optics ▲ (800) 223-1858  
www.metro-optics.com

Circle No. 27

## NP-3S—FAST, QUIET AND AFFORDABLE CHART PROJECTION

The NP-3S Chart Projector combines silent operation with fast, random access functionality. The programmable NP-3S includes various optotypes, advanced polarized slides, 5 letters/line and multiple 20/20 lines.

Add a NP- 3S Chart Projector to your office and start enjoying the benefit today.

Designed by NIKON, built by RIGHTmedical.



Right Medical ▲ (888) 224-6012  
www.rightmedical.com

Circle No. 28

## OCUSOFT® LID SCRUB™ PLUS— KILL THE BUGS WITH LESS IRRITATION

OCuSOFT® Lid Scrub™ PLUS Extra Strength Eyelid Cleanser is recommended for patients with moderate to severe eyelid conditions. This latest innovation in eyelid hygiene is purposely designed as a “Leave-On” formula to maximize patient compliance with minimal eye irritation. Additionally, a recent study has demonstrated OCuSOFT® Lid Scrub PLUS™ to kill Demodex mites.



**CYNACON/OCuSOFT ▲ (800) 233-5469**  
[www.ocusoff.com](http://www.ocusoff.com)

Circle No. 29

## INTRODUCING BLINK® TEARS LUBRICATING EYE DROPS FOR DRY EYE

Introducing the Blink® Tears line of artificial tears includes 3 formulations containing (PEG) Polyethylene Glycol 400 and a blend of ingredients that are found naturally in the eye. With its visco-adaptive properties, each formula adapts to patients dry eye needs.



- A greater than 60 min retention time along with providing better relief than their competitors.
  - Significantly less blur vs. Systane® drops.
  - Significant improvement in comfort and vision quality over time.
  - Gentle OcuPure® preservative that disappears in your eye.
- Experience Blink® Tears and Blink® Tears Preservative-Free Formula (mild-moderate) and Blink GelTears® (moderate-severe), a thicker more viscous version of Blink® Tears for enhanced daytime and nighttime comfort.

Circle No. 30

**Advanced Medical Optics ▲ (800) 821-1515**  
[www.amo-inc.com](http://www.amo-inc.com)

## FF 450PLUS FUNDUS CAMERA WITH VISUPAC® DIGITAL IMAGING AND ARCHIVE MANAGEMENT SYSTEM

The ZEISS FF 450<sup>plus</sup> provides the highest resolution available, features telecentric optics that guarantee precise retinal measurements, and offers increased number of flash settings. VISUPAC Digital Imaging System offers next generation sensors to capture the incredible quality of autofluorescence images—in just one shot. Our high-end systems offer image management with Review Software and an up-to-date Network Archiving Solution.



**Carl Zeiss Meditec ▲ (877) 486-7473**  
[www.meditec.zeiss.com](http://www.meditec.zeiss.com)

Circle No. 31

## STRATUS OCT™ OPTICAL COHERENCE TOMOGRAPHY WITH ADVANCED SERIAL ANALYSIS

New applications are available to facilitate the interpretation of glaucoma and retinal analyses. Guided Progression Analysis™ (GPA) Advanced Serial Analysis plots a linear regression analysis of average RNFL thickness data, and reports statistically significant regression of RNFL thickness. Advanced Analysis tools allow the user to adjust the retinal segmentation results used for calculation and analysis.



Circle No. 32

**Carl Zeiss Meditec ▲ (877) 486-7473**  
[www.meditec.zeiss.com](http://www.meditec.zeiss.com)

## NEW! SNUGPLUG FROM FCI

FCI introduces the SnugPlug—a one size fits all punctal (not intracanalicular) plug. SnugPlugs are packaged preloaded and stretched for easy insertion. Once released in punctum, the plug returns to its natural shape for secure retention.

Also from FCI: Slim Plugs—ideal for tiny puncta; FCI's original plugs feature anatomy-friendly slanted col-larets; TearSaver Plugs; ProLong 3-month plugs; collagen plugs; flow-through plugs; and Zone Quick.



**FCI Ophthalmics ▲ (800) 932-4202**  
[www.fci-ophthalmics.com](http://www.fci-ophthalmics.com)

Circle No. 33

## THE DGH PACHETTE IS THE EXCLUSIVE OHTS PACHY-METER

There are over 10,000 DGH pachymeters in use around the world. The DGH 55 Pachmate handheld is the world's smartest, lightest ultra high-quality pachymeter. DGH has introduced the Pachette 3. The Pachette 3 has all the features of the very best pachymeters, but at an economical price. The Pachmate and the Pachette 3 were designed specifically for glaucoma and LASIK screening. You will find DGH ultrasound products to be the perfect blend of quality and technology. Please see our A-Scans and combination A-Scan/Pachymeter units. DGH has been serving the needs of eye care professionals since 1982.

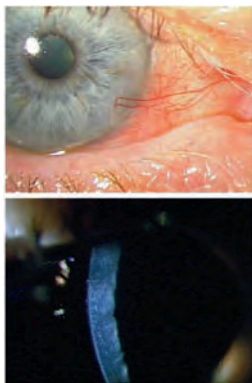


Circle No. 34

**DGH Technology, Inc ▲ (800) 722-3883**  
[www.pachymeter.com](http://www.pachymeter.com)

## TELSCREEN'S EYERES DIGITAL IMAGING SYSTEM

Only TelScreen's EyeRes Slit-Lamp Digital-Imaging System provides high-resolution digital stills and videos of the Anterior Segment and retina without flash or indirect lighting. Only TelScreen's programmed medical-grade camera gives audit-quality photos of 559 Medical Necessity codes. Two Anterior Segment photos per week make the monthly payments! Doctors say, "easy-to-use, beautiful images, patients love this, best purchase I've made, great service."



**Tsi. TelScreen**

TelScreen ▲ (800) 769-4933  
www.telscreen.com

Circle No. 35

## DRY EYE DROPS THAT TRIGGER TEAR FILM PRODUCTION—WITHOUT SIDE EFFECTS—OK WITH CONTACTS

Two separate eye drop formulas, one for Women and one for Men, which stimulate the production of all three tear film layers—relieving symptoms with causation ranging from inflammation to aqueous deficiency, including Sjogren's Syndrome. The Women's formula has ingredients for dryness related to hormonal fluctuations. The Men's drop has others for male pattern dryness.

OK WITH CONTACTS—NO SIDE EFFECTS—NO PRESERVATIVES—WORKS FAST & FEELS GREAT  
CALL FOR A FREE INFO/SAMPLE PACK



**Professional Quality—Available Via Doctors Only!**

Natural Ophthalmics, Inc. ▲ (877) 220-9710  
www.naturaleyedrops.com

Circle No. 36

## ULTRAPLUG™ PUNCTAL PLUGS Silicone Synthetic Absorbable Collagen

Silicone plugs are packaged two per box, sterile and pre-loaded on a disposable inserter.

Call and mention promo code AD2301 for introductory specials and free patient brochures!



**UltraPlug™**  
Punctal Plugs

Angiotech ▲ (866) 823-6543  
www.sharpoint.com

Circle No. 37

## FINALLY—AN ALLERGY DESENSITIZATION EYE DROP—OK WITH CONTACTS

"I have allergies and your drops are better than Patanol...I have no problem telling patients that these are the newest and best drops available and they are not available in stores, so you need to buy them here." Dr. F.S.

OK WITH CONTACTS—NO SIDE EFFECTS—NO PRESERVATIVES—WORKS FAST & FEELS GREAT

CALL FOR A FREE INFO/SAMPLE PACK

**Professional Quality—  
Only Available Via Doctors  
Made in the USA**



Natural Ophthalmics, Inc. ▲ (877) 220-9710  
www.naturaleyedrops.com

Circle No. 38

## THE MARCO EXAM LANE ADVANTAGE

Marco lane equipment is designed, engineered and built to be exceptionally strong and functional. Strict attention to details and attractive aesthetics is a common theme throughout our entire product line. All of our exam lane products—from chairs and stands to slit lamps, refractors and sophisticated acuity devices—offer the most trouble-free, effortless operation in the industry. They work better because they're constructed better. And, when you purchase an entire lane of Marco through one of our many Authorized Distributors, you'll save even more.



**MARCO**  
THE LEADER IN VISION DIAGNOSTICS®

Marco ▲ (800) 874-5274  
www.marco.com

Circle No. 39

## CATARACT?

Her last doctor said to wait until it worsens...then have surgery...  
*Now you have the tools to halt or reverse cataracts.*

- Cineraria Homeopathic Eye Drops trigger the body's ability to clear the crystalline lens.
- Oral Absorption Nutraceuticals provide high blood level absorption of herbs & vitamins needed to clear the lens.

CALL FOR A FREE INFO/SAMPLE PACK

**Professional Quality—  
Only Available Via Doctors  
Made in the USA**



Natural Ophthalmics, Inc. ▲ (877) 220-9710  
www.naturaleyedrops.com

Circle No. 40

## THE WORLD'S FIRST COMBINATION UNIT WITH NCT — THE MARCO M3®

The M3 from Marco is a combination automatic refractor, keratometer and non-contact tonometer. The M3 uses a highly sensitive CCD camera, which creates high-quality images for accurately measuring patients with cataracts, corneal opacities, IOLs and post-Lasik cases. Other features include automated eye alignment, auto-fogging system, tilt screen, motorized chinrest and new ergonomic design. The M3 easily integrates with other Marco refraction systems.



Marco ▲ (800) 874-5274  
www.marco.com

Circle No. 41

## AZASITE® (AZITHROMYCIN OPHTHALMIC SOLUTION) 1% MACROLIDE CLASS

AzaSite® is indicated for the treatment of bacterial conjunctivitis caused by susceptible isolates of: CDC coryneform group G, *Haemophilus influenzae*, *Staphylococcus aureus*, *Streptococcus mitis* group, and *Streptococcus pneumoniae*. AzaSite® achieves high and sustained ocular tissue concentrations while providing both anti-inflammatory and anti-infective activity.



Inspire ▲ (877) 800-4536  
www.inspirepharm.com

Circle No. 42

## THE AHMED™ GLAUCOMA VALVE

The Ahmed™ Glaucoma Valve uses state-of-the-art technology and innovation in controlling IOP, lowering the chance of hypotony and reducing drug use.

New World Medical Inc. is leading the way in glaucoma drainage technology with its precise valve systems and companion products, such as: the Bi-Plate valve system, the Tube Extender™, the Pars Plana Clip™ and the Tube Inserter™.

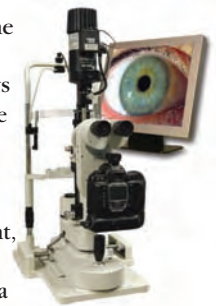


New World Medical, Inc. ▲ (909) 466-4304  
www.ahmedvalve.com

Circle No. 43

## ZOOM OPTICS AND BROAD PROGRAMMABLE IMAGING CAPABILITIES

Digital photography has never been easier. The advanced RS-1000 Digital Photo Slit Lamp includes a flip-in/out beam diverter that allows 100% of the flash illumination provided by the programmable flash integration device to reach the digital camera. Easily programmed to provide the perfect flash intensity for all ophthalmic imaging from the anterior segment, through the vitreous, to the posterior pole. The system uses a NIKON D200 digital camera to provide ultra-high resolution professional quality digital images. The RS-1000 is based on the design of the NIKON FS-3 slit lamp that enjoyed worldwide popularity with its unrivaled ZOOM optical system and professional-level imaging.



Right Medical ▲ (888) 224-6012  
www.rightmedical.com

Circle No. 44

## RTA5 AND MACUSCOPE

The RTA5 delivers powerful diagnostics through digital Fundus Imaging, Posterior Pole scanning, and RNFL Thickness Analysis, with integrated data and follow-up analysis. The MacuScope assesses a patient's risk for developing Macular Degeneration by measuring macular pigment density. Risk can be diminished by recommending MacuHealth with LMZ3, a once daily oral supplement containing all three macular carotenoids.



Marco ▲ (800) 874-5274  
www.marco.com

Circle No. 45

## REICHERT IOPAC® HANDHELD PACHYMETER

Bring glaucoma risk into focus with the Reichert IOPac Handheld Pachymeter, the only pachymeter with built-in glaucoma risk analysis. The IOPac features handheld Palm® powered technology, a glaucoma risk calculator, thickness mapping capability, CCT-based IOP adjustment, 20 MHz ultrasound probes and quick data exporting. Weighing only 7 ounces, the IOPac Handheld Pachymeter provides pocket-sized mobility. PROUDLY MADE IN THE USA.



Reichert, Inc. ▲ (888) 849-8955  
www.reichertoi.com

Circle No. 46



**TEARS AGAIN® HYDRATE™—THE ONLY PRESCRIPTION NUTRITIONAL SUPPLEMENT**

Tears Again® HYDRATE™ is specially formulated for the Dietary Management of Dry Eye Syndrome, Blepharitis and Meibomian Gland Dysfunction. Tears Again HYDRATE™ contains unique proprietary blends of Essential Fatty Acids (EFAs):

- 1000 mg of Omega 3 Flaxseed Oil
  - 500 mg of Omega 6 Evening Primrose Oil
- For increased bioavailability, Tears Again® HYDRATE™ utilizes a proprietary Hypersorb™ Technology liposome process.



Circle No. 47

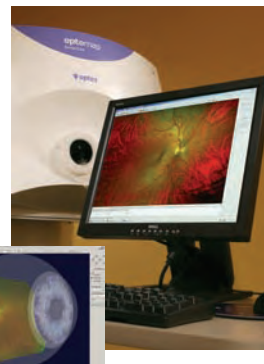
**CYNACON/OCUSOFT ▲ (800) 233-5469**  
[www.ocusoft.com](http://www.ocusoft.com)

**OPTOS P200 DEVICE**

The Optos P200 device, featuring the **optomap®** Retinal Exam and **optomap®** plus Medical Retinal Exam, digitally captures ultra-widefield images (up to 200°/82% of the retina) in a quarter of a second without mydriasis. With Optos's unique business model, you can acquire cutting-edge technology with no capital outlay.

The **optomap®** Retinal Exam provides:

- Enhanced disease detection
- New wellness revenue stream
- Superior documentation
- Outstanding patient education
- Practice differentiation
- Free software upgrades.



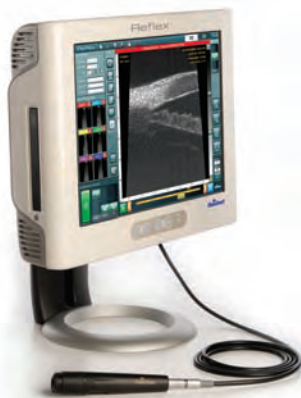
Circle No. 48

**Optos ▲ (800) 854-3039**  
[www.optos.com](http://www.optos.com)

**REICHERT INTRODUCES NEW REFLEX™ UBM**

The NEW Reflex Ultrasound Bio-Microscope (UBM) is compact and easy to set up and use. It enables operators to image pathologies, which may be obstructed by opacities or ocular structures, that OCT technology cannot. The touch screen is simple to use, and the unique probe design allows the operator to examine the patient in any position, without the need for a traditional water bath.

PROUDLY MADE IN THE USA.

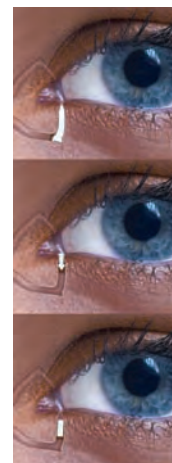


Circle No. 49

**Reichert, Inc. ▲ (888) 849-8955**  
[www.reichertoi.com](http://www.reichertoi.com)

**EXTENDED DURATION VARIETY PACK—NEW FROM OASIS**

OASIS introduces an Extended Duration 3-month plug Variety Pack which includes a selection of 0.2mm through 0.5mm plugs. Flow Control partial occlusion plugs were also introduced to our SOFT PLUG® line, making this the most complete selection of punctal occlusion products offered. Also available: SOFT PLUG® Silicone in 2-pack, 6-pack or Economy Pack, Collagen, Extended Duration and Form Fit® Hydrogel plugs.



Circle No. 50

**OASIS Medical, Inc. ▲ (800) 528-9786**  
[www.oasismedical.com](http://www.oasismedical.com)

**TRAVATAN Z® SOLUTION**

TRAVATAN Z® solution is formulated to remove benzalkonium chloride (BAK) from Alcon's existing TRAVATAN® solution and replaces BAK with SOFZLA®, a robust ionic buffered preservative system. Alcon developed this BAK-free version of TRAVATAN® because long-term use of BAK-containing products may compromise the ocular surface and exacerbate conditions such as dry eye.



Circle No. 51

**Alcon Laboratories, Inc. ▲ (800) 451-3937**  
[www.alconlabs.com](http://www.alconlabs.com)

**FORESEE PHP®**

Foresee PHP® is the only FDA-cleared device indicated for the detection of CNV and long term monitoring of dry AMD. Clinically proven with an unsurpassed 82% sensitivity and 88% specificity, it detects conversion before vision loss occurs, allowing for timely referral and treatment.

Manufactured by Notal Vision, the Foresee PHP is distributed in the U.S. by Sightpath Medical. Visit [www.sightpathmedical.com](http://www.sightpathmedical.com).



Circle No. 52

**Sightpath Medical ▲ (800) 728-9615**  
[www.sightpathmedical.com](http://www.sightpathmedical.com)

## RELIANCE 520® EXAMINATION CHAIR

Reliance's stylish new 520 chair top reclines up to 40 degrees while the patient maintains position. The pneumatically assisted release mechanism is easily accessible from both sides of the chair.

Top-notch features:

- corded foot switch
- dual rotation locks
- flip-up foot rest
- fixed non-articulating headrest
- upward-rotating armrests for convenient ingress and egress from either side of the chair
- upholstered and padded armrests for comfort
- 22 in. wide seat cushion with matching calf pad apron.



With the MyColor selections, customize the 520 for any office.

Reliance Medical Products ▲ (800) 735-0357  
www.reliance-medical.com

Circle No. 53

## STIMULI VISUAL ACUITY SYSTEM

The Stimuli is a self-contained visual acuity system packaged in a slim-line Apple computer. Place it on a cabinet or hang it on the wall.

- Randomizes optotypes and eliminates patient memory effect.
- Calibrates for long, short, or folded exam rooms.
- Offers pediatric patients special video and fixation targets.
- Resolves to sub-pixel accuracy.



Circle No. 54

Haag-Streit USA ▲ (800) 787-5426  
www.haag-streit-usa.com

## THE FX-920® EXAMINATION CHAIR

The FX-920 sets a new standard for design, but it retains the core value of all Reliance products—rugged durability. All surfaces of the chair are designed to support a patient's entire weight.

Ergonomic full-power tilt is easy on the practitioner as well as comfortable for the patient.

A full complement of controls is available on both sides of the chair, and a detached dual footswitch adds flexibility.



Reliance Medical Products ▲ (800) 735-0357  
www.reliance-medical.com

Circle No. 55

## CONTACT GLASSES WITH HAAG-STREIT OPTICS

Enjoy the optical brilliance of a Haag-Streit Slit Lamp in a full line of diagnostic and laser contact glasses. In addition to the Classic Goldmann Glass, the HS line includes glasses for Children, Fundus examination, Ora Serrata, Glaucoma, Iridectomy, Vitrectomy, and CGVI. Lenses are crafted using special bonding technique and total quality control.



Circle No. 56

Haag-Streit USA ▲ (800) 787-5426  
www.haag-streit-usa.com

## RELIANCE 905 COMMAND CENTER

The Reliance 905 Pendulum delivery system is designed for smooth, effortless delivery of ophthalmic instruments. The tabletop lifts and delivers the slit lamp as it automatically turns on. It moves laterally to position a second instrument.

The phoropter is delivered via a spring-activated counterbalanced arm with a 10" range of vertical travel.

Reliance's 905 Command Center centralizes controls for room lights, three rechargeable instrument wells and the examination chair. Instrument moves automatically, triggering pre-selected lighting.



Reliance Medical Products ▲ (800) 735-0357  
www.reliance-medical.com

Circle No. 57

## TONOSAFE DISPOSABLE PRISMS

Tonosafe Disposable prisms used with Goldmann Applanation tonometers or Perkins tonometers eliminate the risk of cross-infection between patients. The prisms are developed for single patient use and take only a moment to position. Calibrated to Goldmann standards, the Tonosafe is the same mass as the Goldmann prism so no conversion of results is necessary. The clear acrylic prisms are packaged in boxes containing 100 prisms and one prism holder.

Circle No. 58

Haag-Streit USA ▲ (800) 787-5426  
www.haag-streit-usa.com

## HAAG-STREIT BQ 900® SLIT LAMP

The BQ 900 was designed for advanced microscopy. A universal modular system offers simultaneous video and still photography with professional or consumer cameras. Choose accessories such as a teaching scope, inclined eyepieces, a Goldmann tonometer or the stereo variator for the retinal specialist. The convergent view of the BQ 900 offers a large binocular field with high resolution and depth of focus.



Haag-Streit USA ▲ (800) 787-5426  
www.haag-streit-usa.com

Circle No. 59

## HAAG-STREIT BX 900® SLIT LAMP

The BX 900 provides features for the professional ophthalmic photographer. Integrated flash, fully synchronized with the camera, slit and background illumination, are all controlled through a release mechanism immediately beside the slit lamp joystick, as well as adapters allowing for the fitting of many top of the range professional level digital and 35 mm cameras, ensure ophthalmic imaging of the highest possible quality. The camera is mounted above the microscope allowing easy access to the patient, especially useful when photographing in conjunction with hand-held diagnostic lenses.



Haag-Streit USA ▲ (800) 787-5426  
www.haag-streit-usa.com

Circle No. 60

## CAMERA MODULE CM-900®

The CM 900® Retrofits to any existing BP 900® or BD 900® Slit Lamp.

Freeze technology and the History Trigger function allows you to shoot the perfect image every time.

- Identify the shot area, and click. Digital video capture automatically begins.
- Depress the hands-free footswitch to shoot.
- Review on the monitor, choose from images before and after you clicked, pick the best shot.



Haag-Streit USA ▲ (800) 787-5426  
www.haag-streit-usa.com

Circle No. 61

## HAAG-STREIT IM 900®

The Haag-Streit IM 900 complements the Haag-Streit BQ 900 Slit Lamp with integrated imaging features. Freeze technology captures the image at the exact moment the trigger is pressed. The history trigger can be used to record the moments prior to the image capture and allows the practitioner to scroll through the images to select the optimum one. True aperture allows complete control of the depth of field.



Haag-Streit USA ▲ (800) 787-5426  
www.haag-streit-usa.com

Circle No. 62

## OCTOPUS 300 SERIES PERIMETERS

OCTOPUS perimeters provide 100% eye fixation control. Tests prioritize visual field for speed and reduce patient fatigue. Octopus allows operation from any side and fits into tight office spaces. With the TOP strategy, a full threshold exam can be performed in a little over 2 minutes. The clear Octopus Seven-in-One report provides all the information necessary for a precise assessment of the visual field.



Haag-Streit USA ▲ (800) 787-5426  
www.haag-streit-usa.com

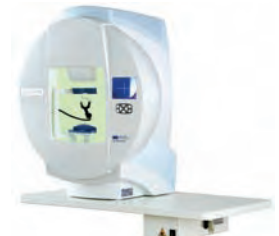
Circle No. 63

## OCTOPUS 900® GOLDMANN PERIMETER

The Octopus 900 full field perimeter offers Goldmann kinetic perimetry in manual, semi and fully automated modes. It performs a full 90 degree field with 2.5 minute central 30 degree testing. The compact design features a Goldmann full-size spherical bowl that covers the entire 90 degree field. The Octopus 900 offers all perimetry examination methods in one instrument.

- Goldmann Kinetic
- Static White/White
- Blue / Yellow (SWAP)
- Red / White
- Flicker perimetry
- Low vision
- Color Perimetry (combine any stimulus/background in custom test)

Accurate, Replicable Results: 100% fixation, unique to the Octopus product line, assures accurate and reproducible results.



Haag-Streit USA ▲ (800) 787-5426  
www.haag-streit-usa.com

Circle No. 64

## **TOMEY RC-5000 AUTOREFRACTOR/ KERATOMETER**

The **FIRST** touch-screen with automatic measurement...TOMEY RC-5000 Autorefractor keratometer with built-in printer—the quickest, most efficient and easiest to use.

The advanced touch-screen display allows user to perform both refraction and keratometry automatically with one single movement. Capture one eye on the display by touching the center of the pupil on the screen with your fingertip and the RC-5000 will automatically align and begin measurement.



Tomey ▲ (888) 449-4045  
www.tomeyusa.com

Circle No. 65

## **TOMEY SP-100 HANDY PACHYMETER**

Tomey introduces the latest advancement in pachymetry...the SP-100 Hand-held pachymeter with built-in printer and IOP Calculations.

Measurements are quick and simple using the TOMEY tone-assisted measurement system. Weighs only 19 ounces and comes with a long-lasting rechargeable lithium battery. Angled, straight, and disposable probes also available.



Tomey ▲ (888) 449-4045  
www.tomeyusa.com

Circle No. 66

**TOMEY TMS-4 CORNEAL TOPOGRAPHER**  
Optimum resolution, precise accuracy and broader coverage than any other product in the world including wavescans. Also includes internal dry eye software.

The unit comes complete with Klyce corneal statistics software, Keratoconus screening software, contact lens fitting software, Klyce Maeda Multiple Regression Analysis, Smolek-Klyce Classification Neural Network with bit image format. Easily networked.



Tomey ▲ (888) 449-4045  
www.tomeyusa.com

Circle No. 67

## **TOMEY RT-7000 AUTOREFRACTOR/ KERATOMETER/TOPOGRAPHER**

The all-inclusive 3-in-1 device incorporates quick and efficient touch screen alignment and auto shot. Includes built-in computer, on-board printer and internal dry eye software.

Two CCD cameras capture images providing highly accurate measurement data. Includes diameter measurement of cornea and pupil. The Indices of KAI and KRI that show Corneal Irregular Astigmatism displayed with three levels (A•B•C) at Keratometry. Absolute and Normalized color maps can be viewed for contact lens fitting and Corneal Eccentricity Index of Ortho-K Lens. TSAS (tear stability analysis software) also included.



Tomey ▲ (888) 449-4045  
www.tomeyusa.com

Circle No. 68

## **TOMEY FT-1000 NON-CONTACT TONOMETER—NEW!!** The “patient friendly” NCT.

The Touch Alignment of the FT-1000 quickly aligns the center of the eye on the center of the screen by simply touching the eye shown on the display. The lag time is reduced from the completion of alignment to the beginning of measurement 15/1,000 seconds. No repeated exams necessary. “mmHg” or “hPa” can be selected for the unit of the intraocular pressure.



CBD/Tomey ▲ (888) 449-4045  
www.tomeyusa.com

Circle No. 69

## **TOMEY EM-3000 SPECULAR MICROSCOPE** has the *first* touch screen!

Tomey has introduced a newly advanced specular microscope—the EM-3000. Its color touch screen allows ease of operation and speed in its results. It can also measure corneal thickness. Its internal computer automatically analyzes endothelial cells while the seven fixation targets make peripheral photography a snap. More cells are counted for greater accuracy.



CBD/Tomey ▲ (888) 449-4045  
www.tomeyusa.com

Circle No. 70

## INTRODUCING THE NEW DIGITAL STEREOPSIS TESTING SOFTWARE

### DIGITAL STEREO IMAGES STORED ON A FLASH DRIVE

- For the first time, test stereopsis at any distance, from a few inches to 20 feet on your computer.
- Vary target size and distance and quickly calculate disparities for each Stereo Target.
- A complete collection of all the standardized Stereo Tests you know, for kids and adults.
- Now in digital format.
- 18 different Stereo Tests. Random Dot and Line Stereogram Targets, including the Random Dot Butterfly, all with superb stereo.
- The flash drive can be used on each office computer with no additional license fees.



Synthetic Optics, Inc. ▲ (201) 847-0007

Circle No. 71

## THE DIFFERENCE IS NIGHT AND DAY

The 3-D Wave™ makes it easy for you to not only assess your patients' day vision, but their night vision as well. Many patients determine that a second pair of glasses is necessary for driving at night. Offering a night vision assessment to all of your patients will make a night and day difference in your practice.

The 3-D Wave is a combination:

- Auto Refractor
- Keratometer
- Corneal Topographer
- Pupilometer
- Wavefront Aberrometer



**MARCO**  
THE LEADER IN VISION DIAGNOSTICS™

Marco ▲ (800) 874-5274  
www.marco.com

Circle No. 72

## ALODOX™ CONVENIENCE KIT—Now Includes FREE Tranquileyes Moist Heat Therapy Goggles

The ALODOX™ Convenience Kit contains ALODOX™ (Doxycycline Hyclate 20 mg), OCuSOFT® Lid Scrub™ PLUS Extra Strength Pre-Moistened Pads, OCuSOFT® Lid Scrub™ Original Foaming Eyelid Cleanser, and new complimentary Tranquileyes™ Moist Heat Therapy Goggles and Thermoeyes™ Reusable Heat Packs. The ALODOX Kit includes OCuSOFT® Lid Scrub™ Eyelid Cleansers for adjunctive eyelid therapy and maintenance.



CYNACON/OCuSOFT ▲ (800) 233-5469  
www.ocusoff.com

Circle No. 73

## ZYLET: THE FIRST STEROID-ANTIBIOTIC COMBINATION APPROVED BY THE FDA SINCE THE 1980s

Zylet® (loteprednol etabonate 0.5% and tobramycin 0.3% ophthalmic suspension) is indicated for steroid-responsive inflammatory ocular conditions for which a corticosteroid is indicated and where superficial bacterial ocular infection or a risk of bacterial ocular infection exists and where the inherent risk of steroid use in certain infective conjunctivitis is accepted to obtain a diminution in edema and inflammation. Full prescribing information can be found at [www.bausch.com](http://www.bausch.com).

Zylet is a registered trademark of Bausch & Lomb Incorporated.



Bausch & Lomb Incorporated ▲ (800) 323-0000  
www.bausch.com

Circle No. 74

## SYNEMED EYESCAPE ADVANCED IMAGING SYSTEM

New for 2008, EyeScape's high-performance software package is now coupled with Canon's new CR-1 Non-Mydriatic Fundus Camera. Now 15.1 Megapixels. Includes networking, EMR links, Slit Lamp integration, stereo pairing, mosaic, 7 color tracks, emboss, smart back up and much more.

Call to learn about Stereo Plus, AV Mode and Retinal Assessment Module.

### Synemed Also Provides:

- Convert other camera databases to EyeScape
- Slit Lamp Imaging
- Update Film Cameras to Digital



Synemed ▲ (800) 777-0650  
www.synemed.com

Circle No. 75

## SYNEMED INTRODUCES AN EASY-TO-USE AND AFFORDABLE PERIMETER

Synemed, with over 30 years of visual field expertise, is proud to announce the latest line of perimeters. The Synemed EP-900 Series of full field, full-featured automated perimeters offers all of the features you need and want, and provides easy-to-interpret industry standard results. Models are user-friendly, with easy, two-button operation, provide the fastest test times and are easily upgradeable. Customize your own programs, combining advanced methodologies with a large selection of test patterns to screen in less than one minute and threshold in less than two minutes per eye. These all-encompassing systems are the only perimeter you'll ever need to ensure the most comprehensive patient care possible.



Synemed ▲ (800) 777-0650  
www.synemed.com

Circle No. 76

## HUMPHREY® FIELD ANALYZER WITH VFI-POWERED GPA™, HFA-NET PRO™ AND EASYCONNECT™ RCT

HFA™ II-*i* with Guided Progression Analysis™ (GPA) accurately determines the stage of disease, the rate of progression, and risk of future vision loss—all at a glance on a single page GPA summary report. Includes new Visual Field Index™ (VFI), the first center-weighted visual field assessment, EasyConnect Remote Configuration Tool (RCT) for plug-n-play connectivity, and HFA-NET Pro for efficient electronic workflow.



Carl Zeiss Meditec ▲ (877) 486-7473  
www.meditec.zeiss.com

Circle No. 77

## OPMI LUMERA® *i* MICROSCOPE

The new OPMI Lumera® *i* offers a breakthrough in surgical integration efficiency. In addition to the revolutionary red reflex, high contrast, and depth of field created with the Stereo Coaxial Illumination (SCI™), the Lumera *i* offers a touchscreen, integrated CCU for 1 or 3 chip cameras, greater X-Y range, new ergonomic foot pedal, and ethernet attachment to the pioneering OR planning system of the CALLISTO eye\*.



\*Not for Sale in USA.

Carl Zeiss Meditec ▲ (877) 486-7473  
www.meditec.zeiss.com

Circle No. 78

## HUMPHREY MATRIX® AND FDT® VISUAL FIELD INSTRUMENTS

Featuring patented Frequency Doubling Technology, the Humphrey Matrix offers full threshold test strategies that localize and fully characterize visual field defects. STATPAC-like analysis provides doctors with familiar tools to make confident diagnoses. The FDT provides the eye care professional with a rapid (test times as fast as 35 seconds), clinically verified and affordable method of detecting visual field loss.

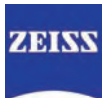


Carl Zeiss Meditec ▲ (877) 486-7473  
www.meditec.zeiss.com

Circle No. 79

## IOLMASTER® ADVANCED TECHNOLOGY SOFTWARE VERSION 5

After more than ten years of clinical experience, the IOLMaster is truly the Gold Standard in biometry. With the new software version 5, you can now measure eyes with dense opaque cataract. The enhanced keratometry is fast, user-friendly and reproducible. The latest software release (version 5.4) includes enhanced ACD measurements and the Haigis L formula for eyes which underwent myopic and hyperopic LVC.

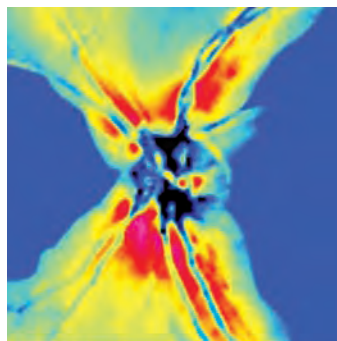


Carl Zeiss Meditec ▲ (877) 486-7473  
www.meditec.zeiss.com

Circle No. 80

## GDx™ SCANNING LASER POLARIMETER

This compact, but powerful glaucoma management tool provides sophisticated, in-depth retinal nerve fiber layer (RNFL) analysis, giving you confidence in both early diagnosis and tracking change. GDx also offers significant workflow advantages, including no dilation requirement, faster scan times and images that are quick and easy to explain to patients.



Carl Zeiss Meditec ▲ (877) 486-7473  
www.meditec.zeiss.com

Circle No. 81

## ATLAS® MODEL 9000 CORNEAL TOPOGRAPHY SYSTEM

Leveraging proven Placido disk technology, the next-generation ATLAS with PathFinder™ II Corneal Analysis Software is a compact, all-in-one system that provides unmatched accuracy and ease of use for anterior topographic screening. New SmartCapture™ Image Analysis Technology enhances clinical accuracy, and Zernike corneal wavefront analysis helps optimize aspheric IOL selection.



Carl Zeiss Meditec ▲ (877) 486-7473  
www.meditec.zeiss.com

Circle No. 82

## Spectra Plus The Compact & Portable Choice

The new Keeler Spectra Plus has some big features. The first portable, lightweight, and convenient indirect from Keeler that uses exclusive LED illumination. Our NEW Sport Frame for adds comfort and balance in four attractive colors, Sky Blue, Red, Dark Blue, and Black.



- LED long lasting bright illumination and better detail.
- No more bulbs to replace.
- Keeler Sport Frame, perfect comfort and balance
- Lithium Powered, up to 4 hours of continuous use.



Keeler

## Another Bright Idea From Keeler VantagePlus LED & Slimline

- Longest life – 10,000 hours, brightest, better detail.
- 25% brighter than standard bulbs.
- New Slimline battery, lightest and fits in your hand.
- Combined LED & Lithium Polymer battery can provide up to 6 hours of use on a single charge.



Be the envy of all your peers and ask for a **free, no obligation demonstration** of the New Vantage Plus LED and Slimline Wireless.



Keeler

Keeler Instruments, Inc. ▲ (800) 523-5620  
www.keelerusa.com

Circle No. 83

Keeler Instruments, Inc. ▲ (800) 523-5620  
www.keelerusa.com

Circle No. 84

## Perfect together SuperVu Hi-Res Loupe & K-L.E.D. Light System

Keeler introduces the First Hi-Resolution 3x Loupe and K-L.E.D Headlight.

3x Hi-Resolution loupe delivers 15% greater field of view & enhanced definition for better results!

The 3W K-L.E.D. light system provides a long lasting bright patch of illumination. Bright and long lasting LED illumination - no more bulbs to replace. Lithium powered, get up to 4 hours of continuous use.



Keeler

## Digital Imaging Anywhere! New VantagePlus Digital Ophthalmoscope

Keeler leads the way again with the first digital binocular indirect system. Not old analog video but true digital imaging.

The intuitive and powerful software allows you to use your laptop or any usb interface to optimize the examination, provide still or dynamic images, which aid in the documentation and diagnosis of your patient.

Increase your practice profile by educating your patients and their family with digital dynamic imaging in your office.



Keeler

Keeler Instruments, Inc. ▲ (800) 523-5620  
www.keelerusa.com

Circle No. 85

Keeler Instruments, Inc. ▲ (800) 523-5620  
www.keelerusa.com

Circle No. 86

## Work Smarter...Not Harder Pulsair EasyEye Non-Contact Tonometer

Pulsair EasyEye Non Contact Tonometry is the smart choice for all your patients. With exclusive soft-puff technology, space saver design, and clinically proven results – Pulsair makes your work easier!

- Soft-Puff, easy on your patients
- Priced Right, easy on your wallet
- Space Saver, easy on your office space.
- \$500 Smart Trade-In, just plain smart.



Keeler

## Keeler Cryomatic The Standard in Cryo-Surgery

The Keeler, CryoMatic is the first ophthalmic cryo-system with **cryosmart technology**. The console has a built-in monitoring system which self-adjusts the optimal operating parameters for any given probe. The CryoMatic offers the surgeon and his staff a system which performs time after time.

- Automatic Gas Adjustment, any probe will perform optimally.
- Fast Freeze and Defrost, for ease of use.
- No manual adjustments, easy set-up.
- Retinal End Freeze Probes.



Keeler

Keeler Instruments, Inc. ▲ (800) 523-5620  
www.keelerusa.com

Circle No. 87

Keeler Instruments, Inc. ▲ (800) 523-5620  
www.keelerusa.com


Circle No. 88

## integre.

Integrated, solid-state green laser.

- Elegant green laser in a unique integrated platform
- All-in-one slit lamp and laser delivery
- Adapter-free design
- Exquisite micromanipulator for precision control
- Unique wheelchair table provides smallest footprint



Ellex 800 824 7444 [ellex.com](http://ellex.com) 


Circle No. 89

## solitaire.

Versatile, portable solid-state green laser.

- Versatile: perfect for ALT, PI and retina treatment
- Dual ports offer increased fiber optic lifespan
- Patented energy control for consistent laser burns
- Premium slit lamp, LIO and endo probe delivery options
- Perfect solution for new ASC reimbursements



Ellex 800 824 7444 [ellex.com](http://ellex.com) 

Circle No. 90

## Only SteriLid® kills the bugs in 60 seconds

- Blepharitis • Dry eye • Pre-surgical patients

> 90% reduction in colony forming units (CFU) @ 60 seconds	Povidone iodine	Competitor <sup>2</sup>	Vehicle	SteriLid
Pseudomonas	X			X
Escherichia coli	X			X
MRSA				X
Staph aureus				X
Serratia marcescens	X			X
Staph epidermidis	X	X		X
Moraxella	X	X	X	X



<sup>1</sup> Independent lab test results on file. <sup>2</sup> OCuSOFT Lid Scrub PLUS is a registered trademark of OCuSOFT, Inc.

Advanced Vision Research ▲ (800) 979-8327  
[www.theratears.com](http://www.theratears.com)

Circle No. 91

## FASTEST, MOST ACCURATE AUTOREFRACTION AVAILABLE

The world famous Speedy family of autorefractors designed by NIKON are now available through Right Medical and authorized distributors everywhere. The Speedy-1 Autorefractor and the Speedy-K Autorefractor/keratometer combine speed, automation and user-friendly interface to significantly reduce testing time and provide accurate, reproducible measurements. Upgrade your pretest measurements with a Speedy Autorefractor today.



Circle No. 92

Right Medical ▲ (888) 224-6012  
[www.rightmedical.com](http://www.rightmedical.com)

## superq.

The essential YAG laser.

- Portable and affordable configuration
- Refined, patented YAG laser technology
- Low-energy, micro-precision control
- #1 selling YAG laser worldwide
- Industry-leading warranty



Ellex 800 824 7444 [ellex.com](http://ellex.com) 

Circle No. 93

## eyecubed

Premier diagnostic ultrasound.

- Unparalleled sensitivity and the highest-quality image resolution
- Real-time movie mode for B-Scan and Biometry A-Scan
- Sulcus-to-Sulcus measurements
- 160GB hard drive for image storage
- Flexible configuration



Ellex 800 824 7444 [ellex.com](http://ellex.com) 

Circle No. 94



## REICHERT ADVANTAGE™ CHAIR AND STAND

The Advantage chair and stand provides an economical, stable, and durable platform for effective lane organization. The modern ergonomic design assures easy access for both you and your patients. Features include a counterbalanced refractor arm and lower (slit lamp) arm, overhead lamp, and handheld instrument charging wells. Chair available in tilt or manual recline models.



Reichert, Inc. ▲ (888) 849-8955  
www.reichertoi.com

Circle No. 95

## MAXIMEYES PRACTICE MANAGEMENT AND EMR SOLUTIONS

Since 1994, maximEyes has helped thousands of eye care professionals improve office efficiencies, increase cash flow, and reduce accounts receivable time by keeping up with the latest trends and business needs. A true integrated system with customizable workflows, equipment integrations, 3D Precision Draw tool, and E&M Code Checker. Select accurate codes based on findings. Send regulatory-compliant e-prescriptions to pharmacies.



First Insight Corporation ▲ (800) 920-1940  
www.first-insight.com

Circle No. 96

## REICHERT ILLUMINATED PHOROPTOR® REFRACTING INSTRUMENT

The Illuminated Phoropter Refracting Instrument makes it easier to read the instrument dials in the darkened exam room setting. The Illuminated Phoropter features lighted sphere, cylinder power, and cylinder axis scales and a convenient brightness level control. Cool running, energy efficient LEDs light only what the doctor needs to see and are maintenance-free. PROUDLY MADE IN THE USA.



Reichert, Inc. ▲ (888) 849-8955  
www.reichertoi.com

Circle No. 97

## COMPLETE® MULTI-PURPOSE SOLUTION EASY RUB® FORMULA

Today's formula for ocular health. COMPLETE® MPS Easy Rub® Formula is leading the industry to healthier lens wear using a reliable rub and rinse regimen. Free lens case included.

- Promotes a healthier tear film and ocular surface.
- Gentle on epithelial cells—demonstrated to be less cytotoxic than other MPSs.
- 99.99% effective against standard FDA panel microorganisms when used as directed.
- Reliable disinfection under non-compliant conditions.
- Highly effective at removing harmful deposits.
- Promoting best practices in lens hygiene



Advanced Medical Optics ▲ (800) 821-1515  
www.yourhealthyeeyes.com

Circle No. 98

## OMEGA 500 BIO—AVAILABLE IN UNPLUGGED

The OMEGA 500 is the market leading BIO. Its patented small pupil function allows for stereoscopic, clear views through any pupil size. The Xenon Halogen Bulb creates a CRI Rating of 98.5, guaranteeing near perfect color rendering. The OMEGA 500 is available with a variety of power sources, including the UL-Approved UNPLUGGED allowing you to work anywhere without cords or cables.



Heine USA ▲ (800) 367-4872  
www.heine.com

Circle No. 99

## OMEGA 2C VIDEO BIO

The OMEGA 2C is the only BIO on the market that has been designed specifically for video use. It features specially designed optics, and a fully integrated camera system—ensuring an image of incomparable quality. Optics are mounted to an aluminum frame, and the housing is 100% dust-proof. The OMEGA 2C is now available with digital image capturing software.



Heine USA ▲ (800) 367-4872  
www.heine.com

Circle No. 100

# JOBSON PROFESSIONAL PUBLICATIONS GROUP



*Review of Optometry* delivers the growing vision care market by serving optometrists' practice and patient needs with clinical, practice management and market trend information. Continuing Education programs in print and online have also been a mainstay to *Review's* commitment to the profession.



*Review of Ophthalmology* is a monthly magazine focusing on clinical and practice management topics ranging from new technology, surgical techniques and therapeutics to laser and intra-ocular surgery. Timely information and research is presented by both staff and respected physicians.



*Review of Cornea & Contact Lenses* provides unique editorial coverage of contact lenses, clinical studies and lens care products, and offers selected clinical focus on the cornea and anterior segment in every issue. Our clinical features and practice management articles are written by leading professionals.

## CLEARCHART® DIGITAL ACUITY SYSTEM

Reichert's ClearChart Digital Acuity System is a comprehensive solution for all of your acuity chart needs. Featuring a high-contrast LCD screen and a sleek all-in-one design, the ClearChart does not require a PC or additional components. The remote control provides access to a wide range of optotypes and tests, and the characters can be easily randomized to reduce patient memorization. PROUDLY MADE IN THE USA.



Reichert, Inc. ▲ (888) 849-8955  
www.reichertoi.com

Circle No. 101

## REICHERT RK600 AUTOREFRACTOR/ KERATOMETER

The fast and accurate RK600 Autorefractor/Keratometer has a number of selectable automatic and manual measurement modes to suit user preference. The operating icons and results are clearly displayed on a color LCD monitor that superimposes the measurement data on a macro view of the patient's eye. It is compact, lightweight and incorporates a built-in printer for a hard copy of results.



Reichert, Inc. ▲ (888) 849-8955  
www.reichertoi.com

Circle No. 102

## THE NEW RETINOMAX 3 SERIES AUTOREFRACTORS—TABLE TOP ACCURACY WITH HAND-HELD FLEXIBILITY

With Hand-Held Flexibility, the Retinomax family of autorefractors are the new generation hand-held autorefractor with unsurpassed accuracy and ease-of-use, outperforming others to become the gold standard in hand-held autorefraction. Designed by NIKON, the Retinomax 3 is available through RIGHT Medical and authorized distributors everywhere. Number-one choice for pediatrics, home visits or between multiple offices. Expand your potential with the portability and flexibility of the Retinomax 3 Series.



Right Medical ▲ (888) 224-6012  
www.rightmedical.com

Circle No. 103

## OPTI-FREE® RepleniSH® MULTI-PURPOSE DISINFECTING SOLUTION

OPTI-FREE® RepleniSH® MPDS is a proprietary formula specially designed to recondition silicone hydrogel and soft contact lenses. Only OPTI-FREE® RepleniSH® has TearGlyde® Reconditioning System. It is proven to recondition lenses to retain moisture for enhanced comfort. The product also contains the POLYQUAD® and ALDOX® preservative system for biocompatible disinfection.



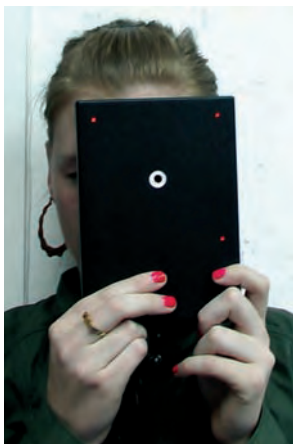
Why look further?™

Alcon Laboratories, Inc. ▲ (800) 451-EYES  
www.optifree.com

Circle No. 104

## AUTOMATED CONFRONTATION TEST FROM GULDEN

The Automated Confrontation Test is an automated LED gross confrontational visual field test. This cost effective and easy-to-use screener is fast (both eyes in less than a minute) and more accurate than using fingers. The clinician views the tested eye through the device to ensure fixation on the center while the patient responds to the automated, standardized presentation of random LED targets.



Gulden Ophthalmics ▲ (800) 659-2250  
www.guldenophthalmics.com

Circle No. 105

## AZOPT® SUSPENSION

When you need something extra in IOP-lowering, add or switch to AZOPT® suspension. Topical CAIs like AZOPT® have been shown to lower IOP better than beta-blockers or alpha-agonists when added to a PGA, with the added benefit of fewer side effects. AZOPT® provides the extra help you need to lower IOP in your glaucoma patients.



Alcon Laboratories, Inc. ▲ (800) 451-3937  
www.alconlabs.com

Circle No. 106

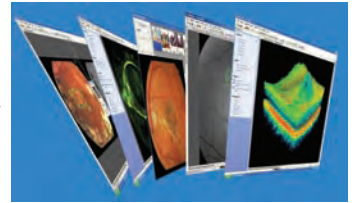
## TOPCON TRK-1P 4-IN-1 AUTO KERATO-REFRACTOR/TONOMETER/PACHY-METER

The new 4-in-1 TRK-1P combines an auto refractor, keratometer, non-contact tonometer and pachymeter all in a single instrument! This enables the instrument to provide four times the diagnostic capabilities in one-fourth the space, and at a fraction of the cost of the individual instruments. The TRK-1P eliminates the need to move the patient from instrument to instrument, thereby saving you time and increasing your practice's efficiency! All measurements are fully automated including auto alignment, auto shooting, auto right/left change and auto switch from kerato-refractor mode to tonometer mode. The TRK-1P also features a built-in printer and a 6.5" color monitor with a tilting mechanism.



## TOPCON IMAGENET™ DIGITAL IMAGING SOFTWARE

Recognized as the gold standard in digital fundus imaging, Topcon's IMAGENet offers easy-to-use, all-in-one systems approaches to ophthalmic photography. From entry-level digital capture to high-end state-of-the-art instruments, IMAGENet brings advanced fundus imaging to the next level. Topcon's Connecting Visions philosophy allows you to integrate your imaging products for increased office efficiency and enhanced patient care. Topcon offers the widest imaging product portfolio in the marketplace today, and will support your electronic capture requirements through our renowned commitment to advanced development and best-in-class distinction.



Topcon Medical Systems ▲ (800) 223-1130  
www.topconmedical.com

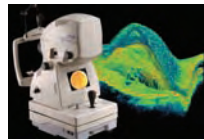
Circle No. 107

Topcon Medical Systems ▲ (800) 223-1130  
www.topconmedical.com

Circle No. 108

## TOPCON 3D OCT-1000 OPTICAL COHERENCE TOMOGRAPHER

The 3D OCT-1000 combines the latest Fourier Domain OCT technology with a non-mydratric fundus camera to offer the world's most versatile retinal evaluation tool. This revolutionary product provides you with a true three-dimensional view of the targeted area of the retina, featuring Topcon's TrueMap™ Software. Incorporated in the software is Topcon's Pin-Point™ Registration that provides accurate scan locations for reliable and reproducible results. By employing the latest Fourier Domain technology, the 3D OCT-1000 offers a dramatic increase in both scanning speed and image sensitivity. The 3D OCT-1000's software allows you to import fundus images from other instruments and view, edit and interpret 3D OCT data as well as B-scan images. It can also interface with Topcon's IMAGENet™ and EyeRoute® software, providing seamless integration with your other imaging procedures.



## TOPCON EYEROUTE® OPTHALMIC IMAGE MANAGEMENT SYSTEM

EyeRoute® is an easy-to-use, point-and-click image management system that captures information from most ophthalmic instruments into a single database. Users can easily access patient images through a standard web browser from anywhere in their office or in the world, including an iPhone® or other handheld device. A new interface allows for the dynamic viewing of 3D images. EyeRoute® supports over 20 different types of ophthalmic instruments from more than 10 different manufacturers including OCT, fundus cameras, ultrasound capture systems, digital slit lamps, visual fields, IOL Master®, GDX® and many more.



Topcon Medical Systems ▲ (800) 223-1130  
www.topconmedical.com

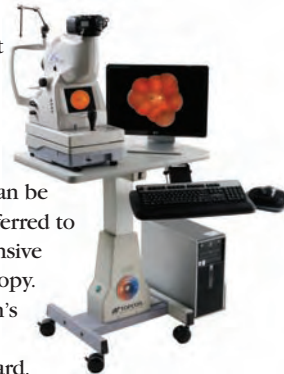
Circle No. 109

Topcon Medical Systems ▲ (800) 223-1130  
www.topconmedical.com

Circle No. 110

## TOPCON TRC-NW8 TELEMEDICINE SYSTEM

The Topcon TRC-NW8 Telemedicine System combines IMAGENet™ Lite, the recognized standard in fundus imaging telemedicine software, with the new Topcon TRC-NW8 Automated Non-Mydratric Retinal Camera. The system features the latest Nikon™ digital camera attachment for superb resolution (currently 10.2 megapixels), enabling you to perform highly accurate color and red-free digital retinopathy screenings within an easy-to-use platform. Captured images can be stored for comparison, e-mailed or transferred to a central patient database for comprehensive study and/or directly printed as a hard copy. The system comes standard with Topcon's AutoMosaic software for creating composite images and EyeRoute® OnBoard.



## TOPCON CV-5000 VISION TESTER

The CV-5000 Automated Vision Tester from Topcon features a small optical head and a large color touch screen controller, as well as a high-speed lens chamber, making refractions fast, easy and comfortable. The redesigned KB-50 controller allows you to control the refraction process, demonstrate the benefit of a variety of lenses to your patients and educate them on their vision using a high-resolution touch screen color LCD. The CV-5000 can be connected to Topcon's EXAM-5000, a complete state-of-the-art ergonomic refraction system. It is also compatible with today's electronic medical record systems (EMRs) for a true paperless solution.



Topcon Medical Systems ▲ (800) 223-1130  
www.topconmedical.com

Circle No. 111

Topcon Medical Systems ▲ (800) 223-1130  
www.topconmedical.com

Circle No. 112

### MP-1—OPTIMAL REHABILITATION FOR AMD

- Includes a differential mapping function and provides exam replication for assessment of changes in retinal sensitivity
- Offers the ability to create perimetry patterns customized to the needs of your practice or clinical trial
- Perimetry and fixation data are plotted over a color fundus photo
- Biofeedback system with fixation therapy for low-vision patients



NIDEK ▲ (800) 223-9044  
www.usa.nidek.com

Circle No. 113

### MAGELLAN MAPPER—FIRST PLUG AND PLAY CORNEAL TOPOGRAPHER

- Small diameter, sharp-angle, 30-ring projector for enhanced ring quality on the cornea
- Dual-edge ring finder with 60 detectable rings
- 21,600 data points
- High-resolution camera (768 x 576 pixels)
- Single, multiple and 3D map displays
- Axial, tangential, refractive and height algorithms
- Absolute, standard, adjustable and normalized scales

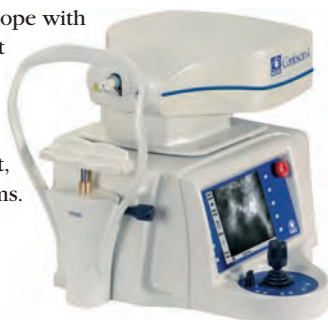


NIDEK ▲ (800) 223-9044  
www.usa.nidek.com

Circle No. 114

### CS4—CORNEAL DIAGNOSTICS LIKE NO OTHER

- Corneal Microscope with 40X Probe—Gel-immersion exams as quick as just 15 seconds, real-time in-vivo histology, full cornea/endothelium/epithelium scans, and multiple internal fixation mires.
- Non-contact Endothelial Microscope with 20X Probe—Wider measurement area (up to 1000 cells/exam), 12mm working distance in air, automatic cell count and endothelial density measurement, and increased reimbursable exams.



NIDEK ▲ (800) 223-9044  
www.usa.nidek.com

Circle No. 115

### AFC—TRY THE MOST AUTOMATED FUNDUS CAMERA AVAILABLE

- The only fundus camera with 3D alignment and tracking, AutoFocus and AutoShot
- Automatic separation for repeatable glaucoma analysis in stereo
- Allows both internal and external imaging at a resolution of 12.8 megapixels
- True 45° images (without cropping) for a more complete diagnostic screening



NIDEK ▲ (800) 223-9044  
www.usa.nidek.com

Circle No. 116

### OPD SCAN II—DISCOVER THE DIFFERENCE

- OPD Map shows point-by-point eye aberration
- Single-step measurement of corneal topography and refractive error data for reduced alignment errors
- Selectable measurement data for improved reliability
- Fully automated alignment of the XYZ axis
- Wide measurement range (Sphere -20.0D to +22.0D and Cylinder 0.0D to ±12.0D)
- Networkable

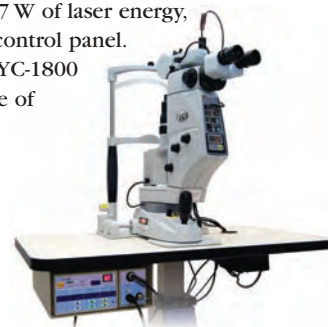


NIDEK ▲ (800) 223-9044  
www.usa.nidek.com

Circle No. 117

### YAG/GREEN COMBO LASER—MOST POPULAR COMBINATION SYSTEM

- The YC-1800 is designed to reduce laser lens reflections while maintaining laser-beam integrity.
- The GYC-1000 is a compact green laser and offers solid-state technology for extended life, 1.7 W of laser energy, and a user-friendly, detachable control panel.
- Easy connectivity between the YC-1800 and GYC-1000 for a wider range of treatment options.



NIDEK ▲ (800) 223-9044  
www.usa.nidek.com

Circle No. 118

## HUVITZ HRK-7000A WAVE FRONT REFRACTION

Based on the Hartmann-Shack principle, the HRK-7000A focuses on measuring second-order aberrations and combines the features of an auto refractor, auto keratometer and an aberrometer into one convenient-to-use instrument. Features include:

- Wavefront Maps
- Motorized Elevation Control
- Auto Alignment
- Residual Astigmatism
- Peripheral Keratometry.



**Veatch Instruments ▲ (800) 447-7511**  
[www.veatchinstruments.com](http://www.veatchinstruments.com)

Circle No. 119

## HUVITZ HDR-7000 DIGITAL REFRACTOR

Building upon the success of the Huvitz line, the redesigned HDR-7000 incorporates a sleek new look and adds the latest technology. Speed up the refraction process to increase efficiency, reduce fatigue and enhance revenues.

- Compact, Slim Design
- Quiet, High Speed Motors
- 40 Degree Visual Field
- Illumination for Near Point chart
- Auto Detect Vertex Distance
- Touch Pad Control Panel
- Tilt-Swivel Color LCD Display
- Multiple System Configuration
- Sirius Visual Acuity System
- Easy to Upgrade.



**Veatch Instruments ▲ (800) 447-7511**  
[www.veatchinstruments.com](http://www.veatchinstruments.com)

Circle No. 120

## HUVITZ HLM-7000 AUTOLENSMETER

The slim, trendy HLM-7000 offers an adjustable tilting LCD monitor for easy viewing. Enhanced design makes it easy to take reading on small frames. Progressive lenses are a snap to read due to the advanced algorithm, which systematically locks on the accurate power. The wide power range of +25 to -25 diopters and 10 prism diopters is one of the highest in the industry.

- Adjustable Tilting LCD Display
- Quick and Easy Measurement
- Easily Reads Small Frames
- Systematically Detects Progressive Lenses
- Measurement of UV Protection (0-100%)
- Lens Marking pens
- Wide +25 to -25 Power Range.



**Veatch Instruments ▲ (800) 447-7511**  
[www.veatchinstruments.com](http://www.veatchinstruments.com)

Circle No. 121

## RESEEVIT™ 6.0 THE TOTAL SOLUTION™

ReSeeVit™ 6.0 is the most complete digital imaging software on the market. Integrated, scalable and designed to grow with your practice. Combined into one easy-to-use database:

- Anterior segment imaging
- Retinal imaging
- Wavefront Topography.



**Veatch Instruments ▲ (800) 447-7511**  
[www.veatchinstruments.com](http://www.veatchinstruments.com)

Circle No. 122

## SIRIUS VISUAL ACUITY SYSTEM

The Sirius Visual Acuity System offers a complete set of visual acuity tests in one easy-to-use product. Choose from a wide range of acuity tests that can be randomized to prevent memorization and improve acuity testing accuracy. All optotypes may be displayed as:

- Single character mode
- Contrast sensitivity
- Single line modes (horizontal and vertical)
- Multi line mode
- Customized videos
- Customized images.



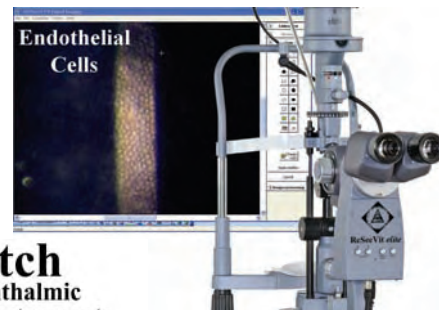
**Veatch Instruments ▲ (800) 447-7511**  
[www.veatchinstruments.com](http://www.veatchinstruments.com)

Circle No. 123

## RESEEVIT™ elite DIGITAL IMAGING

Our highest quality system is designed to perform to the most demanding practitioner specifications. Truly "a work of art," the elite is unmatched for image quality and performance.

- 4.0 Effective Meg
- Ergonomic camera-mounted controls
- Streaming video
- Endothelium cells.



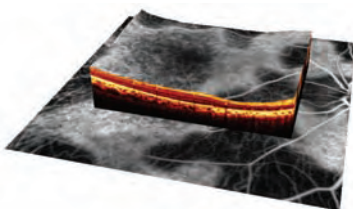
**Veatch Instruments ▲ (800) 447-7511**  
[www.veatchinstruments.com](http://www.veatchinstruments.com)

Circle No. 124

## SPECTRALIS® FAMILY

SPECTRALIS combines the best of Spectral-Domain OCT, confocal scanning lasers and fundus imaging to provide a comprehensive, all-in-one retinal solution. The SPECTRALIS family includes five different models, at five different price points, to meet individual practice needs.

- Up to six imaging modes
- TruTrack™ Eye Tracking
- Automatic rescan placement
- 3-micron smallest measurable change
- Heidelberg Noise Reduction™
- Network ready



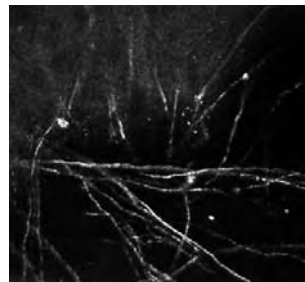
ICGA+OCT Serpiginous Choroidopathy

**HEIDELBERG  
ENGINEERING**

## HRT ROSTOCK CORNEA MODULE

The Rostock Cornea Module adds confocal laser microscopy to the HRT system enabling the capture and review of minute details of the cornea's cellular structure, from epithelium to endothelium.

- Facilitates *in vivo* histology and assessment of *Fusarium*, *Acanthamoeba* and other infections
- Offers endothelial cell count analysis



*Fusarium*

**HEIDELBERG  
ENGINEERING**

Heidelberg Engineering ▲ (800) 931-2230  
www.HeidelbergEngineering.com

Circle No. 125

Heidelberg Engineering ▲ (800) 931-2230  
www.HeidelbergEngineering.com

Circle No. 126

Eye vitamin & mineral supplement with  
**fish oil omega-3s**  
**vitamin D**  
**green tea extract**

**MacuTrition®**  
vision & health™

Protects against oxidation  
Protects against inflammation  
Protects against neo-vascularization

Advanced Vision Research ▲ (800) 979-8327  
www.macutrition.com

Circle No. 127

## QuantifEYE®

Low macular pigment optical density (MPOD) presents a high-risk factor for AMD. With the QuantifEYE device you can now measure your patient's MPOD quickly and easily.

- AMD Risk Management Program
- Latest in state-of-the-art technology
- Small footprint, easily operated, requires no dilation
- Measurable changes in macular protective pigment can be demonstrated within six months when used in concert with the professional dietary supplement, EyePromise® Restore



Circle No. 128

ZeaVision, LLC ▲ (866) 833-2800  
www.zeavision.com ▲ bley@zeavision.com

## SPECTRALIS® OCT WITH TRUTRACK™

At 40,000 A-scans/second, SPECTRALIS Spectral-Domain OCT scans 100 times faster than time-domain OCT. Proprietary eye tracking enables precise repeat scanning and noise filtration.

Imaging Modes: Spectral-Domain OCT and Infrared

Other Features:  
Network ready and automatic rescan



IR+OCT Macular Hole

**HEIDELBERG  
ENGINEERING**

Heidelberg Engineering ▲ (800) 931-2230  
www.HeidelbergEngineering.com

Circle No. 129

## VARITRONICS Autoswitch Control Systems:



Varitronics Ophthalmic Control Systems will control your room and fixation lighting automatically and put your instruments at your fingertips. In-cabinet and desktop models available. ETL Approved.

Circle No. 130

Varitronics ▲ (800) 345-1244  
www.varitronics.com

## NEW STEREOPSIS TESTS

NEW Features Include:

- Expanded Graded Circle Test from 400 Sec NOW DOWN TO 20 sec
- New Technology which Eliminates Monocular Clues
- Answer Key Now Integrated on Test Booklet Cover
- Lea Symbols, the Most Internationally Recognized Symbols for Testing Children
- BOTH Adult & Pediatric Polarized Viewers Included
- Durable Booklet
- NEW Low Price.



Vision Assessment Corp. ▲ (866) 887-9692  
www.visionassessment.com

Circle No. 131

## VISUPAC STAR™ CONNECTIVITY SOLUTION

VISUPAC Star software makes it easy and efficient to view structural and functional test data side-by-side in the exam lane. New DICOM Gateway feature offering bidirectional workflow to/from ZEISS instruments minimizes filing errors and maximizes practice efficiency.



Carl Zeiss Meditec ▲ (877) 486-7473  
www.meditec.zeiss.com

Circle No. 132

## MANUAL CHART PROJECTOR SLIDES

- Available in Standard & Vectographic
- Choose from 16 Different Slides
- Letters, Numbers & Landolt C
- Tumbling E, Allen & Lea Symbols®
- For Use in 10- or 20-foot lane.



Vision Assessment Corp. ▲ (866) 887-9692  
www.visionassessment.com

Circle No. 133

## ZEISS VISULAS LASERS

Trion is a multicolor laser that offers superior power and stability at yellow, green and red wavelengths. YAG III allows treatment with 40% less energy for reduced side-effects, and the 532s' fully integrated laser slit lamp offers superior visualization and high-precision laser control. The 690s PDT laser delivers optimal treatment for AMD, and the Combi offers the total laser solution with its compact YAG and 532s workstation.



Carl Zeiss Meditec ▲ (877) 486-7473  
www.meditec.zeiss.com

Circle No. 134

## RANDOM DOT E DEPTH PERCEPTION TEST

Designed to Test for Amblyopia & Strabismus in Early & Non-readers and Non-verbal Children & Adults

NEW Features Include:

- New Improved Test Frames
- More Uniform Dot Pattern
- BOTH Adult & Pediatric Polarized Viewers Included.



Vision Assessment Corp. ▲ (866) 887-9692  
www.visionassessment.com

Circle No. 135

## NEW VISION THERAPY SYSTEM

Choose from three New Polarized Variable Vectographs

Features Include:

- Gem
- Vortex
- Gem PL
- Therapy Binder
- Doctor and Patient Manuals
- Therapy Record Form
- Polarized Viewers



Vision Assessment Corp. ▲ (866) 887-9692  
www.visionassessment.com

Circle No. 136



## H-R WIDE FIELD LENS

Unmatched Views to the Ora—  
the new H-R Wide Field contact lens.

- Super-wide field, distortion-free imaging to the ora
- Small profile lens for easy manipulation even within deep orbits
- Superb upgrade from your old PRP or Rodenstock pan fundus lens

**H-R Wide Field—**  
the new standard for pan retinal diagnosis and PRP treatment.



Volk Optical Inc. ▲ (800) 345-8655  
www.volk.com

Circle No. 137

## HIGH MAG 4 MIRROR GONIO LENS

Finest anterior chamber angle details—  
the new High Mag 4 mirror Gonio lens.



- Highest magnification (1.5x) of any four-mirror Gonio lens
- Available in small or large ring options or two-position handle
- Contact options include our no-flange design (interface solution not required) or flanged design for superior eye stability

**G4 High Mag—**  
the new standard for Gonioscopy



Volk Optical Inc. ▲ (800) 345-8655  
www.volk.com

Circle No. 138

## IQ 810™ LASER FROM IRIDEX

The IQ 810™ laser is a state-of-the-art laser system offered by IRIDEX. With an innovative combination of power and versatility, this next-generation platform is designed to perform MicroPulse Laser Trabeculoplasty (MLT) for the management of glaucoma. MLT is tissue-sparing technology used to deliver energy below levels of standard photocoagulation, confining heat to the target area. The IQ 810 laser with MicroPulse technology offers flexibility and performance previously unavailable.



IRIDEX Corp. ▲ (800) 388-4747  
www.iridex.com

Circle No. 139

## IQ 577™ LASER BY IRIDEX

The IQ 577™ is a top-of-the-line retina laser system, with IRIDEX MicroPulse™ technology and 577 nm yellow light from a solid-state laser. The true yellow, 577 nm wavelength provides precision and outstanding performance while offering an intelligent design in an intuitive, advanced platform.



IRIDEX Corp. ▲ (800) 388-4747  
www.iridex.com

Circle No. 140

## EYE DESIGNS CUSTOM INTERIORS & FURNITURE

- OFFICE DESIGN
- INTERIOR DESIGN
- OPTICAL FURNISHINGS
- VERSA DISPLAY SYSTEM
- EXAM CONSOLES
- ACCESSORIES
- DELIVERY & INSTALLATION
- ON-SITE CONSULTATIONS

Contact EYE DESIGNS  
220 West Fifth Avenue  
Collegeville, PA 19426



Eye Designs ▲ (800) 346-8890  
www.eyedesigns.com

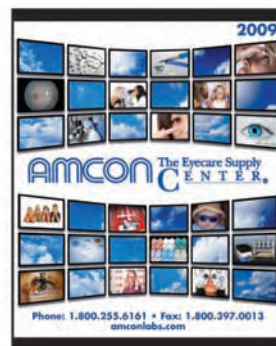
Circle No. 141

Call today for your **FREE** copy of  
*Amcon's 2009 Product Catalog.*

Surgical & Laser Vision Supplies  
Examination & Lab Equipment  
Pharmaceuticals & Diagnostics  
Ophthalmic Bulbs & Batteries  
Optical Hand & Bench Tools  
Nose Pads, Screws and Temple Tips  
Low-Vision Aids  
Optical Accessories

*An invaluable resource for today's  
optical industry professionals.*

Toll Free: 1 (800) 255-6161  
Fax: 1 (800) 397-0013  
amconlabs.com



**AMCON**  
The Eyecare Supply  
CENTER.

Amcon Labs ▲ (800) 255-6161  
www.amconlabs.com

Circle No. 142

## Telephone Index

### Accutome

(800) 979-2020  
Circle No. 143, 145, 151

### Advanced Medical Optics, Inc.

(800) 821-1515  
Circle No. 30, 98

### Advanced Vision Research

(800) 979-8327  
Circle No. 91, 127

### Alcon Laboratories, Inc.

(800) 451-3937  
Circle No. 51, 104, 106

### Allergan, Inc.

(800) 433-8871  
Circle No. 1

### Amcon Labs

(800) 255-6161  
Circle No. 142

### Angiotech

(866) 823-6543  
Circle No. 37

### Bausch & Lomb Incorporated

(800) 323-0000  
Circle No. 24, 74

### BD Medical

(781) 906-6926  
Circle No. 6

### Carl Zeiss Meditec

(877) 486-7473  
Circle No. 4, 19, 31, 32,  
77, 78, 79, 80, 81, 82, 132,  
134, 150, 154

### CBD/Tomey

(888) 449-4045  
Circle No. 69, 70

### Comlite

(800) 426-5271  
Circle No. 10

### CYNACON/OCuSOFT

(800) 233-5469  
Circle No. 29, 47, 73

### DGH Technology, Inc.

(800) 722-3883  
Circle No. 34

### Ellex

(800) 824-7444  
Circle No. 89, 90, 93, 94

### Eye Designs

(800) 346-8890  
Circle No. 141

### EyeQuip

(800) 393-8676  
Circle No. 18

### FCI Ophthalmics

(800) 932-4202  
Circle No. 33

### First Insight Corporation

(800) 920-1940  
Circle No. 96

### Gulden Ophthalmics

(800) 659-2250  
Circle No. 105

### Haag-Streit

(800) 787-5426  
Circle No. 54, 56, 58, 59,  
60, 61, 62, 63, 64

### Heidelberg Engineering

(800) 931-2230  
Circle No. 3, 5, 125, 126, 129

### Heine USA

(800) 367-4872  
Circle No. 99, 100

### Hydrogel Vision Corporation

(877) 336-2482  
Circle No. 9

### Inspire

(877) 800-4536  
Circle No. 42

### IRIDEX Corp.

(800) 388-4747  
Circle No. 139, 140

### Keeler Instruments, Inc.

(800) 523-5620  
Circle No. 2, 83, 84, 85,  
86, 87, 88

### Kowa Optimed, Inc.

(310) 327-1913  
Circle No. 25, 26

### M&S Technologies, Inc.

(877) 225-6101  
Circle No. 148

### Marco

(800) 874-5274  
Circle No. 20, 39, 41, 45,  
72, 144

### Metro Optics

(800) 223-1858  
Circle No. 21, 27

### Natural Ophthalmics, Inc.

(877) 220-9710  
Circle No. 36, 38, 40

### New World Medical, Inc.

(909) 466-4304  
Circle No. 43

### NIDEK

(800) 223-9044  
Circle No. 113, 114, 115,  
116, 117, 118

### OASIS Medical, Inc.

(800) 631-7180  
Circle No. 7, 50

### Odyssey

(888) 905-7770  
Circle No. 23

### OmegaEye Health, LLC

(888) 820-5433  
Circle No. 8

### Optos

(800) 854-3039  
Circle No. 48, 152

### Optovue, Inc.

(866) 344-8948  
Circle No. 22

### Reichert, Inc.

(888) 849-8955  
Circle No. 46, 49, 95, 97,  
101, 102, 146, 149

### Reliance Medical Products

(800) 735-0357  
Circle No. 53, 55, 57

### Right Medical

(888) 224-6012  
Circle No. 28, 44, 92, 103

### Sightpath Medical

(800) 728-9615  
Circle No. 52

### Stereo Optical

(800) 344-9500  
Circle No. 11, 12, 13, 14,  
15, 16, 17, 153

### Synemed

(800) 777-0650  
Circle No. 75, 76

### Synthetic Optics, Inc.

(201) 847-0007  
Circle No. 71

### TelScreen

(800) 769-4933  
Circle No. 35

### Tomey

(888) 449-4045  
Circle No. 65, 66, 67, 68

### Topcon Medical Systems

(800) 223-1130  
Circle No. 107, 108, 109,  
110, 111, 112

### Varitronics

(800) 345-1244  
Circle No. 130

### Veatch Instruments

(800) 447-7511  
Circle No. 119, 120, 121,  
122, 123, 124

### Vision Assessment Corp.

(866) 887-9692  
Circle No. 131, 133, 135, 136

### Volk Optical Inc.

(800) 345-8655  
Circle No. 137, 138

### ZeaVision, LLC

(866) 833-2800  
Circle No. 128

## ACCUTOME B-SCAN PLUS

- Image is Everything—0.015 mm Resolution is the Highest in the Medical Industry.
- State-of-the-Art Probe Design—Sharper, more Focused Images due to the Elimination of Signal Loss.
- “Smooth Zoom” Technology—The only unit with 2x full image zoom without distortion of real-time or captured scans.
- Portable—Plug Probe into any Laptop or PC and Go.
- Never Miss an Image—Unlimited 34 Second Film Loops.
- Creates Reports in Seconds—Built in Report Template Containing Image, Diagnosis, Patient and Facility Information.
- Share Information Easily—Adaptable Document Transfer via Paperless Office, Email or Printer.
- Compact File Storage—Unsurpassed by the Competition.
- Protect Your Investment—Easily Upgradeable Software.
- Master in Minutes—User-friendly Interface makes the Complex Easy.



Accutome ▲ (800) 979-2020  
www.accutome.com

Circle No. 143

## DIGITAL IMAGING

Two anterior segment imaging systems from Marco efficiently capture and archive high-quality digital images. The integrated idoc® system is a small, compact unit that captures and stores still digital images, as well as live-streaming videos. The SnapShot® system captures and stores images from a high-resolution digital SLR camera. Each system conveniently mounts to any new or existing Marco Ultra Series Slit Lamp.



**MARCO**  
THE LEADER IN VISION DIAGNOSTICS®

Marco ▲ (800) 874-5274  
www.marco.com

Circle No. 144

## ACCUTOME RX

Accutome Rx is a full service ophthalmic company offering diagnostic and surgical products. We offer fast and friendly service with no minimums. Call today for our specials.



Accutome ▲ (800) 979-2020  
www.accutome.com

Circle No. 145

## REICHERT INTRODUCES NEW REICHERT-7™ AUTO TONOMETER

Reichert is proud to announce the introduction of our seventh generation non-contact tonometer, Reichert 7. Reichert 7 features an all-new, easy-to-use, touch-screen icon-based user interface, fully automated alignment and measurement, and a unique one-touch triple-measurement mode. The instrument is fast, easy and comfortable for both the operator and the patient.



PROUDLY MADE IN THE USA.

Reichert, Inc. ▲ (888) 849-8955  
www.reichertoi.com

Circle No. 146

## TETRAVISC™—THE ORIGINAL TOPICAL ANESTHETIC GEL

TetraVisc™, is now offered in 0.6 mL Unit-Dose bottles. TetraVisc™ provides a longer anesthetization time than traditional ophthalmic anesthetic solutions and significantly improves pain levels in post operative patients. Additionally, TetraVisc™ also offers a number of advantages over anesthetic jelly (commonly used off-label for a number of years in cataract surgery) including: rapid and immediate dispersion across the cornea and a controlled tip drop.



CYNACON/OCUSOFT ▲ (800) 233-5469  
www.ocusoft.com

Circle No. 147

## SMART SYSTEM 2020™

Offers Cutting Edge Integration of Computerized Vision Testing with Auto-phoroptors, EMR and Patient Education

Leader in computerized visual acuity, contrast sensitivity and video display systems. Visual acuity tests, fully randomizable and customizable, letter/linear sine gratings for contrast testing, E-ETDRS/ATS certified for clinical trials and user-friendly operation of patient education and EMR software.

- System Link™ – simultaneously operate Smart System™ with other software packages on same computer
- Seamless integration with Marco and Topcon auto-phoroptors, Eyemaginations™ and OfficeMate™ EMR
- Industry Exclusive – Lea Symbols™
- Includes the advanced Smart System™ 2008 software and a 20" Monitor-Standard

Meets or Exceeds ANSI/ISO standards



**M&S** TECHNOLOGIES  
The First Choice in Vision Testing Systems

**EYEMAGINATIONS**

M&S Technologies, Inc. ▲ (877) 225-6101  
www.mstech-eyes.com

Circle No. 148

## REICHERT TONO-PEN AVIA® APPLANATION TONOMETER

The TONO-PEN AVIA Applanation Tonometer features an ergonomic design, long-lasting battery (over 2,500 measurements) and advanced electronic technology that enables fast and accurate IOP measurements with minimal training. Daily calibration is not required and the instrument is easy and comfortable for both the operator and the patient. Results are clearly displayed on dual LCD screens.

PROUDLY MADE IN THE USA.



Reichert, Inc. ▲ (800) TONO-PEN  
www.TonoPenAVIA.com

Circle No. 149

## VISANTE® OCT ANTERIOR SEGMENT IMAGING & CORNEAL TOPOGRAPHY

Visante OCT Topography Link integrates anterior corneal topography from the ATLAS® Corneal Topographer with highly accurate biometry from the Visante OCT, resulting in anterior and posterior corneal topography by combining superior anterior segment imaging. The Holladay Report packages the results in a easy-to-read format to streamline decision making and improve practice efficiency.



Carl Zeiss Meditec ▲ (877) 486-7473  
www.meditec.zeiss.com

Circle No. 150

## ACCUTOME ACCUPEN®

Accutome is pleased to introduce the new AccuPen handheld applanation tonometer. The AccuPen's ergonomic design and proprietary technology allow for fast and accurate IOP measurements. The user-friendly interface can be mastered in seconds. Less calibration is required when compared to other handheld applanation tonometers. A built-in IOP Correction Calculator allows the user to enter corneal thickness to adjust the IOP. The AccuPen is powered by a lithium battery which can be used for over 5,000 readings. Please call for the introductory special price.



Accutome ▲ (800) 979-2020  
www.accutome.com

Circle No. 151

## THE OPTOS P200MA OPHTHALMIC IMAGING SYSTEM

The Optos P200MA Ophthalmic Imaging System, featuring the **optomap® fa** Angiography Procedure, digitally captures ultra-widefield, ultra-high resolution images and provides:

- The first non-contact widefield imaging system
- A 200° field of the retina in a single image, enabling simultaneous pole and peripheral view of the retina
- Color, red-free and FA imaging
- Practitioners with support in diagnosing ocular pathology that may first present in the periphery of the retina.



Optos ▲ (800) 854-3039  
www.optos.com

Circle No. 152

## NEW OPTEC® 5000 SERIES VISION TESTERS

### New Features Include:

- New modern design
- The only vision tester that meets all vision testing standards worldwide
- L.E.D. lighting system lasting 100,000 hours

### Proven features still include:

- Test near and distance acuities of multifocal lens patients utilizing ergonomically correct positioning
- Meet testing protocols of most vision care plans
- Accurately test ages 2 through adult
- The only vision tester that offers customized test sequences



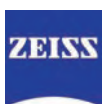
STEREO OPTICAL

Stereo Optical ▲ (800) 344-9500  
www.stereoptical.com

Circle No. 153

## ZEISS SLIT LAMPS

SL115 Classic Slit Lamp offers comfort and easy setup. SL120 features a wider 125-degree stereo angle, increased slit length and width, and a wider base for greater travel range. SL130 offers unsurpassed optical features of SL120 with an exclusive selection of versatile add-ons.



Carl Zeiss Meditec ▲ (877) 486-7473  
www.meditec.zeiss.com

Circle No. 154