

RCCL®

REVIEW OF CORNEA
& CONTACT LENSES

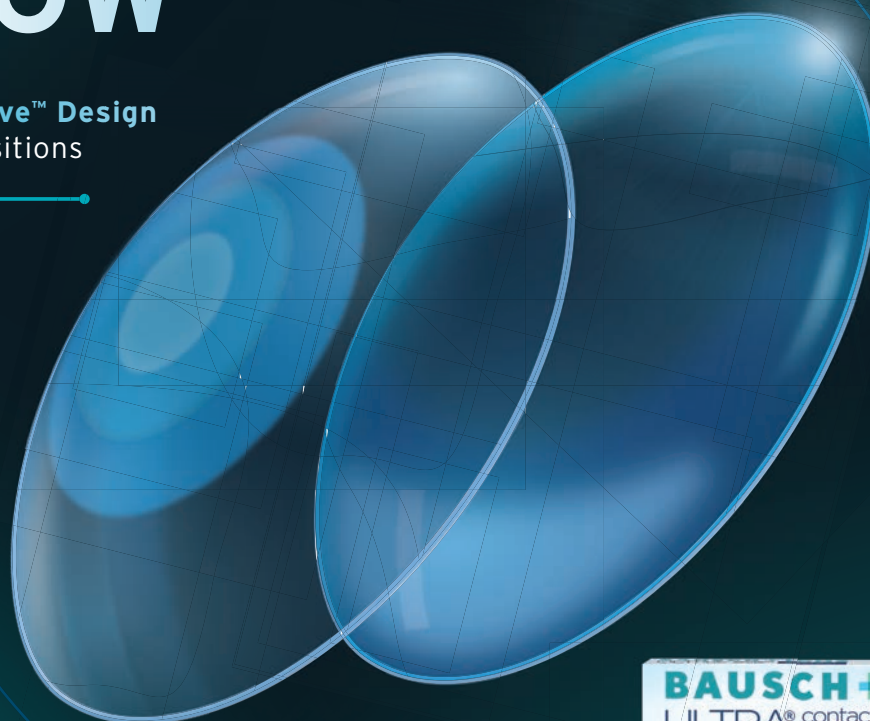
Annual Contact Lenses and Lens Care Guide

BAUSCH + LOMB ULTRA® MULTIFOCAL FOR ASTIGMATISM

THE TIME IS NOW

3-Zone Progressive™ Design
for seamless transitions

For the first time ever, you can offer
your patients the only multifocal toric
lens available with same-day fitting.



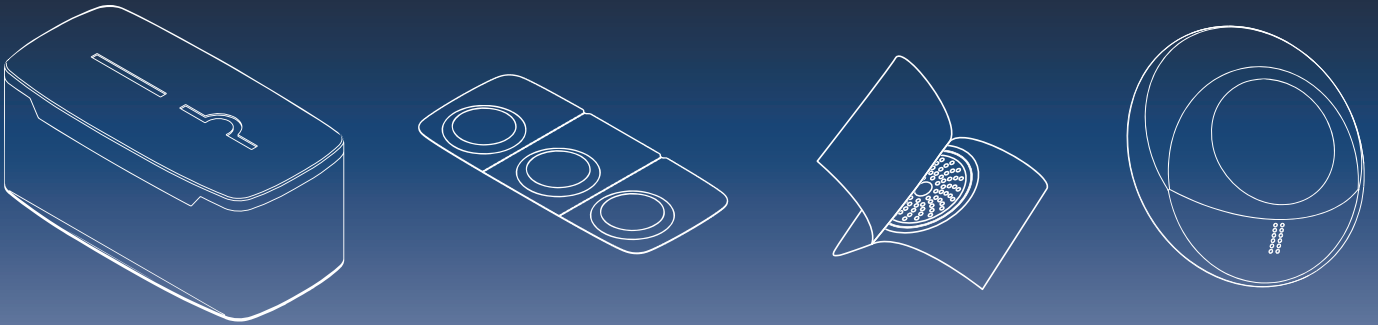
OpticAlign® Design
for reliable stability



®/™ are trademarks of Bausch & Lomb Incorporated or its affiliates.
©2019 Bausch & Lomb Incorporated or its affiliates. UMT.0174.USA.19

BAUSCH + LOMB
See better. Live better.

Now Available!



EASY, CLEAN, PORTABLE.

A Unique Approach to Daily Disposable Soft Toric Lenses

The 1day Miru Toric flat pack is designed using SmartTouch™ Technology which minimizes lens handling and contamination concerns so contact lenses can be worn more comfortably and hygienically.

1day Miru toric employs a unique Smart Fit™ design that naturally orients the lens correctly no matter which way it is inserted.

For a trial pair, please email information@menicon.com



Miru 
1day Menicon Flat Pack

EDITORIAL STAFF

EDITOR-IN-CHIEF

Jack Persico jpersico@jobson.com

MANAGING EDITOR

Rebecca Hepp rhepp@jobson.com

ASSOCIATE EDITOR

Catherine Manthorp cmanthorp@jobson.com

ASSOCIATE EDITOR

Mark De Leon mdeleon@jobson.com

CLINICAL EDITOR

Joseph P. Shovlin, OD, jpshovlin@gmail.com

ASSOCIATE CLINICAL EDITOR

Christine W. Sindt, OD, christine-sindt@uiowa.edu

EXECUTIVE EDITOR

Arthur B. Epstein, OD, artepstein@artepstein.com

CONSULTING EDITOR

Milton M. Horn, OD, eyemage@mminternet.com

GRAPHIC DESIGNER

Ashley Schmouder aschmouder@jobson.com

AD PRODUCTION MANAGER

Scott Tobin stobin@jhihealth.com

BUSINESS STAFF

PUBLISHER

James Henne jhenne@jobson.com

REGIONAL SALES MANAGER

Michele Barrett mbarrett@jobson.com

REGIONAL SALES MANAGER

Michael Hoster mhoster@jobson.com

VICE PRESIDENT, OPERATIONS

Casey Foster cfoster@jobson.com

EXECUTIVE STAFF

CEO, INFORMATION SERVICES GROUP

Marc Ferrara mferrara@jhihealth.com

SENIOR VICE PRESIDENT, OPERATIONS

Jeff Levitz jlevitz@jhihealth.com

**SENIOR VICE PRESIDENT,
HUMAN RESOURCES**

Tammy Garcia tgarcia@jhihealth.com

**VICE PRESIDENT,
CREATIVE SERVICES & PRODUCTION**

Monica Tettamanzi mtettamanzi@jhihealth.com

VICE PRESIDENT, CIRCULATION

Emelda Barea ebarea@jhihealth.com

CORPORATE PRODUCTION MANAGER

John Caggiano jcaggiano@jhihealth.com

EDITORIAL REVIEW BOARD

Mark B. Abelson, MD

James V. Aquavella, MD

Edward S. Bennett, OD

Aaron Bronner, OD

Brian Chou, OD

Kenneth Daniels, OD

S. Barry Eiden, OD

Desmond Fonn, Dip Optom, M Optom

Gary Gerber, OD

Robert M. Grohe, OD

Susan Gromacki, OD

Patricia Keech, OD

Bruce Koffler, MD

Pete Kollbaum, OD, PhD

Jeffrey Charles Krohn, OD

Kenneth A. Lebow, OD

Jerry Legerton, OD

Kelly Nichols, OD

Robert Ryan, OD

Jack Schaeffer, OD

Charles B. Slonim, MD

Kirk Smick, OD

Mary Jo Stiegemeier, OD

Loretta B. Szczołka, OD

Michael A. Ward, FCLSA

Barry M. Weiner, OD

Barry Weissman, OD



contents

Review of Cornea & Contact Lenses
 July/August 2019

6

soft lenses

General Use Soft Lenses

Single Vision..... 6
 Toric..... 10
 Multifocal..... 14
 Toric Multifocal..... 18

Special Use Soft Lenses

Aphakic..... 20
 Hybrid..... 20
 Cosmetic..... 21
 Therapeutic..... 22

24

GP lenses

Materials..... 24
 Distributors..... 28
 Conversion Tables..... 29

32

care products

Soft Lens Care Products..... 32
 GP/Scleral Lens Care Products.... 34

11th Annual OPTOMETRIC GLAUCOMA SYMPOSIUM

Join our faculty of renowned ODs and MDs for a highly interactive meeting covering the most up-to-date information in glaucoma care.

Earn up to **12 CE credits*** for only \$275.

EAST COAST

October 4 - October 5, 2019

Renaissance Baltimore Harborplace Hotel

202 East Pratt Street
Baltimore, MD 21202
Phone: 410-547-1200

Discounted room rate: \$169

Please book with the hotel directly at 800-228-9290. Identify yourself as a participant of ECOGS for group rate. Rooms are limited.

Program Co-chairs:

Murray Fingeret, OD, FAAO

Robert N. Weinreb, MD

Program Faculty:

Michael Chaglasian, OD, FAAO

E. Randy Craven, MD, FACS

Donald C. Hood, MSc, PhD

Pradeep Ramulu, MD, PhD

THREE WAYS TO REGISTER

ONLINE: www.reviewsce.com/ECOGS2019

CALL: 877-451-6514

EMAIL: reviewmeetings@jhihealth.com



Administered by

REVIEW
EDUCATION GROUP

Review Education Group partners with Salus University for those ODs who are licensed in states that require university credit.

Up to
12 CE
Credits*

PROGRAM CO-CHAIRS



Murray Fingeret, OD, FAAO

Chief of the Optometry Section,
Brooklyn/St. Albans Campus,
Department of Veterans Administration
New York Harbor Health Care System

Clinical Professor,
SUNY, College of Optometry



Robert N. Weinreb, MD

Chairman & Distinguished Professor of Ophthalmology
Director of the Shiley Eye Institute
Director of the Hamilton Glaucoma Center
Morris Gleich, M.D. Chair in Glaucoma
University of California San Diego

WEST COAST

December 13 - December 14, 2019

Hyatt Regency Huntington Beach

21500 Pacific Coast Highway
Huntington Beach, CA 92648
Phone: 714-698-1234

Discounted room rate: \$239

Please book with the hotel directly at 877-803-7534. Identify yourself as a participant of WCOGS for group rate. Rooms are limited.

Program Co-chairs:

Murray Fingeret, OD, FAAO

Robert N. Weinreb, MD

Program Faculty:

Jiun Do, MD, PhD

Ben Gaddie, OD, FAAO

Naama Hammel, MD

Richard Madonna, OD, FAAO

THREE WAYS TO REGISTER

ONLINE: www.reviewsce.com/WCOGS2019

CALL: 877-451-6514

EMAIL: reviewmeetings@jhihealth.com



*Approval pending



Pennsylvania College of Optometry

See event website for complete details.

SINGLE VISION

Name	Replacement Cycle	Material	H ₂ O (%)	FDA Group	Diameter (mm)	Base Curve (mm)	Sphere Power (D)	Optic Zone (mm)	Dk
ABB Optical									
Concise MTO Single Vision	quarterly	polymacon	38	I	10.0 to 16.5 (0.10 steps)	8.2; 8.5; 8.8	-20.00 to +20.00 (0.25 steps)		9.0
Concise Sphere	quarterly	polymacon	38	I	14.2, 14.5, 15.0	8.3, 8.6, 8.9, 9.2	-10.00 to +10.00 (0.25 steps)		9.0
Definitive MTO Sphere	quarterly	efofilcon A	74	II	10.0 to 16.0 (0.10 steps)	6.5 to 11.5 (0.10 steps)	-20.00 to +20.00 (0.25 steps)		60.0
Definitive Sphere	quarterly	efofilcon A	74	II	14.2, 14.5, 15.0	8.3, 8.6, 8.9, 9.2	-10.00 to +10.00 (0.25 steps)		60.0
Ocu-Flex-53 Custom Sphere	quarterly	ocufilcon B	53	IV	8.0 to 25.0	6.0 to 11.0 (0.10 steps)	-40.00 to +40.00	varies	18.0
Ocu-Flex-53 Single Vision Planned Replacement	quarterly	ocufilcon B	53	IV	14.0, 14.5, 15.0	8.2, 8.4, 8.6, 8.8	-20.00 to +10.00	8.00	18.0
Ocu-Flex-53 Stock	quarterly	ocufilcon B	53	IV	14.0, 14.5, 15.0	8.2, 8.4, 8.6, 8.8	-20.00 to +20.00	8.00	18.0
Alcon Laboratories									
Air Optix Aqua	monthly	lotrafilcon B	33	I	14.2	8.6	-8.00 to +6.00 (0.25 steps after -8.00), -10.00 to -8.50 (0.50 steps), no plano	8.00	138.0
Air Optix Night & Day Aqua	monthly	lotrafilcon A	24	I	13.8	8.4, 8.6	-10.00 to -8.50 (0.50 steps), -8.00 to plano (0.25 steps), +0.25 to +6.00	8.00	175.0
Air Optix Plus Hydraglyde	monthly	lotrafilcon B	33	I	14.2	8.6	-12.00 to -8.50 (0.50 steps), -8.00 to +6.00 (0.25 steps), +6.50 to +8.00, no plano	8.00	138.0
Dailies AquaComfort Plus	daily	nelfilcon A	69	II	14.0	8.7	-15.00 to -6.50 (0.50 steps), -6.00 to -0.50 (0.25 steps), +0.50 to +8.00 (0.25 steps), +8.00 to +6.50 (0.50 steps)	varies	26.0
Dailies Total1	daily	deltafilcon A	33	IV	14.1	8.5	-12.00 to -6.50 (0.50 steps), -6.00 to -0.50 (0.25 steps), +0.50 to +6.00	8.00	156.0
Focus Dailies	daily	nelfilcon A	69	II	13.8	8.6	-10.00 to -6.50 (0.50 steps), -6.00 to -0.50, +0.50 to +6.00 (0.25 steps)	7.60 to 8.00	26.0
Alden Optical (Bausch + Lomb)									
Alden Classic 38	monthly, quarterly, annually	polymacon	38	I	13.0, 13.5, 14.0, 14.5, 15.0	7.7, 7.9, 8.1, 8.3, 8.5, 8.7, 8.9	-30.00 to +30.00 (0.25 steps)	varies	9.0
Alden Classic 55	monthly, quarterly, annually	methafilcon A	55	I	13.0, 13.5, 14.0, 14.5, 15.0	7.7, 7.9, 8.1, 8.3, 8.5, 8.7, 8.9	-30.00 to +30.00 (0.25 steps)	varies	17.0
Alden HP 49	monthly, quarterly, annually	hioxifilcon B	49	I	10.0 to 16.0 (14.5 std.)	6.5 to 9.7 (8.3, 8.6, 8.9 std.)	-30.00 to +30.00 (0.25 steps)	varies	15.0
Alden HP 59	monthly, quarterly, annually	hioxifilcon A	59	II	10.0 to 16.0 (14.5 std.)	6.5 to 9.7 (8.3, 8.6, 8.9 std.)	-30.00 to +30.00 (0.25 steps)	varies	24.0
Art Optical Contact Lens									
Intelliwave Quarterly Replacement	quarterly	efofilcon A	74	II		MTO	-20.00 to +20.00 (0.25 steps)	8.40	60.0
Intelliwave Semi-Annual Replacement	semi-annually	acofilcon A, hioxifilcon B	48	II		MTO	-20.00 to +20.00 (0.25 steps)	8.40	16.0
KeraSoft Thin Quarterly Replacement	quarterly	efofilcon A	74	II		MTO	-20.00 to +20.00 (0.25 steps)	Custom	60.0

SINGLE VISION

Name	Replacement Cycle	Material	H ₂ O (%)	FDA Group	Diameter (mm)	Base Curve (mm)	Sphere Power (D)	Optic Zone (mm)	Dk
Bausch + Lomb									
Biotrue OneDay	daily	nesofilcon A	78	I	14.2	8.6	-9.00 to -6.50 (0.50 steps), -6.00 to +6.00 (0.25 steps)	9.00	42.0
Optima 38/SP	daily	polymacon	38.6	I	12.0 to 18.0	8.4, 8.7	-20.00 to +20.00	8.00 to 10.00	8.4, 8.5
PureVision	daily, monthly	balafilcon A	36	III	14.0	8.3, 8.6	-6.00 to -0.25, -12.00 to +6.00	8.30	101.0
PureVision 2	monthly	balafilcon A	36	III	14.0	8.6	-12.00 to +6.00	9.00	130.0
SofLens 38	unspecified	polymacon	38.6	I	14.0	8.4, 8.7, 9.0	-9.00 to +4.00 (0.25 steps)	8.00 to 10.00	24.3
Ultra	monthly	samfilcon A	46	I	14.2	8.5	-12.00 to +6.00 (0.25 steps, 0.50 steps after -6.00)	8.50	114.0
Blanchard Contact Lens									
Esstech SV	monthly, quarterly, annually	polymacon	38	I	14.0	8.3, 8.7, 9.1	-6.00 to +6.00 (0.25 steps)		8.4
Onyx	monthly, quarterly, annually	methafilcon A	55	IV	14.2	8.4, 8.8	-12.00 to -6.00 (0.50 steps), -6.00 to +4.00 (0.25 steps), +4.00 to +6.00 (0.50 steps)		18.0
California Optics/Advanced Ultra Vision									
CO Soft 55 Division I	quarterly	methafilcon A	55	IV	14.4, 15.0	8.4, 8.5, 8.7, 8.9	-8.00 to +8.00	8.00	18.8
CO Soft 55 Division II	quarterly	methafilcon A	55	IV	14.4, 15.0	8.4, 8.5, 8.7, 8.9	-10.00 to +10.00	8.00	18.8
CO Soft 55 Division III	quarterly	methafilcon A	55	IV	14.0, 14.5, 15.0	8.0, 8.3, 8.5, 8.6, 8.8, 8.9, 9.0, 9.2	-20.00 to +20.00	8.00	18.8
CO Soft 55 DW	quarterly	methafilcon A	55	IV	13.0, 13.5, 14.0, 14.2, 14.5, 15.0	8.3, 8.4, 8.5, 8.6, 8.7, 8.8, 8.9, 9.0, 9.2	-30.00 to +30.00	8.00 to 9.50	18.8
CO Soft 55 Sphere	quarterly	methafilcon A	55	IV	14.4, 14.5	8.7	-6.00 to +4.00 (0.25 steps)	8.00	18.8
CO Soft SJ Sphere	quarterly	methafilcon A	65	IV	9.0, 10.0, 10.5, 11.0, 11.5, 12.0, 13.0, 13.5	6.5, 7.0, 7.5, 8.0, 8.3, 8.9, 9.2, 10.0, 11.0	-30.00 to +30.00	8.50	18.0
CooperVision									
Avaira Vitality	biweekly	fanfilcon A	55		14.2	8.4	-12.00 to +8.00 (0.50 steps after ±6.00)	8.4	110.0
Biofinity	monthly	comfilcon A	48	I	14.0	8.6	-12.00 to +8.00 (0.50 steps after ±6.00)	8.6	160.0
Biofinity Energys	monthly	comfilcon A	48	I	14.0	8.6	-12.00 to +8.00 (0.50 steps after ±6.00)	8.6	160.0
Biofinity XR	monthly	comfilcon A	48	I	14.0	8.6	-20.00 to -12.50 (0.50 steps), +8.50 to +15.00	8.6	160.0
Biomedics 55 Premier	biweekly	ocufilcon D	55	IV	14.2	8.6, 8.8, 8.9	-10.00 to +6.00 (0.50 steps after -6.00 and +5.00)	8.00	28.1
Clariti 1 Day	daily	somofilcon A with UV blocker	56	I	14.1	8.6	-10.00 to +8.00 (0.50 steps after ±6.00), no plano	8.6	86.0
Frequency 55	monthly	methafilcon A	55	IV	14.4	8.4, 8.7	-8.00 to -0.25 (0.25 steps), -10.00 to +8.00 (0.50 steps after -8.00)	8.50	18.8
Frequency 55 Aspheric*	monthly	methafilcon A	55	IV	14.4	8.4, 8.7	-10.00 to +8.00 (0.50 steps after -8.00), -8.00 to -0.25 (0.25 step)	8.00	20.9
Hydrasoft Sphere	quarterly	methafilcon B	55	IV	14.2, 15.0	8.3, 8.6, 8.9, 9.2	-30.00 to +10.00 (0.25 steps)	8.3, 8.6, 8.9, 9.2	18.8, 15.7
Hydrasoft Sphere Thin	quarterly	methafilcon B	55	IV	14.2, 15.0	8.3, 8.6, 8.9, 9.2	-30.00 to +10.00 (0.25 steps)	8.50	31.3
MyDay	daily	stenfilcon A	54		14.2	8.4	-12.00 to +8.00 (0.50 steps after -6.00 and +5.00), no plano	8.4	100.0
Proclear Sphere	monthly	omafilcon A	62	II	14.2	8.2, 8.6	-20.00 to +20.00 (0.50 steps after ±6.00), -10.00 to plano (0.50 steps after -6.00)	9.00	52.3

*To be discontinued Nov. 2019

SINGLE VISION

Name	Replacement Cycle	Material	H ₂ O (%)	FDA Group	Diameter (mm)	Base Curve (mm)	Sphere Power (D)	Optic Zone (mm)	Dk
GP Specialists									
iSight DW Custom Sphere	annually	methafilcon A	55	IV	13.0 to 15.5	8.0 to 9.5	-25.00 to +25.00 (0.25 steps)		18.8
iSight DW Gold Series	annually	hioxifilcon A	59	II	13.0 to 15.5	8.0 to 9.5	-25.00 to +25.00 (0.25 steps)		28.0
Johnson & Johnson Vision Care									
1-Day Acuvue Moist	daily	etafilcon A	58	IV	14.2	8.5, 9.0	-12.00 to -0.50, +0.50 to +6.00 (0.50 steps after -6.00)	8.50, 9.00	25.5
1-Day Acuvue Trueye	daily	narafilcon A	46	I	14.2	8.5, 9.0	-12.00 to -0.50, +0.50 to +6.00 (0.50 steps after -6.00)	8.00	118.0
Acuvue 2	biweekly	etafilcon A	58	IV	14.0	8.3, 8.7	-12.00 to -6.50 (0.50 steps), -6.00 to -0.50 (0.25 steps), +0.50 to +6.00 (0.25 steps), +6.50 to +8.00 (0.50 steps)	8.30, 8.70	28.0
Acuvue Oasys 1-Day	daily	senofilcon A	38	I	14.3	8.5, 9.0	-12.00 to -0.50, +0.50 to +8.00 (0.50 steps after ±6.00)	8.50, 9.00	121.0
Acuvue Oasys with Transitions	biweekly	senofilcon A	38	I	14.0	8.4, 8.8	-12.00 to -0.25, +0.25 to +8.00 (0.50 steps after ±6.00)	8.50, 9.00	121.0
Kontur Kontakt Lens									
Kontur 55 Precision Sphere I	annually	methafilcon A	55	IV	12.0 to 16.0 (0.50 steps)	6.8 to 9.8 (0.20 steps up to 8.0, 0.30 steps after)	-20.00 to +20.00	8.00	18.8
Kontur 55 Precision Sphere II	annually	methafilcon A	55	IV	12.0 to 16.0 (0.50 steps)	6.8 to 9.8 (0.30 steps)	-20.00 to +20.00		18.8
Kontur 55 Precision Sphere III	annually	methafilcon A	55	IV	18.0, 20.0, 22.0, 24.0	6.5, 7.0, 7.5	plano		18.8
Kontur 55 Sphere	annually	methafilcon A	55	IV	15.0	8.3, 8.6, 8.9	-20.00 to +10.00	8.00	18.8
Kontur Custom Sphere Prism	annually	methafilcon A	55	IV	15.0	8.3, 8.6, 8.9	-20.00 to +20.00		18.8
Menicon America									
Miru 1 Day Flat Pack	daily	hioxifilcon A	57	II	14.2	8.4, 8.6	-10.00 to -6.50 (0.50 steps), -6.00 to -0.50 (0.25 steps), +0.50 to +4.00 (0.25 steps)	8.6	25.38
Miru 1 Month	monthly	asmofilcon A	40		14.0	8.3, 8.6	-13.00 to -6.50 (0.50 steps), +0.50 to +6.00 (0.25 steps)		161.0
Metro Optics									
MetroSoft II	quarterly	polymacon, hioxifilcon B, Definitive	38, 49, 74	I	13.5 (polymacon), 14.2 (Definitive/hioxifilcon B)	8.3, 8.6, 8.9 (polymacon/Definitive), 8.1, 8.4, 8.7 (hioxifilcon B)	-12.00 to +12.00	9.00	8.4, 15.0, 60.0
MetroSoft Sphere EP	quarterly	polymacon	38	I	11.0 to 15.5	7.0 to 9.5	-25.00 to +25.00	9.00	8.4
Optical Connection									
A+ Wave	monthly	etafilcon A	58	IV	14.0	8.5	-8.00 to -6.00 (0.50 steps), -6.00 to -0.25 (0.25 steps), +0.25 to +4.00 (0.25 steps)	9.50	26.3
BioCurve 1-Day	daily	methafilcon A	55	IV	14.2	8.6	-8.00 to -6.00 (0.50 steps), -6.00 to -0.50 (0.25 steps), +0.50 to +4.00 (0.25 steps), +4.00 to +6.00 (0.50 steps)	9.50	30.0
BioCurve Advanced Aspheric	monthly	methafilcon A	55	IV	14.3	8.4, 8.7	-12.00 to -6.00 (0.50 steps), -6.00 to -0.25 (0.25 steps), +0.25 to +6.00 (0.25 steps), +6.00 to +8.00 (0.50 steps)	9.50	19.0
Definition AC	monthly	methafilcon A	55	IV	14.2	8.3, 8.6	-8.00 to -6.00 (0.50 steps), -6.00 to -0.50 (0.25 steps), +0.50 to +4.00 (0.25 steps), +4.00 to +6.00 (0.50 steps)	9.50	19.0
Definition AC Everyday Comfort	monthly	methafilcon A	55	IV	14.2	8.6	-8.00 to -6.00 (0.50 steps), -6.00 to -0.50 (0.25 steps), +0.50 to +4.00 (0.25 steps), +4.00 to +6.00 (0.50 steps)	9.50	19.0

SINGLE VISION

Name	Replacement Cycle	Material	H ₂ O (%)	FDA Group	Diameter (mm)	Base Curve (mm)	Sphere Power (D)	Optic Zone (mm)	Dk
SpecialEyes									
49 Sphere	semi-annually, annually	hioxifilcon B	49	I	12.5 to 16.0 (0.10 steps)	6.9 to 9.5 (0.10 steps)	-25.00 to +25.00 (0.10 steps)	8.00 to 10.00	15.0
54 Sphere	quarterly	hioxifilcon D	54	II	12.5 to 16.0 (0.10 steps)	6.9 to 9.5 (0.10 steps)	-25.00 to +25.00 (0.10 steps)	8.00 to 10.00	23.0
59 Sphere	quarterly	hioxifilcon A	59	II	12.5 to 16.0 (0.10 steps)	6.9 to 9.5 (0.10 steps)	-25.00 to +25.00 (0.10 steps)	8.00 to 10.00	24.0
SynergEyes									
SimplifEyes 1Day	daily	etafilcon A	58	IV	14.2	8.6	-6.00 to -0.50 (0.25 steps), +0.50 to +4.00		34.0
Unilens (Bausch + Lomb)									
C- Vue 1 Day ASV	daily	methafilcon A	55	IV	14.2	8.5	-8.00 to -6.00 (0.50 steps), -6.00 to +4.00 (0.25 steps), +4.50 to +6.00 (0.50 steps)	9.50	19.5
C-Vue Advanced Single Vision	biweekly	hioxifilcon D	54	II	12.5 to 17.0	7.0 to 10.5	-20.00 to +20.00	5.00 to 10.00	23.0
C-Vue Aspheric Single Vision	biweekly	methafilcon A	55	IV	14.2	8.5	-12.00 to -6.50 (0.50 steps), -6.00 to +4.00 (0.25 steps), +4.50 to +8.00 (0.50 steps)	9.5	19.5
C-Vue HydraVue Single Vision	monthly	efofilcon A	74	II	12.0 to 16.0	8.0 to 9.5	-20.00 to +20.00 (0.25 steps)	8.00	59.8
Sof-Form 55 EW	annually	methafilcon A	55	IV	14.0, 15.0	8.3, 8.6, 8.9	-10.00 to +9.75 (0.25 steps)	7.50	18.8
Sof-Form II	annually	polymacon	38	I	14.0	8.3, 8.5, 8.7, 8.9	-10.00 to +9.75 (0.25 steps)	8.00	8.4
Visionary Optics									
XP Sphere	unspecified	methafilcon A, hioxifilcon A	55, 59	I, II	6.0 to 20.0	4.3 to 22.0	-75.00 to +50.00 (0.25 steps)	varies	18, 24
Visioneering Technologies									
NaturalVue Sphere	daily	etafilcon A	58	II	14.2	8.5	-12.25 to +4.00 (0.25 steps)		19.7
X-Cel Specialty Contacts									
Extreme H2O 54%	biweekly	hioxifilcon D	54	II	13.6, 14.2	8.3, 8.6	-12.00 to -0.25, +0.25 to +6.00; -11.00 to -0.25, +0.25 to +6.00		21.0
Extreme H2O 59% Thin	biweekly	hioxifilcon A	59	II	14.2	8.6	-8.00 to -0.25, +0.25 to +6.00	0.08 (at -3.00D)	28.0
Extreme H2O 59% Xtra	biweekly	hioxifilcon A	59	II	14.2	8.3, 8.6	-8.00 to -0.25; -10.00 to -0.25, +0.25 to +6.00		28.0
Extreme H2O Daily	daily	hioxifilcon A	59	II	13.6, 14.2, 14.8	8.2, 8.5, 8.7	-10.00 to -0.50, +0.50 to +6.00		28.0
Extreme H2O Monthly	monthly	hioxifilcon D	54	II	14.0	8.1, 8.4, 8.7	-6.00 to -0.25; -10.00 to -0.25; -10.00 to -0.25, +0.25 to +6.00		21.0
Extreme H2O Weekly	weekly	hioxifilcon A	59	II	13.6, 14.2, 14.8	8.2, 8.3, 8.5, 8.7	-10.00 to -0.50, +0.50 to +6.00		28.0
Flexlens Sphere	monthly, quarterly	acofilcon A, acofilcon B, efofilcon A, hefilcon A, hioxifilcon A, hioxifilcon B, methafilcon A	58, 74, 45, 59, 45, 55	I, II, IV	10.0 to 16.0 (0.10 steps)	6.0 to 11.0 (0.10 steps)	-40.00 to +40.00 (0.25 steps)	varies	varies
IdealSoft Spherical	quarterly, semi-annual	polymacon	38	I	14.0	8.3, 8.6, 8.9	-20.00 to +20.00 (0.50 steps over ±8.00)		9.0

TORIC											
Name	Replacement Cycle	Material	H ₂ O (%)	FDA Group	Diameter (mm)	Base Curve (mm)	Sphere Power (D)	Cylinder Power (D)	Axes	Optic Zone (mm)	Dk
ABB Optical											
Concise MTO Toric	quarterly	polymacon	38	I	10.0 to 16.5 (0.10 steps)	6.5 to 11.5 (0.10 steps)	-20.00 to +20.00 (0.25 steps)	-10.00 to -0.25 (0.25 steps)	0° to 180° (1° steps)		
Concise Toric	quarterly	polymacon	38	I	14.2, 14.5, 15.0	8.3, 8.6, 8.9, 9.2	-10.00 to +10.00 (0.25 steps)	-3.00 to -0.50 (0.25 steps)	0° to 180° (1° steps)		
Definitive MTO Toric	quarterly	efofilcon A	74	II	10.0 to 16.0 (0.10 steps)	6.5 to 11.5 (0.10 steps)	-20.00 to +20.00 (0.25 steps)	-10.00 to -0.25 (0.25 steps)	0° to 180° (1° steps)		60.0
Definitive Toric	quarterly	efofilcon A	74	II	14.2, 14.5, 15.0	8.3, 8.6, 8.9, 9.2	-10.00 to +10.00 (0.25 steps)	-3.00 to -0.50 (0.25 steps)	0° to 180° (1° steps)		60.0
Ocu-Flex-53 Custom Toric	quarterly	ocufilcon B	53	IV	14.5, 15.0	8.6, 8.8	-7.00 to +4.00	-3.00 to -0.75	Any	8.00	18.0
Ocu-Flex-53 Special Custom Toric	quarterly	ocufilcon B	53	IV	14.0, 14.5, 15.0	8.4, 8.6, 8.8, 9.0	-20.00 to +20.00	-6.00 to -0.50	Any	8.00	18.0
Alcon Laboratories											
Air Optix for Astigmatism	monthly	lotrafilcon B	33	I	14.5	8.7	-10.00 to -6.50 (0.50 steps), -6.00 to +6.00 (0.25 steps)	-0.75, -1.25, -1.75, -2.25	10° to 180° (10° steps)	7.50	108.0
Air Optix Plus Hydraglyde for Astigmatism	monthly	lotrafilcon B	33	I	14.5	8.7	-10.00 to -6.50 (0.50 steps), -6.00 to +6.00 (0.25 steps)	-0.75, -1.25, -1.75, -2.25	10° to 180° (10° steps)	7.50	108.0
Dailies Aqua Comfort Plus Toric	daily	nelfilcon A	69	II	14.4	8.8	-8.00 to -6.50 (0.50 steps), -6.00 to +4.00 (0.25 steps)	-0.75, -1.25, -1.75	10°, 20°, 70°, 80°, 90°, 100°, 110°, 160°, 170°, 180°	varies	26.0
Focus Dailies Toric	daily	nelfilcon A	69	II	14.2	8.6	-8.00 to -6.50 (0.50 steps), -6.00 to +4.00 (0.25 steps)	-0.75, -1.50	20°, 70°, 90°, 110°, 160°, 180°	7.60 to 8.00	26.0
Alden Optical (Bausch + Lomb)											
Alden Classic Toric 38	monthly, quarterly, annually	polymacon	38	I	10.0 to 16.0 (13.0, 13.5, 14.0 std.)	6.5 to 9.7 (7.7, 7.9, 8.1, 8.3, 8.5, 8.7, 8.9 std.)	-30.00 to +30.00 (0.25 steps)	-10.00 to -0.50 (0.25 steps)	1° to 180° (1° steps)	varies	9.0
Alden Classic Toric 55	monthly, quarterly, annually	methafilcon A	55	I	10.0 to 16.0 (13.0, 13.5, 14.0 std.)	6.5 to 9.7 (7.7, 7.9, 8.1, 8.3, 8.5, 8.7, 8.9 std.)	-30.00 to +30.00 (0.25 steps)	-10.00 to -0.50 (0.25 steps)	1° to 180° (1° steps)	varies	17.0
Alden HP 49 Toric	monthly, quarterly, annually	hioxifilcon A	49	II	10.0 to 16.0 (14.5 std.)	6.5 to 9.7 (8.3, 8.6, 8.9 std.)	-30.00 to +30.00 (0.25 steps)	-10.00 to -0.50 (0.25 steps)	1° to 180° (1° steps)	varies	15.0
Alden HP 59 Toric	monthly, quarterly, annually	hioxifilcon B	59	II	10.0 to 16.0 (14.5 std.)	6.5 to 9.7 (8.3, 8.6, 8.9 std.)	-30.00 to +30.00 (0.25 steps)	-10.00 to -0.50 (0.25 steps)	1° to 180° (1° steps)	varies	24.0
Art Optical Contact Lens											
Intelliwave Toric Quarterly Replacement	quarterly	efofilcon A	74	II		MTO	-20.00 to +20.00 (0.25 steps)	Up to -12.00 (0.50 steps)	1° to 180° (1° steps)	8.40	60.0
Intelliwave Toric Semi-Annual Replacement	semi-annually	acofilcon A	49			MTO	-20.00 to +20.00 (0.25 steps)	Up to -12.00 (0.50 steps)	1° to 180° (1° steps)	8.40	16.0
Rosek2 Soft	quarterly	efofilcon A	74	II	14.3 to 15.3	7.4 to 9.0	-30.00 to +30.00 (0.25 steps)	Up to -10.00	1° to 180° (1° steps)		60.0

TORIC

Name	Replacement Cycle	Material	H ₂ O (%)	FDA Group	Diameter (mm)	Base Curve (mm)	Sphere Power (D)	Cylinder Power (D)	Axes	Optic Zone (mm)	Dk
Bausch + Lomb											
Biotrue OneDay for Astigmatism	daily	nesofilcon A	78	I	14.5	8.4	-9.00 to -6.50 (0.50 steps), -6.00 to +4.00 (0.25 steps)	-0.75, -1.25, -1.75, -2.25	0° to 180°		42.0
Optima Toric	unspecified	hefilcon B	45	I	13.0 to 15.0	8.3, 8.6, 8.9	-9.00 to +6.00	Up to 5.00	5° increments around the clock	8.00	13.0
PureVision Toric	unspecified	balafilcon A	36	III	14.0	8.7	-6.00 to -0.25 (0.25 steps)	-0.75, -1.25, -1.75	10° to 180° (10° steps)	8.50	91.0 to 101.0
SofLens Daily Disposable Toric	daily	hilafilcon B	59		14.2	8.6	-9.00 to -6.50 (0.50 steps), -6.00 to plano (0.25 steps)	-0.75, -1.25, -1.75	0° to 180° (10° steps)		22.0
SofLens Toric	weekly	alphafilcon A	66	II	14.5	8.5	-9.00 to -6.50 (0.50 steps), -6.00 to +6.00 (0.25 steps)	-0.75, -1.25, -1.75, -2.25, -2.75	0° to 180° (10° steps)	8.00	22.0
Ultra for Astigmatism	monthly	samfilcon A	46	I	14.5	8.6	-9.00 to +6.00 (0.25 steps, 0.50 steps after -6.00)	-0.75, -1.25, -1.75, -2.25, -2.75	10° to 180° (10° steps)		114.0
California Optics/Advanced Ultra Vision											
CO Soft 55 Toric Conventional Wear	quarterly	methafilcon A	55	IV	14.5	8.4, 8.7	-30.00 to +30.00	-10.25 to -0.75	0° to 360° (1° steps)	8.50	18.0
CO Soft 55 Toric Custom BT	quarterly	methafilcon A	55	IV	14.0, 14.5, 15.0	8.6, 8.9, 9.2	-20.00 to +20.00	-5.00 to -0.75 (0.25 steps)	Any	8.00	18.8
CO Soft 55 Toric Division I	quarterly	methafilcon A	55	IV	14.5, 15.0	8.6, 8.8, 8.9, 9.0	-8.00 to +4.00	-3.25 to -0.75 (0.25 steps)	Any	8.00	18.8
CO Soft 55 Toric Division II	quarterly	methafilcon A	55	IV	14.5, 15.0	8.6, 8.8, 8.9, 9.0	-10.00 to +10.00	-5.00 to -0.75 (0.25 steps)	Any	8.00	18.8
CO Soft 55 Toric Division III	quarterly	methafilcon A	55	IV	14.0, 14.5, 15.0	8.0, 8.3, 8.5, 8.6, 8.8, 8.9, 9.0, 9.2	-20.00 to +20.00	-10.00 to -0.75 (0.25 steps)	Any	8.00	18.8
CO Soft 55 Toric Division III	quarterly	methafilcon A	55	IV	14.0, 14.5, 15.0	8.3, 8.6, 8.9, 9.2	-20.00 to +20.00	-10.00 to -0.75 (0.25 steps)	Any	8.00	18.8
CooperVision											
Avaira Vitality Toric	biweekly	fanfilcon A	55		14.5	8.5	-10.00 to +8.00 (0.50 steps after ±6.00)	-0.75, -1.25, -1.75, -2.25	10° to 180° (10° steps)		90.0
Biofinity Toric	monthly	comfilcon A	48	I	14.5	8.7	-10.00 to +8.00 (0.50 steps after ±6.00)	-0.75, -1.25, -1.75, -2.25	10° to 180° (10° steps)		116.0
Biofinity XR toric	monthly	comfilcon A	48		14.5	8.7	-10.00 to +10.00 (0.50 steps after ±6.00)	-0.75 to -5.75 (0.50 steps)	5° to 180° (5° steps)		116.0
Biomedics Toric	biweekly	ocufilcon D	55	IV	14.5	8.7	-9.00 to +6.00 (0.50 steps after -6.00 and +5.00)	-0.75, -1.25, -1.75, -2.25	10° to 180° (10° steps)	8.00	17.8
Clariti 1 Day Toric	daily	somofilcon A	56	I	14.3	8.6	-9.00 to plano (0.50 steps after -6.50), +0.25 to +4.00 (0.25 steps)	-0.75, -1.25, -1.75, -2.25	10°, 20°, 60°, 70°, 80°, 90°, 100°, 110°, 120°, 160°, 170°, 180°		57.0
Hydrasoft Toric	quarterly	methafilcon B	55	IV	14.2, 15.0	8.3, 8.6, 8.9, 9.2	-30.00 to +30.00 (0.25 steps)	-10.00 to -0.50 (0.25 steps)	1° to 180° (1° steps)	8.00	14.5
Hydrasoft Toric Thin	quarterly	methafilcon B	55	IV	14.2, 15.0	8.3, 8.6, 8.9, 9.2	-30.00 to +30.00 (0.25 steps)	-10.00 to -0.50 (0.25 steps)	1° to 180° (1° steps)	8.00	14.5
MyDay Toric	daily	stenfilcon A	54	I	14.5	8.6	-10.00 to plano (0.50 steps after -6.00), +0.50 to +6.00 (0.50 steps)	-0.75, 1.25, -1.75, -2.25	10°, 20°, 70°, 80°, 90°, 100°, 110°, 160°, 170°, 180°		80.0
Proclear Toric	daily	omafilcon B	62	II	14.4	8.4, 8.8	-8.00 to +6.00 (0.50 steps after -6.50)	-0.75, -1.25, -1.75, -2.25	10° to 180° (10° steps)	8.00	30.9
Proclear Toric XR	monthly	omafilcon B	62	II	14.0	8.4, 8.8	-10.00 to +10.00 (0.50 steps after ±6.00)	-0.75 to -5.75 (0.50 steps)	5° to 180° (5° steps)	8.80	30.9
Vertex Toric*	biweekly	methafilcon A	55	IV	14.4	8.6	-8.00 to +6.00 (0.50 steps after -6.50)	-0.75, -1.25, -1.75, -2.25	10° to 180° (10° steps)	8.80	17.9

*To be discontinued Nov. 2019

TORIC											
Name	Replacement Cycle	Material	H ₂ O (%)	FDA Group	Diameter (mm)	Base Curve (mm)	Sphere Power (D)	Cylinder Power (D)	Axes	Optic Zone (mm)	Dk
Gelflex USA											
Synergy	quarterly	hioxifilcon B	49	I	Any	Any	-40.00 to +40.00 (0.25 steps)	-15.00 to -0.25 (0.25 steps)	Any (1° steps)	varies	15.0
GP Specialists											
iSight DW Custom Toric	annually	methafilcon A	55	IV	13.0 to 15.5	8.0 to 9.5	-25.00 to +25.00 (0.25 steps)	-8.50 to -0.75 (0.25 steps)	Any	varies	28.0
iSight DW Gold Series	annually	hioxifilcon A	59	II	13.0 to 15.5	8.0 to 9.5	-25.00 to +25.00 (0.25 steps)	-8.50 to -0.75 (0.25 steps)	Any	varies	28.0
Johnson & Johnson Vision Care											
1-Day Acuvue Moist for Astigmatism	daily	etafilcon A	58		14.5	8.5	<i>high minus</i> : -9.00 to -6.50 (0.50 steps), <i>low minus</i> : -6.00 to plano (0.25 steps), <i>plus</i> : +0.25 to +4.00 (0.25 steps)	-0.75, -1.25, -1.75 for all; -2.25 also in low minus only	10° to 180° (10° steps) for low minus; 10°, 20°, 70°, 80°, 90°, 100°, 110°, 160°, 170°, 180° for high minus and all plus		23.8
Acuvue Oasys 1-Day for Astigmatism	daily	senofilcon A	38		14.3	8.5	<i>high minus</i> : -9.00 to -6.50 (0.50 steps), <i>low minus</i> : -6.00 to plano (0.25 steps), <i>plus</i> : +0.25 to +4.00 (0.25 steps)	-0.75, -1.25, -1.75 for all; -2.25 also in low minus only	10° to 180° (10° steps) for low minus with cyl of -0.75, -1.25 or -1.75; 10°, 20°, 70°, 80°, 90°, 100°, 110°, 160°, 170°, 180° for low minus with cyl of -2.25, high minus and all plus		129.0
Acuvue Oasys 2-Week for Astigmatism	biweekly	senofilcon A	38		14.5	8.6	<i>high minus</i> : -9.00 to -6.50 (0.50 steps), <i>low minus</i> : -6.00 to plano (0.25 steps), <i>plus</i> : +0.25 to +6.00 (0.25 steps)	-0.75, -1.25, -1.75, -2.25, -2.75	10° to 180° (10° steps)		129.3
Acuvue Vita for Astigmatism	monthly	senofilcon C	41		14.5	8.6	<i>high minus</i> : -9.00 to -6.50 (0.50 steps), <i>low minus</i> : -6.00 to plano (0.25 steps), <i>plus</i> : +0.25 to +4.00 (0.25 steps)	-0.75, -1.25, -1.75 for all; -2.25 also in low minus only	10° to 180° (10° steps) for low minus with cyl of -0.75, -1.25 or -1.75; 10°, 20°, 70°, 80°, 90°, 100°, 110°, 160°, 170°, 180° for low minus with cyl of -2.25, high minus and all plus		129.0
Kontur Kontakt Lens											
Kontur 55 Toric Div. I	annually	methafilcon A	55	IV	15.0, 16.0	8.3, 8.6, 8.9	-6.00 to +4.00	-2.00 to -0.75	Any (1° steps)	varies	18.8
Kontur 55 Toric Div. II	annually	methafilcon A	55	IV	15.0, 16.0	8.3, 8.6, 8.9	-20.00 to +10.00	-3.50 to -0.75	Any (1° steps)	varies	18.8
Kontur 55 Toric Div. III	annually	methafilcon A	55	IV	15.0, 16.0	8.3, 8.6, 8.9	-20.00 to +10.00	-5.00 to -0.75	Any (1° steps)	varies	18.8
Kontur 55 Toric Div. IV Custom	annually	methafilcon A	55	IV	14.0, 14.5, 15.0, 16.0	8.0, 8.3, 8.6, 8.9	-20.00 to +10.00	-5.00 to -0.75	Any (1° steps)	varies	18.8
Menicon America											
Miru 1 Day Toric Flat Pack	daily	hioxifilcon A	57	II	14.5	8.6	-10.00 to -6.50 (0.50 steps), -6.00 to -0.25 (0.25 steps), +0.25 to +2.00 (0.25 steps)	-0.75, -1.25, -1.75 (only in 180°)	15°, 90°, 165°, 180°		25.38
Miru 1 Month Toric	monthly	asmofilcon A	40		14.0	8.6	-10.00 to -6.50 (0.50 steps), -6.00 to plano (0.25 steps)	-0.75, -1.25, -1.75	10°, 20°, 80°, 90°, 100°, 160°, 170°, 180°		161.0

TORIC

Name	Replacement Cycle	Material	H ₂ O (%)	FDA Group	Diameter (mm)	Base Curve (mm)	Sphere Power (D)	Cylinder Power (D)	Axes	Optic Zone (mm)	Dk
Optical Connection											
BioCurve Toric	monthly	methafilcon A	55	IV	14.3	8.4, 8.7	-12.00 to +8.00 (0.50 steps over ±6.00)	-1.00, -1.75, -2.50	Around clock in 10° steps; 10°, 20°, 70°, 80°, 90°, 100°, 110°, 160°, 170°, 180°	8.00	19.0
Definition Toric	monthly	methafilcon A	55	IV	14.2	8.4, 8.6	-12.00 to +8.00 (0.50 steps over ±6.00)	-1.00, -1.75, -2.50	Around clock in 10° steps; 10°, 20°, 70°, 80°, 90°, 100°, 110°, 160°, 170°, 180°	8.00	19.0
SpecialEyes											
49 Toric	semi-annually, annually	hioxifilcon B	49	I	12.5 to 16.0 (0.10 steps)	6.9 to 9.5 (0.10 steps)	-25.00 to +25.00 (0.10 steps)	-8.00 to -0.50 (0.10 steps)	1° to 180° (1° steps)	8.00 to 10.00	15.0
54 Toric	quarterly	hioxifilcon D	54	II	12.5 to 16.0 (0.10 steps)	6.9 to 9.5 (0.10 steps)	-25.00 to +25.00 (0.10 steps)	-8.00 to -0.50 (0.10 steps)	1° to 180° (1° steps)	8.00 to 10.00	23.0
59 Toric	quarterly	hioxifilcon A	59	II	12.5 to 16.0 (0.10 steps)	6.9 to 9.5 (0.10 steps)	-25.00 to +25.00 (0.10 steps)	-8.00 to -0.50 (0.10 steps)	1° to 180° (1° steps)	8.00 to 10.00	24.0
Unilens (Bausch + Lomb)											
C-Vue 55 Custom Toric	quarterly	methafilcon A	55	IV	13.5 to 15.5	7.8 to 9.5	-20.00 to +20.00	Up to -4.00	0° to 180° (1° steps)	varies	18.8
C-Vue Advanced HydraVue Toric	monthly	efrofilcon A	74	II	12.0 to 16.0	8.0 to 9.5	-20.00 to +20.00 (0.25 steps)	-10.00 to -0.25	Any (1° steps)	8.00	59.8
C-Vue Advanced Toric	monthly	hioxifilcon D	54	II	12.5 to 17.0	7.0 to 10.5	-20.00 to +20.00	Up to -8.00	0° to 180° (1° steps)	8.00	23.0
United Contact Lens											
UCL Custom	quarterly, annually	ocufilcon A	55	IV	14.5, 15.0, 15.5	8.1, 9.5, 9.8	-20.00 to +20.00	-10.00 to -0.50	Any	8.00	18.8
UCL Toric	quarterly, annually	ocufilcon A	55	IV	14.5, 15.0	8.3, 8.6, 8.9, 9.2	-20.00 to +20.00	-7.00 to -0.75	Any	8.00	10.3
UCL Tresoft Toric	quarterly, annually	ocufilcon A	46	III	14.5, 15.0	8.2, 8.5, 8.8	-20.00 to +20.00	-7.00 to -0.75	Any	8.00	8.8
Visionary Optics											
XP Toric	unspecified	methafilcon A, hioxifilcon A	55, 59	I, II	8.0 to 18.0	4.3 to 22.0	-75.00 to +50.00 (0.25 steps)	-15.00 to -0.25 (0.25 steps)	1° to 180° (1° steps)	varies	18, 24
X-Cel Specialty Contacts											
Extreme H2O Low Cyl Toric	monthly	hioxifilcon D	54	II	14.2	8.6	-6.00 to +4.00	-0.65	15° to 180° (15° steps)		21.0
Extreme H2O Mid Cyl Toric	monthly	hioxifilcon D	54	II	14.2	8.6	-6.00 to +4.00	-1.25	10° to 180° (10° steps)		21.0
Extreme H2O Toric XRP	monthly	hioxifilcon A	59	II	14.4, 15.0	8.4, 8.8	-10.00 to +10.00 (0.25 steps)	-5.75 to -0.75 (0.50 steps)	5° to 180° (5° steps)		21.0
Flexlens ARC	monthly, quarterly	hioxifilcon B, efrofilcon A	49, 74	I, II	13.0 to 16.0 (0.50 steps)	6.0 to 8.7 (0.10 steps)	-20.00 to +20.00	-10.00 to -0.75 (0.25 steps)	1° to 180° (1° steps)		60.0
Flexlens Custom Toric	monthly, quarterly	hioxifilcon B	49	I	10.0 to 16.0 (0.10 steps)	6.0 to 11.0 (0.10 steps)	-40.00 to +40.00 (0.25 steps)	-10.00 to -0.50 (0.25 steps)	1° to 180°		13.2
Flexlens Toric	monthly, quarterly	hioxifilcon B	49	I	10.0 to 16.0 (0.10 steps)	8.0 to 9.2 (0.10 steps)	-40.00 to +40.00 (0.25 steps)	-10.00 to -0.50 (0.25 steps)	Any	7.50	13.2
Westhin Toric	quarterly, annually	methafilcon A, hioxifilcon A, hioxifilcon B, polycapton	49, 55, 59, 74		13.5 to 15.0 (0.10 steps)	8.0 to 9.5 (0.10 steps)	-20.00 to +20.00 (0.25 steps)	-10.00 to -0.50 (0.25 steps)	1° to 180° (1° steps)	varies	varies

MULTIFOCAL												
Name	Replacement Cycle	Material	H ₂ O (%)	FDA Group	Diameter (mm)	Base Curve (mm)	Sphere Power (D)	Add Power (D)	Add Type	Optic Zone (mm)	Dk	
ABB Optical												
Concise Multifocal	quarterly	methafilcon A, benz, polymacon	55, 49, 38	I	14.5	8.4, 8.6	-7.00 to +4.00 (0.25 steps)	+0.50 to +3.00 (0.25 steps)			18.0, 15.0, 9.0	
Concise Multifocal MTO	quarterly	methafilcon A, benz, polymacon	55, 49, 38	I	13.0 to 16.0 (0.10 steps)	7.8 to 10.0 (0.10 steps)	-20.00 to +20.00 (0.25 steps)	+0.50 to +3.50 (0.25 steps)			18.0, 15.0, 9.0	
Definitive MTO Multifocal	quarterly	efofilcon A	74	II	13.5 to 15.5 (0.10 steps)	7.5 to 9.6 (0.30 steps)	-20.00 to +10.00 (0.25 steps)	Low: up to +2.25; High: up to +2.75			60.0	
Definitive Multifocal	quarterly	efofilcon A	74	II	14.2, 14.5	8.3, 8.6, 8.9	-10.00 to +10.00 (0.25 steps)	Low: up to +2.25; High: up to +2.75			60.0	
Ocu-Flex-53 Multifocal	quarterly, annually	ocufilcon B	53	IV	14.5	8.4, 8.6	-8.00 to +6.00 (0.25 steps)	Low: up to +2.25; High: up to +3.50		1.90, 2.18	18.0	
Alcon Laboratories												
Air Optix Aqua Multifocal	monthly	lotrafilcon B	33	I	14.2	8.6	-10.00 to +6.00 (0.25 steps)	Low (up to +1.25), Med (+1.50 to +2.00), Hi (+2.25 to +2.50)	center-near bi-aspheric	varies	138.0	
Dailies AquaComfort Plus Multifocal	daily	nelfilcon A	69	II	14.0	8.7	-10.00 to +6.00 (0.25 steps)	Low (up to +1.25), Med (+1.50 to +2.00), Hi (+2.25 to +2.50)	center-near aspheric	varies	26.0	
Dailies Total1 Multifocal	daily	deltafilcon A	33	III	14.1	8.5	-10.00 to +6.00 (0.25 steps)	Lo (up to +1.25), Med (+1.50 to +2.00), Hi (+2.25 to +2.50)	center-near aspheric	varies	156.0	
Aiden Optical (Bausch + Lomb)												
Astera Multifocal	monthly, quarterly, annually	hioxifilcon D	54	II	10.0 to 16.0 (14.5 std.)	6.5 to 9.7 (8.3, 8.6, 8.9 std.)	-30.00 to +30.00 (0.25 steps)	+1.00 to +4.00	center near	8.00	21.0	
Art Optical Contact Lens												
Intelliwave Multifocal Quarterly Replacement	quarterly	efofilcon A	74	II		MTO	-20.00 to +20.00 (0.25 steps)	Up to +4.00 center near simultaneous		8.40	60.0	
Intelliwave Multifocal Semi-Annual Replacement	semi-annually	acofilcon A, hioxifilcon B	48			I, II	MTO	-20.00 to +20.00 (0.25 steps)	Up to +4.00 center near simultaneous		8.40	16.0
Bausch + Lomb												
Biotrue OneDay for Presbyopia	daily	nesofilcon A	78	II	14.2	8.6	-9.00 to +6.00 (0.25 steps)	Low: +0.75 to +1.50; High: +1.75 to +2.50	center-near aspheric optics, 3-zone progressive	9.00	42.0	
PureVision 2 for Presbyopia	monthly	balafilcon A	36	III	14.0	8.6	-10.00 to +6.25 (0.25 steps)	Low: +0.75 to +1.50 (spectacle add); High: +1.75 to +2.50 (spectacle add)	center-near aspheric optics, 3-zone progressive	9.00	91.0 to 101.0	
PureVision Multifocal	monthly	balafilcon A	36	I	14.0	8.6	-10.00 to +6.00 (0.25 steps)	Low: +0.75 to +1.50; High: +1.75 to +2.50	center-near aspheric optics	8.00	91.0 to 101.0	
SofLens Multifocal	planned replacement	polymacon	38.6	I	14.5	8.5, 8.8	-10.00 to +6.00 (0.25 steps)	Low: +0.75 to +1.50; High: +1.75 to +2.50	front-surface, center-near aspheric optics	8.00	8.4	
SofLens Multifocal	unspecified	polymacon	38	I	14.5	8.5, 8.8	-10.00 to +6.00 (0.25 steps)	Low: +0.75 to +1.50; High: +1.75 to +2.50	front-surface, center-near aspheric optics	8.00	8.4	
Ultra for Presbyopia	monthly	samfilcon A	46	I	14.2	8.5	-10.00 to +6.00 (0.25 steps) (plano)	Low: +0.75 to +1.50; High: +1.75 to +2.50	center-near aspheric optics, 3-zone progressive		114.0	

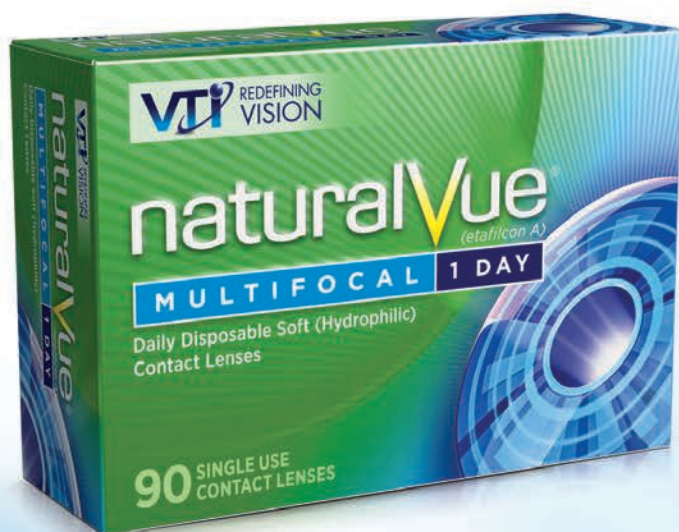
MULTIFOCAL

Name	Replacement Cycle	Material	H ₂ O (%)	FDA Group	Diameter (mm)	Base Curve (mm)	Sphere Power (D)	Add Power (D)	Add Type	Optic Zone (mm)	Dk
Blanchard Contact Lens											
Esstech PS Multifocal	annually	polymacon	38	I	14.0	8.3, 8.7, 9.1	-6.00 to +6.00 (0.25 steps)	Progressive adds: +1.75 to +2.25	front-surface, center-near aspheric optics (intermediate and distance seen concurrently)	N/A	8.4
Esstech PSD Multifocal	annually	polymacon	38	I	14.0	8.3, 8.7, 9.1	-6.00 to +6.00 (0.25 steps)	Progressive adds: up to +1.50	front-surface, center-near aspheric optics (intermediate and distance seen concurrently)	N/A	8.4
Quattro	monthly, quarterly, annually	hioxifilcon B	48	I	14.2, 14.5	8.4, 8.8	-4.75 to +7.75 (0.25 steps)	Progressive adds: up to +2.50	front-surface, center-near aspheric optics (intermediate and distance seen concurrently)	N/A	15.0
California Optics											
CO Soft 55 Crescent Bifocal Custom	quarterly	methafilcon A	55	IV	14.5, 15.0	8.6, 8.9, 9.2	-10.00 to +10.00	+1.00 to +4.00	one-piece crescent design		18.8
CO Soft 55 Custom Bifocal	quarterly	methafilcon A	55	IV	14.5, 15.0	8.3, 8.6, 8.9, 9.2	-10.00 to +10.00	+1.00 to +3.50	center add concentric design	1.50, 2.00, 2.10, 3.00 for near	18.8
CO Soft 55 Custom Progressive Multifocal	quarterly	methafilcon A	55	IV	14.5, 15.0	8.3, 8.6, 8.9, 9.2	-10.00 to +10.00	+1.00 to +3.50	center-near, progressive design		18.8
CooperVision											
Biofinity Multifocal	monthly	comfilcon A	48	I	14.0	8.6	-10.00 to +6.00 (0.50 steps after -6.00)	+1.00, +1.50, +2.00, +2.50			142.0
Clariti 1 Day Multifocal	daily	somofilcon A	56	I	14.1	8.6	-6.00 to +5.00 (0.25 steps)	Low: up to +2.25; High: up to +2.50 to +3.00			86.0
Proclear Multifocal	monthly	omafilcon B	62	II	14.4	8.7	-8.00 to +6.00 (0.50 steps after -6.50)	+1.00, +1.50, +2.00, +2.50			21.3
Proclear Multifocal XR	monthly	omafilcon B	62	II	14.4	8.4, 8.7	-20.00 to +20.00 (0.50 steps after ±6.50)	+1.00, +1.50, +2.00, +2.50, +3.00, +3.50, +4.00			21.3
GP Specialists											
iSight Custom MCL	annually	methafilcon A	55	IV	13.0 to 15.5	8.0 to 9.5	-25.00 to +25.00 (0.25 steps)	+1.00 to +4.00	available as center-near or center-distance	1.80 to 3.50	28, 60, 18.8
iSight Gold Series	annually	hioxifilcon A	59	II	13.0 to 15.5	8.0 to 9.5	-25.00 to +25.00 (0.25 steps)	+1.00 to +4.00	available as center-near or center-distance	1.80 to 3.50	28, 60, 18.8
Johnson & Johnson Vision Care											
1-Day Acuvue Moist Multifocal	daily	etafilcon A	58	IV	14.3	8.4	-9.00 to +6.00 (0.25 steps)	Low: +0.75 to +1.25; Mid: +1.50 to +1.75; High: +2.00 to +2.50	center-near aspheric; adjusted for pupil variation		28.0
Acuvue Oasys for Presbyopia	biweekly	senofilcon A	38	I	14.3	8.4	-9.00 to +6.00 (0.25 steps)	Low: +0.75 to +1.25; Mid: +1.50 to +1.75; High: +2.00 to +2.50	center-distance, concentric aspheric zones		147.0
Menicon America											
Miru 1 Month Multifocal	monthly	asmofilcon A	40		14.2	8.6	-13.00 to -6.50 (0.50 steps), -6.00 to +6.00 (0.25 steps)	+1.00	center-near progressive with decentered near zone		161.0

MULTIFOCAL											
Name	Replacement Cycle	Material	H ₂ O (%)	FDA Group	Diameter (mm)	Base Curve (mm)	Sphere Power (D)	Add Power (D)	Add Type	Optic Zone (mm)	Dk
Metro Optics											
MetroFocal	quarterly	polymacon, Definitive, hioxifilcon B	38, 49, 74	I, II	14.0 (polymacon), 14.2 (Definitive/hioxifilcon B)	8.3, 8.6, 8.9 (polymacon/Definitive), 8.1, 8.4, 8.7 (hioxifilcon B)	-12.00 to +12.00	Up to +2.50	center-distance aspheric optics, progressive design	9.00	8.4, 15.0
Optical Connection											
Definition AC Multifocal	monthly	methafilcon A	55	IV	14.2	8.6	-8.00 to +6.00 (0.25 steps)	Up to +3.00	progressive design	11.00	19.5
SpecialEyes											
54 Bifocal	quarterly	hioxifilcon D	54	II	12.5 to 16.0 (0.10 steps)	6.9 to 9.5 (0.10 steps)	-25.00 to +25.00 (0.10 steps)	+1.00 to +4.00 (0.10 steps)	center-near or center-distance annular optics	8.00 to 10.00	23.0
54 Multifocal	quarterly	hioxifilcon D	54	II	12.5 to 16.0 (0.10 steps)	6.9 to 9.5 (0.10 steps)	-25.00 to +25.00 (0.10 steps)	+1.00 to +4.00 (0.10 steps)	center-near or center-distance aspheric optics	8.00 to 10.00	23.0
Unilens (Bausch + Lomb)											
C-Vue 55 Multifocal	quarterly	methafilcon A	55	IV	13.0 to 15.5	7.8 to 9.5	-20.00 to +20.00	Up to +2.50	center-near aspheric optics	varies	18.8
C-Vue Advantage Multifocal	monthly	balafilcon A	36	III	14.0	8.6	-10.00 to +6.00 (0.25 steps)	Low: up to +1.50; High: +1.75 to +2.50		9.00	91.0
C-Vue Advanced HydraVue Multifocal	monthly	efrofilcon A	74	II	12.0 to 16.0	8.0 to 9.5	-20.00 to +20.00	0.50 to 4.00		8.00	59.8
C-Vue Advanced Multifocal	quarterly	hioxifilcon D	55	II	12.5 to 17.0	7.0 to 10.5	-20.00 to +20.00	Up to +3.00		5.00 to 10.00	23.0
C-Vue HydraVue Multifocal	monthly	balafilcon A	36	III	14.0	8.6	-10.00 to +6.00	Low: up to +1.50; High: +1.75 to +2.50		8.00	91.0
C-Vue Multifocal	biweekly	polymacon	38.6	I	14.5	8.5, 8.8	-7.00 to +6.00	Low: up to +1.50; High: +1.75 to +2.50	front-surface, center-near aspheric optics	8.00	8.4
SimulVue 38	annually	polymacon	38.6	I	14.5	8.4, 8.7, 9.0	-8.00 to +6.00 (0.25 steps)	+2.00, +2.50, +3.00, +3.50	center-near concentric bifocal optics	8.00	8.4
Softsite	annually	polymacon	38	I	14.5	8.4, 8.7	-8.00 to +8.00 (0.25 steps)	+1.75 to +2.50	multiple front aspheric optics	8.00	8.4
Unilens 38	quarterly, annually	polymacon	38	I	14.5	8.4, 8.7	-8.00 to +6.00 (0.25 steps)	Up to +1.50	front-surface aspheric optics	8.00	8.4
Unilens EMA	quarterly, annually	polymacon	38.6	I	14.5	8.5, 8.8	-10.00 to +6.00 (0.25 steps)	+1.50, +1.75 to +2.50	front-surface, center-near aspheric optics	8.00	8.4
United Contact Lens											
UCL Bifocal	quarterly, annually	ocufilcon C	55	IV	14.5, 15.0	8.3, 8.6, 8.9, 9.2	-20.00 to +20.00 (0.25 steps)	+1.00 to +3.50 (0.25 steps)	center-near concentric optics	Sag. diameter: 1.70, 2.00, 2.30, 2.60, 2.90, 3.20	18.8
UCL Multifocal	quarterly, annually	ocufilcon C	55	IV	14.7	8.3, 8.7, 9.0	-20.00 to +20.00	Up to +3.00	aspheric optics, progressive design	8.00 to 10.00	18.8
Visioneering Technologies											
NaturalVue Multifocal	daily	etafilcon A	58	II	14.5	8.3	-12.25 to +4.00 (0.25 steps)	up to +3.00	extended depth of focus		19.7
X-Cel Specialty Contacts											
Horizon Bi-con Bifocal	annually	hioxifilcon B, methafilcon A, hioxifilcon A	49, 55, 59	I, II, IV	14.0 to 15.0 (1.00 steps)	8.0 to 9.2 (0.10 steps)	-20.00 to +20.00 (0.25 steps)	+0.50 to +4.00	center-near concentric optics (simultaneous vision)	varies	
Horizon Progressive	annually	hioxifilcon B, methafilcon A, hioxifilcon A	49, 55, 59	I, II, IV	14.0 to 15.0 (0.10 steps)	8.0 to 9.2 (0.10 steps)	-20.00 to +20.00	Up to +3.50 (0.25 steps)	center-near concentric optics		

Redefining vision by fusing science, art and technology designed to achieve revolutionary solutions for presbyopia, myopia and astigmatism.

NaturalVue[®] (etafilcon A) Multifocal 1 Day Contact Lenses



- Innovative Neurofocus Optics[®] Technology inspired by advanced camera optics
- One Universal Extended Depth of Focus center-distance design
- Fit like a Single Vision Sphere

See Naturally[®]

Call us today at **1-844-VTI-LENS**
(1-844-884-5367, ext. 116)
or visit **vtivision.com**

TORIC MULTIFOCAL													
Name	Replacement Cycle	Material	H ₂ O (%)	FDA Group	Diameter (mm)	Base Curve (mm)	Sphere Power (D)	Cylinder Power (D)	Axes	Add Power (D)	Add Type	Optic Zone (mm)	Dk
ABB Optical													
Concise Toric Multifocal	quarterly	polymacon	38	I	14.5	8.4, 8.6	-2.00 to +4.00 (0.25 steps)	-3.00 to -0.75 (0.25 steps)	0° to 180° (1° steps)	-0.50 to +3.00 (0.25 steps)			9.0
Concise Toric Multifocal MTO	quarterly	polymacon	38	I	13.0 to 16.0 (0.10 steps)	7.8 to 10.0 (0.10 steps)	-20.00 to +20.00 (0.25 steps)	-8.00 to -0.50 (0.25 steps)	0° to 180° (1° steps)	+0.50 to +3.50 (0.25 steps)			9.0
Definitive MTO Multifocal Toric	quarterly	efofilcon A	74	II	13.5 to 15.5 (0.10 steps)	7.5 to 9.6 (0.30 steps)	-20.00 to +10.00 (0.25 steps)	-4.50 to -3.00 (0.25 steps)	0° to 100° (1° steps)	Low: up to +2.25; High: up to +2.75			60.0
Definitive Multifocal Toric	quarterly	efofilcon A	74	II	14.2, 14.5	8.4, 8.7, 9.0	-10.00 to +10.00 (0.25 steps)	-2.75 to -0.25 (0.25 steps)	0° to 180° (1° steps)	Low: up to +2.25; High: up to +2.75			60.0
Ocu-Flex-53 Toric Multifocal	quarterly	ocufilcon B	53	IV	14.5	8.4, 8.6	-7.00 to +4.00 (0.25 steps)	-3.00 to -0.75 (0.25 steps)	any	Up to +2.25; Low: up to +3.50	high aspheric center add	1.90, 2.18	18.0
Alden Optical (Bausch + Lomb)													
Astera Multifocal Toric	monthly, quarterly, annually	hioxifilcon D	54	II	10.0 to 16.0 (14.5 std.)	6.5 to 9.7 (8.3, 8.6, 8.9 std.)	-30.00 to +30.00 (0.25 steps)	-10.00 to -0.50 (0.25 steps)	Any (1° steps)	Profile 1: ≤+1.50; Profile 2: >+1.75 to +2.25; Profile 3: ≥+2.50		8.00	21.0
Art Optical Contact Lens													
Intelliwave Multifocal Quarterly Replacement	quarterly	efofilcon A	74	II		MTO	-20.00 to +20.00 (0.25 steps)			Up to +4.00 center near simultaneous		8.40	60.0
Intelliwave Multifocal Semi-Annual Replacement	semi-annually	acofilcon A, hioxifilcon B	48	I, II		MTO	-20.00 to +20.00 (0.25 steps)			Up to +4.00 center near simultaneous		8.40	16.0
Bausch + Lomb													
Ultra Multifocal for Astigmatism	monthly	samfilcon A	46	I	14.5	8.6	-6.00 to +4.00 (0.25 steps)	-0.75, -1.25, -1.75	10° to 180° (10° steps)	Low: +0.75 to +1.50; High: +1.75 to +2.50	3-zone progressive design	8.50	114.0
Blanchard Contact Lens													
Essential Soft Toric Multifocal	annually	hioxifilcon B	48	I	14.2, 14.4, 14.8	8.2, 8.5, 8.8	-6.00 to +9.00 (0.25 steps)	-3.00 to -0.75 (0.25 steps)	90° ±30° (1° steps), 180° ±30° (1° steps)	Progressive adds: up to +2.50	center-near aspheric, progressive		15.0
California Optics													
CO Soft 55 Custom Bifocal Toric	quarterly	methafilcon A	55	IV	14.5, 15.0	8.3, 8.6, 8.9, 9.2	-10.00 to +10.00	-5.00 to -0.75		+1.00 to +3.50	center-near concentric	1.50, 2.00, 2.10, 3.00 for near	18.8
CO Soft 55 Toric Crescent Bifocal Custom	quarterly	methafilcon A	55	IV	14.5, 15.0	8.6, 8.9, 9.2	-10.00 to +10.00	-5.00 to -0.75	any	+1.00 to +4.00	one-piece crescent	varies	18.8
CO Soft 55 Toric Custom Progressive Multifocal	quarterly	methafilcon A	55	IV	14.5, 15.0	8.3, 8.6, 8.9, 9.2	-10.00 to +10.00	-5.00 to -0.75	any	+1.00 to +3.50	center-near progressive	varies	18.8
CooperVision													
Proclear Multifocal Toric	monthly	omafilcon B	62	II	14.4	8.4, 8.8	-20.00 to +20.00 (0.50 steps after ±6.50)	-5.75 to -0.75 (0.50 steps)	5° to 180° (5° steps)	+1.00 to +4.00 (0.50 steps)			48.6

TORIC MULTIFOCAL

Name	Replacement Cycle	Material	H ₂ O (%)	FDA Group	Diameter (mm)	Base Curve (mm)	Sphere Power (D)	Cylinder Power (D)	Axes	Add Power (D)	Add Type	Optic Zone (mm)	Dk
GelFlex USA													
Triton Soft Translating Bifocal	monthly, quarterly, annually	hioxifilcon B	49	I	15.0/13.4, 14.5/13.4	8.0, 8.2, 8.4, 8.6, 8.8, 9.0, 9.2	any	any	any (1° steps)	any		varies	15.0
Metro Optics													
MetroFocal Toric	monthly, quarterly, annually	polymacon, Definitive, hioxifilcon B	38, 49, 74	I, II	14.0 (polymacon), 14.2 (Definitive/hioxifilcon B)	8.3, 8.6, 8.9 (polymacon/Definitive), 8.1, 8.4, 8.7 (hioxifilcon B)	-12.00 to +12.00	-8.00 to -0.75	5° to 180° (5° steps)	Up to +2.50	center-distance aspheric, progressive design	9.00	8.4
SpecialEyes													
54 Bifocal Toric	quarterly	hioxifilcon D	54	II	12.5 to 16.0 (0.10 steps)	6.9 to 9.5 (0.10 steps)	-25.00 to +25.00 (0.10 steps)	-8.00 to -0.50 (0.10 steps)	1° to 180° (1° steps)	+1.00 to +4.00 (0.10 steps)	center-near or center-distance concentric annular optics	8.00 to 10.00; custom distance and near	23.0
54 Multifocal Toric	quarterly	hioxifilcon D	54	II	12.5 to 16.0 (0.10 steps)	6.9 to 9.5 (0.10 steps)	-25.00 to +25.00 (0.10 steps)	-8.00 to -0.50 (0.10 steps)	1° to 180° (1° steps)	+1.00 to +4.00 (0.10 steps)	center-near or center-distance aspheric optics	8.00 to 10.00; custom distance and near	23.0
Unilens (Bausch + Lomb)													
C-Vue 55 Toric Multifocal	quarterly	methafilcon A	55	IV	13.5 to 15.5	7.8 to 9.5	-20.00 to +20.00	-4.00 to -0.25	0° to 180° (1° steps)	Up to +3.00	aspheric	8.00	18.8
C-Vue Advanced HydraVue Toric Multifocal	monthly	efrofilcon A	74	II	12.0 to 16.0	8.0 to 9.5	-20.00 to +20.00 (0.25 steps)	-4.00 to -0.25	Any (1° steps)	0.50 to 4.00		8.00	59.8
C-Vue Advanced Toric Multifocal	monthly	hioxifilcon D	54	II	12.5 to 17.0	7.0 to 10.5	-20.00 to +20.00	Up to 4.00	0° to 180° (1° steps)	Up to +3.00		5.00 to 10.00	23.0
United Contact Lens													
UCL Bifocal Toric	quarterly, annually	ocufilcon C	55	IV	14.5 to 15.0	8.3, 8.6, 8.9, 9.2	-20.00 to +20.00 (0.25 steps)	-3.00 to -1.00	Any	+1.00 to +3.50 (0.25 steps)	center-near concentric	8.00, sag. diameter: 1.70, 2.00, 2.30, 2.60, 2.90, 3.20	10.3
UCL Multi Toric	quarterly, annually	ocufilcon C	55	IV	14.7, 15.2	8.3, 8.7, 9.0	-20.00 to +20.00 (0.25 steps)	-3.00 to -1.00	Any	Up to +3.00	aspheric	8.00	10.3
X-Cel Specialty Contacts													
Horizon Bi-Con Toric	annually	hioxifilcon B, methafilcon A, hioxifilcon A	49, 55, 59	I, II, IV	14.0 to 15.0 (0.10 steps)	8.0 to 9.2 (0.10 steps)	-20.00 to +20.00 (0.25 steps)	-10.00 to -0.50 (0.25 steps)	1° to 180° (1° steps)	+0.50 to +4.00 concentric with near in center, simultaneous vision	center-near concentric optics	Center zone: 1.80, 2.00, 2.50, 3.00, 3.50, 4.00	
Horizon Progressive Toric	annually	hioxifilcon B, methafilcon A, hioxifilcon A	49, 55, 59	I, II, IV	14.0 to 15.0 (0.10 steps)	8.0 to 9.2 (0.10 steps)	-20.00 to +20.00	-5.00 to -0.75	1° to 180° (1° steps)	Up to +3.50 (0.25 steps)	+1.00 to +3.50, progressive design	8.00	

APHAKIC									
Name	Replacement Cycle	Material	H ₂ O (%)	FDA Group	Diameter (mm)	Base Curve (mm)	Sphere Power (D)	Optic Zone (mm)	Dk
ABB Optical									
Ocu-Flex-53 Custom	quarterly	ocufilcon B	53	IV	10.0 to 15.5	8.2, 8.4, 8.6, 8.8	+10.25 to +20.00	varies	18.0
Ocu-Flex-53 Pediatric	monthly	ocufilcon B	53	IV	8.0 to 15.0	6.0 to 8.6 (0.10 steps)	-40.00 to +40.00	varies	18.0
Bausch + Lomb									
Silsoft (Adult)	unspecified	elastofilcon A	0.2	I	11.3 to 12.5	7.5, 7.7, 7.9, 8.1, 8.3	+7.00 to +35.00	7.00	340.0
Silsoft Super Plus (Pediatric)	unspecified	elastofilcon A	0.2	I	11.3 to 12.5	7.5, 7.7, 7.9	+7.00 to +35.00	7.00	340.0
SofLens Daily Disposable	unspecified	hilafilcon B	59	II	14.2	8.6	-20.00 to +20.00	9.00	24.0
California Optics									
CO Soft 55 Sphere Aphakic	quarterly	methafilcon B	55	IV	14.5, 15.0	8.3, 8.6, 8.9, 9.2	+10.50 to +30.00	7.50 to 8.00	18.8
CooperVision									
Hydrasoft Aphakic	quarterly	methafilcon B	55	IV	14.2, 15.0	8.3, 8.6, 9.2	+10.25 to +30.00 (0.25 steps)	8.00, 8.50	18.8 for dia. 14.2, 15.7 for dia. 15.0
Hydrasoft Aphakic Thin	quarterly	methafilcon B	55	IV	14.2, 15.0	8.3, 8.6, 9.2	+10.25 to +30.00 (0.25 steps)	8.00, 8.50	18.8 for dia. 14.2, 15.7 for dia. 15.1
GP Specialists									
iSight DW Custom Aphakic	annually	methafilcon A	55	IV	8.0 to 9.5	13.0 to 15.5	+10.25 to +25.00 (0.25 steps)	varies	28.0
iSight DW Gold Series	annually	hioxifilcon A	59	II	8.0 to 9.5	13.0 to 15.5	+10.25 to +25.00 (0.25 steps)	varies	28.0
Kontur Kontakt Lens									
Kontur 55 Aphakic	annually	methafilcon A	55	IV	15.0	8.3, 8.6, 8.9	+10.00 to +20.00	8.00	18.8
Unilens (Bausch + Lomb)									
Sof-Form 55 Aphakic	annually	methafilcon A	55	IV	14.0, 15.0	8.3, 8.6, 8.9	+10.00 to +20.00 (0.25 steps)	7.50	18.8
X-Cel Specialty Contacts									
Flexlens Aphakic	unspecified	hefilcon A	45	I	10.0 to 16.0 (0.10 steps)	6.0 to 11.0 (0.10 steps)	Plano to +50.00	varies	11.3

HYBRID											
<i>Soft lens outer ring with GP center optic</i>											
Name	Replacement Cycle	Material	H ₂ O (%)	FDA Group	Diameter (mm)	GP Base Curve (mm)	Skirt Curve	Sphere Power (D)	Cylinder Power (D)	Add Type/ Power (D)	Dk
SynergEyes											
Duette	semi-annually	petrafocon A, hemlarafilcon A	27	II	14.5	7.1 to 8.3 (0.10 steps)	8.7, 8.4, 8.1	-15.00 to -8.50 (0.50 steps), +8.50 to +10.00 (0.50 steps), -8.00 to +8.00 (0.25 steps), -15.00 to +10.00			130.0
SynergEyes A	semi-annually	paflucocon D, hemiberfilcon A	27	II	14.5	7.0 to 8.2 (0.10 steps)	1.0 and 1.3 flatter than base	-20.00 to +20.00			100.0
Duette Multifocal	semi-annually	petrafocon A, hemlarafilcon A	27	II	14.5	7.1 to 8.3 (0.20 steps)	8.7, 8.4, 8.1, 7.9	-10.00 to +5.50		single progressive add zone (small, large)	130.0
Duette Progressive	semi-annually	petrafocon A, hemlarafilcon A	27	II	14.5	7.1 to 8.3 (0.10 steps)	8.7, 8.4, 8.1	-10.00 to +5.50, -10.00 to -8.50 (0.50 steps), -8.00 to +5.50 (0.25 steps)		center near (+1.00, +1.75, +2.50) or center distance (+0.75 to +5.00)	130.0
SynergEyes Multifocal	semi-annually	hemiberfilcon A	27	II	14.5	7.0 to 8.2 (0.10 steps)	1.0 and 1.3 flatter than base	-20.00 to +5.00		+0.75, +1.25, +1.75, +2.25	100.0
ClearKone	semi-annually	paflucocon D, hemiberfilcon A	27	II	14.5	50 to 700 (50µ steps)	flat, medium, steep, steep2	-20.00 to +10.00	+0.50 to +6.00		100.0
SynergEyes PS	semi-annually	hemiberfilcon A	27	II	14.5	7.2 to 9.0 (0.20 steps)	8.3mm or 8.6mm	-20.00 to +6.00			100.0
SynergEyes KC	semi-annually	hemiberfilcon A	27	II	14.5	5.3 to 7.1 (0.20 steps)	flat, medium, steep	-20.00 to +8.00 (0.50 steps)	+0.50 to +6.00		100.0
UltraHealth	semi-annually	hemlarafilcon A	32	II	14.5	50 to 550 (50µ steps)	8.7, 8.4, 8.1, 7.9	-20.00 to +10.00, -20.00 to -8.50 (0.50 steps), +2.50 to +10.00 (0.50 steps), -8.00 to +2.00 (0.25 steps)			130.0
UltraHealth FC	semi-annually	hemlarafilcon A	27	II	14.5	55 to 505 (50µ steps)	8.4, 8.1, 7.9	-20.00 to +10.00, -20.00 to -8.50 (-0.50 steps), -8.00 to +2.00 (0.25 steps), +2.50 to +10.00 (0.50 steps)			130.0

Color-enhancing and color-changing lenses

COSMETIC

Name	Replacement Cycle	Material	H ₂ O (%)	FDA Group	Diameter (mm)	Base Curve (mm)	Sphere Power (D)	Optic Zone (mm)	Dk	Colors
ABB Optical										
Concise Colors	unspecified	polymacon, methafilcon A, Definitive	38, 55, 74	I, IV	12.5 to 17.5 (0.1 steps)	8.0 to 9.3 (0.1 steps)	-20.00 to +20.00			aqua, blue, green, baby blue, blue gray, Caribbean, turquoise, lavender, evergreen, pistachio, stormy gray, granite, honey, chestnut, pecan, dark cocoa
Alcon										
Air Optix Colors	monthly	lotrafilcon B	33	I	14.2	8.6	-6.50 to +8.00 (0.50 steps) -6.00 to +6.00 (0.25 steps)		138.0	pure hazel, blue, green, gray, brown, honey, brilliant blue, gemstone green, sterling gray
Dailies Colors	daily	nelfilcon A	69	I		median	-8.00 to -6.50 (0.50 steps), -6.00 to -0.50 (0.25 steps), plano			mystic blue, mystic gray, mystic hazel, mystic green
FreshLook ColorBlends	biweekly	phemfilcon A	55	IV	14.5	median	-8.00 to -6.50 (0.50 steps), -6.00 to +2.00 (0.25 steps), +2.50 to +6.00 (0.50 steps)	9.00 (5.00 clear pupil zone)	20.0	pure hazel, blue, green, gray, brown, honey, brilliant blue, gemstone green, sterling gray, turquoise, amethyst, true sapphire
FreshLook Colors	biweekly	phemfilcon A	55	IV	14.5	median	-8.00 to -6.50 (0.50 steps), -6.00 to +2.00 (0.25 steps), +2.50 to +6.00 (0.50 steps)	9.00 (5.00 clear pupil zone)	20.0	hazel, blue, green, violet
FreshLook Dimensions	biweekly	phemfilcon A	55	IV	14.5	median	-8.00 to -6.50 (0.50 steps), -6.00 to +2.00 (0.25 steps), +2.50 to +6.00 (0.50 steps)	9.00 (5.00 clear pupil zone)	20.0	caribbean aqua, pacific blue, sea green
FreshLook One-Day	daily	nelfilcon A	69	II	13.8	8.6	-8.00 to -6.50 (0.50 steps), -6.00 to -0.50 (0.25 steps), plano		26.0	pure hazel, blue, green, gray
Alden (Bausch + Lomb)										
Alden Classic Tinted Spheres	unspecified	polymacon	38	I	14.5, 15.0	8.3, 8.6, 8.9	-30.00 to +30.00	varies	8.4	aqua, azure, blue, brown, gray, green, jade, yellow, walnut (all colors are available in three saturations: #1-light, #2-medium, #3-dark)
Alden Classic Tinted Toric	unspecified	polymacon	38	I	14.5, 15.0	8.3, 8.6, 8.9	-30.00 to +30.00	varies	8.4	
Alden Classic Toric	unspecified	polymacon	38	I	13.0, 13.5, 14.0, 14.5, 15.0	7.7, 7.9, 8.1, 8.3, 8.5, 8.7, 8.9	-30.00 to +30.00	varies	8.4	
Alden HP Spheres	unspecified	hioxifilcon B	49	I	14.5, 15.0	8.3, 8.6, 8.9	-30.00 to +30.00	varies	14.5	
Alden HP Toric	unspecified	hioxifilcon B	49	I	14.5, 15.0	8.3, 8.6, 8.9	-30.00 to +30.00	varies	15.0	
Alden HP Toric	unspecified	hioxifilcon B	49	I	14.5, 15.0	8.3, 8.6, 8.9	-20.00 to +20.00, -10.25 to +10.25	8.50	15.0	
CooperVision										
Expressions Colors*	monthly	methafilcon A	55	IV	14.4	8.7	-6.00 to +4.00 (0.25 steps)	varies	37.6	jade, blue topaz, aqua, blue, green, gray, hazel, brown
Gelflex										
Sofclear Enhance	unspecified	methafilcon A	55	IV	14.3	8.6	-6.00 to plano		37.6	aqua, royal blue, evergreen, neon green
Sofclear Colors	unspecified	methafilcon A	55	IV	14.2	8.6	-8.00 to plano		37.6	blue, sapphire blue, turquoise, gray, green, dark green, pure hazel, brown, honey, violet
Sofclear Retro	unspecified	methafilcon A	55	IV	14.2	8.6	-8.00 to plano		37.6	gray, blue, brown, green, turquoise
Johnson & Johnson Vision Care										
1-Day Acuvue Define	daily	etafilcon A	58	IV	14.0 to 16.0	8.5	-9.00 to -6.50 (0.50 steps), -6.00 to -0.25 (0.25 steps), plano to +1.00 (+0.50 steps)		21.4, 28.0	natural shimmer, natural shine, natural sparkle, accent, vivid
Metro Optics										
MetroTint	quarterly	polymacon	38	I	13.5	8.3, 8.6, 8.9	-12.00 to +12.00	9.00	8.4	aqua, blue, green
Orion Vision Group										
BioColors	annually	polymacon, methafilcon A	38, 55	I, IV	13.0 to 22.0 (0.10 steps)	7.7 to 9.5 (0.10 steps)	-20.00 to +20.00 (0.25 steps)	varies		aqua, blue, green, baby blue, blue gray, Caribbean, turquoise, lavender, evergreen, pistachio, stormy gray, granite, honey, chestnut, pecan, dark cocoa
United Contact Lens										
UCL 55%	unspecified	ocufilcon C	55	IV	14.0, 14.5, 15.0	8.3, 8.6, 8.9, 9.2	-20.00 to +20.00 (0.50 steps after ±9.00)	8.00 to 8.50	18.8	green, blue, aqua, amber, brown, red, yellow
UCL Tresoft	unspecified	ocufilcon A	46	III	14.0, 14.5	8.2, 8.5, 8.8	-20.00 to +20.00	8.00 to 8.50	10.3	
X-Cel Specialty Contacts										
Toricolors Sphere	unspecified	hioxifilcon D	54	II	14.2	8.6	-4.00 to plano (0.50 steps after -3.00)		21.0	seabreeze blue, emerald green, golden amber, horizon gray

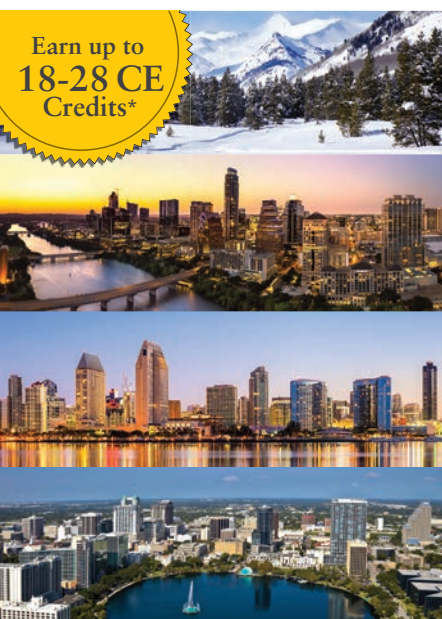
*To be discontinued Nov. 2019

THERAPEUTIC			Prosthetic designs and lenses for keratoconic or highly irregular corneas									
Name	Replacement Cycle	Material	H ₂ O (%)	FDA Group	Diameter (mm)	Base Curve (mm)	Sphere Power (D)	Cylinder Power (D)	Optic Zone (mm)	Dk	Colors	
ABB Optical												
Concise Colors	unspecified	polymacon, methafilcon A, Definitive	38, 55, 74	I, IV	12.5 to 17.5 (0.1 steps)	8.0 to 9.3 (0.1 steps)	-20.00 to +20.00				aqua, blue, green, baby blue, blue gray, Caribbean, turquoise, lavender, evergreen, pistachio, stormy gray, granite, honey, chestnut, pecan, dark cocoa; four underprint shades, one occluded pupil	
Concise K	quarterly	polymacon	38	I	14.5, 15.0	8.6	-20.00 to -8.50 (0.5 steps), -8.00 to plano (0.25 steps)	sag depths in four sizes				
Concise K MTO	quarterly	methafilcon A, polymacon	55, 38	custom parameters available outside those listed for Concise K								
Ocu-Flex-53 Bandage Lens	unspecified	ocufilcon B	53	IV	22.0	10.2	-10.00 to +10.00			18.0		
Ocu-Flex-53 Keratoconus	unspecified	polymacon	38	IV	14.5	8.4, 8.6	-40.00 to +40.00		6.10 to 9.45	15.0		
Rosek2 Soft	quarterly	efofilcon A	74	II	14.3 to 15.3	7.4 to 9.0	-30.00 to +30.00 (0.25 steps)			60.0		
Advanced Vision Technologies												
NaturaSoft	quarterly	efofilcon A	74	II	15.0 to 22.0	fully customizable sphere, cyl and add powers				60.0		
NaturaSoft IC and ICR	quarterly	efofilcon A	74	II	15.0 to 22.0	Fully customizable sphere, cyl and add powers. Designed for irregular corneas, with a thicker central optical zone and a fitting curve throughout the mid periphery.				60.0		
Soft K II	quarterly	efofilcon A	74	II	14.2, 14.8	7.0, 7.3, 7.6, 7.9, 8.2	-20.00 to +10.00 (0.25 steps)	up to -4.50	8.3	60.0		
Alden (Bausch + Lomb)												
Alden Classic Prosthetic	daily, bimonthly, quarterly	polymacon	38	I	14.5, 15.0	8.3, 8.6, 8.9			varies	8.4		
Alden HP Prosthetic	daily, bimonthly, quarterly	hioxifilcon B	49	I	14.5, 15.0	8.3, 8.6, 8.9	-10.00 to +10.00		varies	15.0	walnut (five shades) black pupil opaque (dia. 2-13mm), annular black (dia. 5-13mm) with clear pupil (dia. 2-8mm)	
Alden HP Prosthetic Toric	daily, bimonthly, quarterly	hioxifilcon B	49	I	14.5, 15.0	8.3, 8.6, 8.9	-30.00 to +30.00	-10.00 to -0.25	varies	15.0		
NovaKone	monthly, quarterly, annually	hioxifilcon D	54	II	10.0 to 16.0 (15.0 std.)	5.4 to 8.8 (5.4, 5.8, 6.2, 6.6, 7.0, 7.4, 7.8, 8.2, 8.6 std.)	-30.00 to +30.00 (0.25 steps)	-10.00 to plano (0.25 steps)	8.60, custom	21.0		
California Optics												
CO Soft 55 Custom Sphere	quarterly	methafilcon A	55	IV	13.0, 15.0, 16.0, 18.0, 20.0, 25.0	7.5, 8.3, 8.6, 8.9, 9.2, 9.6, 10.5	-30.00 to +30.00		7.00 to 9.50	18.6		
Cantor + Nissel												
Cantor Prosthetic	unspecified	Contaflex filcon I	38		13.00, 13.50, 14.00, 14.50, 15.00	8.00 to 9.40 (0.1 steps)	-30.00 to +30.00 (0.25 steps)	-6.00 to -0.75 (0.25 steps)		7.9	10 colors available; clear-backed option to allow iris to show through or occlusive back to mask iris	
Nissel Custom Prosthetic	unspecified	Contaflex filcon II	77		11.0 to 22.0 (0.5 steps)	6.60 to 10.40 (0.2 steps)	-30.00 to +30.00 (0.25 steps)	-6.00 to -0.75 (0.25 steps)		45.0	iris enhanced to match digital images, with clear or black pupils and opaque backing	
Custom Color Contacts												
Custom Made Prosthetic Lenses	unspecified	polymacon	38	I	15.0	8.3, 8.6, 8.9, custom	-20.00 to +20.00			9.0	Any iris coloring, including opaque pupils or novelty designs, can be ordered.	
GP Specialists												
YamaKone IC	quarterly	hioxifilcon A	59	II	14.0 to 16.0	6.0 to 9.5 (0.1 steps)	-30.00 to +30.00 (0.25 steps)	-8.50 to -0.50 (0.25 steps)	6.00 to 9.00			
Metro Optics												
KeraSoft IC	quarterly	silicone hydrogel	74	IV	14.5	7.8, 8.0, 8.2, 8.4, 8.6, 8.8 standard, 8.2 flat 2, 8.6 steep2	-20.00 to +20.00	-12.00 to -0.50	8.00	60		

Prosthetic designs and lenses for keratoconic or highly irregular corneas

THERAPEUTIC

Name	Replacement Cycle	Material	H ₂ O (%)	FDA Group	Diameter (mm)	Base Curve (mm)	Sphere Power (D)	Cylinder Power (D)	Optic Zone (mm)	Dk	Colors
Orion Vision Group											
BioSport	annually	polymacon, methafilcon	38, 55	I, IV	13.0 to 22.0	7.7 to 9.5	-20.00 to +20.00	up to -10.00 (in 0.25 steps)	varies		amber, green, blue, sun tac, gray green, yellow
BioMed	annually	hioxifilcon, methafilcon A	49, 55	I, IV	up to 16.0	7.0 to 9.5	-30.00 to +30.00 (in 0.25 steps)	up to -10.00 (in 0.25 steps)	varies		lavender, migraine, blue blocker, cobolt, teal, red
Prosthetic Soft	annually	polymacon, methafilcon A	38, 55	I, IV	13.0 to 22.0	7.7 to 9.5	-20.00 to +20.00	up to -10.00 (in 0.25 steps)	varies		aqua, blue, green, baby blue, blue gray, Caribbean, turquoise, lavender, evergreen, pistachio, stormy gray, granite, honey, chestnut, pecan, dark cocoa; also four underprint shades (black, pecan, stormy, granite) and occluded pupils from 3.0mm to 12.0mm
Visionary Optics											
HydroKone	unspecified	methafilcon A, hioxifilcon A	55, 59	I, II	12.0 to 17.0	4.1 to 9.33	-75.00 to +50.00 (0.25 steps)	-15.00 to -0.25 (0.25 steps)	varies	18, 24	
RevEyes	unspecified	methafilcon A, hioxifilcon A	55, 59	I, II	12.0 to 17.0	7.0 to 22.0	-75.00 to +50.00 (0.25 steps)	-15.00 to -0.25 (0.25 steps)	varies	18, 24	
X-Cel Specialty Contacts											
Flexlens Piggyback	monthly, quarterly	hioxifilcon B	45	I	10.0 to 16.0 (0.10 steps)	6.0 to 11.0 (0.10 steps)	Plano (anterior cutout: 6.5 to 12.5)		varies	13.2	
Flexlens ARC	semi-annually, annually	efrofilcon A	74	II	13.0 to 16.0 (0.5 steps)	6.0 to 8.7 (0.1 steps)	-20.00 to +20.00 (0.25 steps)	-10.00 to -0.75	varies	60	
Flexlens Large Diameter	monthly, quarterly	methafilcon A	55	IV	16.1 to 24.0 (0.10 steps)	7.0 to 11.0 (0.10 steps)	-30.00 to +30.00		7.0 - 11.0 (0.1 steps)	18.8	
Flexlens Post Refractive Surgery	monthly, quarterly	hefilcon A, hioxifilcon B, acofilcon A, hioxifilcon A, methafilcon A, efrofilcon A	45, 49, 58, 59, 55, 74	I, II, IV	10.0 to 16.0 (0.10 steps)	6.0 to 11.0 (0.10 steps)	-30.00 to +30.00 (0.25 steps)		6.0 - 11.0 (0.1 steps)		
Flexlens Tri-Curve Keratoconus	monthly, quarterly	efrofilcon A	74	II	10.0 to 16.0 (0.10 steps)	6.0 to 11.0 (0.10 steps)	-30.00 to +30.00 (0.25 steps)		varies	60	



Earn up to 18-28 CE Credits*

Join us for our **2020 MEETINGS**

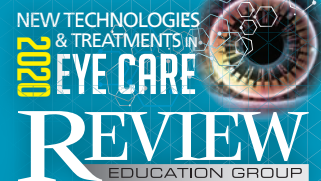
FEBRUARY 14-17, 2020 - ASPEN, CO
 Annual Winter Ophthalmic Conference
 Westin Snowmass Conference Center
 Program Co-chairs: Murray Fingeret, OD, FFAO and Leo P. Semes, OD, FACMO, FFAO
REGISTER ONLINE: www.SkiVision.com

APRIL 16-19, 2020 - AUSTIN, TX**
 Joint Meeting with OCCRS
 Omni Barton Creek
 Program Chair: Paul M. Karpecki, OD, FFAO
REGISTER ONLINE: www.reviewscce.com/Austin2020

MAY 29-31, 2020 - SAN DIEGO, CA
 Manchester Grand Hyatt
 Program Chair: Paul M. Karpecki, OD, FFAO
REGISTER ONLINE: www.reviewscce.com/SanDiego2020

JUNE 5-7, 2020 - ORLANDO, FL
 Disney Yacht & Beach Club
 Program Chair: Paul M. Karpecki, OD, FFAO
REGISTER ONLINE: www.reviewscce.com/Orlando2020

NOVEMBER 6-8, 2020 - PHILADELPHIA, PA
 Philadelphia Marriott Downtown
 Program Chair: Paul M. Karpecki, OD, FFAO
REGISTER ONLINE: www.reviewscce.com/Philadelphia2020



Visit our website for the latest information: www.reviewscce.com/events
 e-mail: reviewmeetings@jhihealth.com or call: 866-658-1772

MATERIALS

Name	Class	Dk	Colors	Manufacturer
Accucon	Fluorosilicone acrylate	25.0	clear, blue, dark blue, green, gray, brown	Innovision
	Fluorosilicone acrylate	25.0	clear, blue, dark blue, green, gray, brown	X-Cel Specialty Contacts
Acuity 100	Fluorosilicone acrylate	111.0	ice blue, blue, green, violet	Art Optical Contact Lens
	Fluorosilicone acrylate	100.0	blue, clear	Blanchard Contact Lens
Acuity 18	Fluorosilicone acrylate	21.0	ice blue, blue, green, gray	Art Optical Contact Lens
	Fluorosilicone acrylate	18.0	blue	Blanchard Contact Lens
Acuity 58	Fluorosilicone acrylate	58.0	blue, green	Blanchard Contact Lens
Acuity 85	Fluorosilicone acrylate	85.0	blue, green	Blanchard Contact Lens
Alberta 45		45.0	ice blue, dark blue	X-Cel Specialty Contacts
Alberta 66		66.0	clear, blue	X-Cel Specialty Contacts
Bionite		175.0	blue	ABB Optical
Boston Envision		58.0	BEO blue	Blanchard Contact Lens
Boston EO	fluorosilicone acrylate	58.0	blue, ice blue, electric blue, green, brown, gray	ABB Optical
	fluorosilicone acrylate	58.0	blue, ice blue, green, gray, brown, electric blue, ice green	Bausch + Lomb
	fluorosilicone acrylate	58.0	blue, green, brown, gray, ice blue, electric blue	Blanchard Contact Lens
	fluorosilicone acrylate	58.0	blue, electric blue, green, gray, ice blue, brown	X-Cel Specialty Contacts
Boston EO Envision	fluorosilicone acrylate	32.0	blue	ABB Optical
	fluorosilicone acrylate	58.0	blue	Bausch + Lomb
Boston Equalens	fluorosilicone acrylate	47.0	blue	Bausch + Lomb
	fluorosilicone acrylate	47.0	blue	Blanchard Contact Lens
Boston Equalens II	fluorosilicone acrylate	55.0	blue	ABB Optical
	fluorosilicone acrylate	115.0	blue	ABB Optical
	fluorosilicone acrylate	85.0	clear, blue, green, yellow, red	Bausch + Lomb
	fluorosilicone acrylate	85.0	blue, green, red, yellow	Blanchard Contact Lens
	fluorosilicone acrylate	47.0	blue	X-Cel Specialty Contacts
	fluorosilicone acrylate	85.0	red, yellow, blue	X-Cel Specialty Contacts
Boston ES	fluorosilicone acrylate	27.0	clear, blue, ice blue, green, brown, gray	ABB Optical
	fluorosilicone acrylate	18.0	clear, blue, ice blue, green, gray, brown	Bausch + Lomb
	fluorosilicone acrylate	18.0	blue, green, brown, gray, ice blue, clear	Blanchard Contact Lens
	fluorosilicone acrylate	18.0	blue, green, gray, ice blue, brown	X-Cel Specialty Contacts
Boston II	silicone acrylate	16.0	blue	ABB Optical
	silicone acrylate	12.0	blue	Bausch + Lomb
	silicone acrylate	12.0	blue	Blanchard Contact Lens
	silicone acrylate	12.0	blue	X-Cel Specialty Contacts
Boston IV	silicone acrylate	21.0	blue	ABB Optical
	silicone acrylate	19.0	blue	Bausch + Lomb
	silicone acrylate	19.0	blue, clear	Blanchard Contact Lens
	silicone acrylate	19.0	blue	X-Cel Specialty Contacts
Boston XO	fluorosilicone acrylate	100.0	blue, ice blue, green, violet	ABB Optical
	fluorosilicone acrylate	100.0	clear, blue, ice blue, green, violet, yellow, red	Bausch + Lomb
	fluorosilicone acrylate	100.0	blue, green, ice blue, violet, yellow	Blanchard Contact Lens
	fluorosilicone acrylate	100.0	blue, green, ice blue, violet	X-Cel Specialty Contacts

MATERIALS

Name	Class	Dk	Colors	Manufacturer
Boston XO 17mm	fluorosilicone acrylate	100.0	ice blue	X-Cel Specialty Contacts
Boston XO2	fluorosilicone acrylate	141.0	clear, blue, ice blue, green	ABB Optical
	fluorosilicone acrylate	100.0	clear, blue, ice blue, green, violet, yellow, red	Bausch + Lomb
	fluorosilicone acrylate	141.0	clear, blue, ice blue, green, violet, yellow, red	Bausch + Lomb
	fluorosilicone acrylate	141.0	blue, green, ice blue, violet	Blanchard Contact Lens
	fluorosilicone acrylate	141.0	blue, green, ice blue, violet	X-Cel Specialty Contacts
Boston XO2 17mm	fluorosilicone acrylate	141.0	ice blue, clear	X-Cel Specialty Contacts
Flosi	fluorosilicone acrylate	26.0	clear, blue, dark blue, green, dark green, violet, brown, gray	ABB Optical
	fluorosilicone acrylate	26.0	blue, green, gray	Blanchard Contact Lens
	fluorosilicone acrylate	26.0	clear, violet, light/medium/dark blue, gray, green, brown	Lagado Corporation
	fluorosilicone acrylate	26.0	blue, extra dark blue, green, extra dark forest green	X-Cel Specialty Contacts
Fluorex 300	fluorosilicone acrylate	30.0	clear, blue, aqua, green, rose brown, rose brown UV, gray	ABB Optical
	fluorosilicone acrylate	30.0	blue, green, aqua, clear, gray, rose brown	G.T. Laboratories
	fluorosilicone acrylate	30.0	clear, aqua, blue, green, gray	X-Cel Specialty Contacts
Fluorex 500	fluorosilicone acrylate	50.0	clear, blue, aqua, green, rose brown, gray	ABB Optical
	fluorosilicone acrylate	50.0	blue, green, aqua, clear, gray, rose brown	G.T. Laboratories
	fluorosilicone acrylate	50.0	clear, blue, green aqua, gray	X-Cel Specialty Contacts
Fluorex 700	fluorosilicone acrylate	70.0	clear, rose brown, gray	ABB Optical
	fluorosilicone acrylate	70.0	blue, green, aqua, clear, gray, rose brown	G.T. Laboratories
	fluorosilicone acrylate	70.0	clear, gray	X-Cel Specialty Contacts
FluoroPerm 151	fluorosilicone acrylate	151.0	blue	Art Optical Contact Lens
	fluorosilicone acrylate	151.0	blue	X-Cel Specialty Contacts
FluoroPerm 30	fluorosilicone acrylate	30.0	clear, blue, majestic blue, crystal blue, green, gray	ABB Optical
	fluorosilicone acrylate	30.0	blue, green, gray, clear	Blanchard Contact Lens
	fluorosilicone acrylate	30.0	blue, brown, clear, crystal blue, gray, green, violet	Paragon Vision Sciences
	fluorosilicone acrylate	30.0	clear, blue, crystal blue, green, gray	X-Cel Specialty Contacts
FluoroPerm 60	fluorosilicone acrylate	60.0	clear, blue, crystal blue, green, brown	ABB Optical
	fluorosilicone acrylate	60.0	blue, green, brown, clear	Blanchard Contact Lens
	fluorosilicone acrylate	43.0	blue, brown, clear, crystal blue, green, violet	Paragon Vision Sciences
	fluorosilicone acrylate	60.0	clear, blue, crystal blue, green, brown	X-Cel Specialty Contacts
FluoroPerm 92	fluorosilicone acrylate	92.0	clear, blue, green	ABB Optical
	fluorosilicone acrylate	92.0	clear, blue, green	Art Optical Contact Lens
	fluorosilicone acrylate	92.0	blue, green, clear	Blanchard Contact Lens
	fluorosilicone acrylate	64.0	blue, clear, green	Paragon Vision Sciences
	fluorosilicone acrylate	92.0	clear, blue, green	X-Cel Specialty Contacts
Hemlarafilcon A	silicone acrylate	84.0	clear	SynergEyes
Hexa 100	fluorosilicone acrylate	100.0	blue	Blanchard Contact Lens
Hybrid FS	fluorosilicone acrylate	31.0	clear, blue, light blue, green, gray	ABB Optical
	fluorosilicone acrylate	31.0	blue, light blue, green, gray, clear	Contamac
	fluorosilicone acrylate	31.0	blue, gray, green	X-Cel Specialty Contacts
Hydro 2	fluorosilicone acrylate	50.0	blue, ocean blue, soft green	ABB Optical
	fluorosilicone acrylate	50.0	soft blue, green, ocean blue	Blanchard Contact Lens

MATERIALS				
Name	Class	Dk	Colors	Manufacturer
Hydro 2	fluorosilicone acrylate	50.0	ocean blue, soft blue, soft green	Innovision
	fluorosilicone acrylate	50.0	ocean blue, soft green	X-Cel Specialty Contacts
Menicon Z	fluorosilicone acrylate	169.0	blue, clear	Blanchard Contact Lens
	fluorosilicone acrylate	163.0	blue, light blue, clear, D&C green No. 6	Menicon America
	fluorosilicone acrylate	163.0	blue	X-Cel Specialty Contacts
	fluorosilicone acrylate	175.0	blue	ABB Optical
Menicon Z Alpha 1	fluorosilicone acrylate	175.0	blue	ABB Optical
Menicon Z Alpha 6	fluorosilicone acrylate	175.0	blue	ABB Optical
Menicon Z Thin	fluorosilicone acrylate	175.0	blue	ABB Optical
ONSI-56	fluorosilicone acrylate	56.0	clear, blue, dark blue, green, dark green, brown, gray, onzure	ABB Optical
	fluorosilicone acrylate	56.0	blue, green, gray	Blanchard Contact Lens
	fluorosilicone acrylate	56.0	clear, blue, dark blue, gray, green, dark green, brown, blue-violet	Lagado Corporation
	fluorosilicone acrylate	56.0	blue, green, brown	X-Cel Specialty Contacts
OP-2	fluorosilicone acrylate	15.9	clear, blue, green, gray, brown	X-Cel Specialty Contacts
OP-3	fluorosilicone acrylate	30.0	clear, blue, green, brown, gray, dark blue, dark green	X-Cel Specialty Contacts
OP-6	fluorosilicone acrylate	60.0	clear, blue, green, gray, brown	X-Cel Specialty Contacts
Optacryl 60	silicone acrylate	18.0	blue, green, gray	ABB Optical
	silicone acrylate	14.0	blue, green, gray	Paragon Vision Sciences
	silicone acrylate	18.0	blue, green	X-Cel Specialty Contacts
Optimum Classic	fluorosilicone acrylate	26.0	blue, light blue, green, gray	ABB Optical
	fluorosilicone acrylate	28.0	blue, green, gray	Blanchard Contact Lens
	fluorosilicone acrylate	26.0	blue, light blue, green, gray, forest green	Contamac
	fluorosilicone acrylate	26.0	blue, glacier blue, green, gray	X-Cel Specialty Contacts
Optimum Comfort	fluorosilicone acrylate	65.0	blue, light blue, green, forest green, brown, gray	ABB Optical
	fluorosilicone acrylate	60.0	blue, green, brown, gray	Blanchard Contact Lens
	fluorosilicone acrylate	60.0	blue, light blue, green, gray, forest green, brown, red	Contamac
	fluorosilicone acrylate	65.0	blue, glacier blue, green, gray, forest green, brown	X-Cel Specialty Contacts
Optimum Extra	fluorosilicone acrylate	100.0	clear, blue, light blue, green, gray	ABB Optical
	fluorosilicone acrylate	100.0	blue, green, gray	Blanchard Contact Lens
	fluorosilicone acrylate	100.0	blue, light blue, green, gray, clear	Contamac
	fluorosilicone acrylate	100.0	clear, blue, glacier blue, green, gray	X-Cel Specialty Contacts
Optimum Extra 17mm	fluorosilicone acrylate	100.0	blue	X-Cel Specialty Contacts
Optimum Extreme	fluorosilicone acrylate	125.0	blue, light blue, green, gray	ABB Optical
	fluorosilicone acrylate	125.0	blue, green, gray	Blanchard Contact Lens
	fluorosilicone acrylate	125.0	blue, light blue, green, gray	Contamac
	fluorosilicone acrylate	125.0	blue, glacier blue, green, gray	X-Cel Specialty Contacts
Optimum Extreme 17mm	fluorosilicone acrylate	125.0	clear, blue	X-Cel Specialty Contacts
Optimum Infinite	fluorosilicone acrylate	200.0	blue, clear	Blanchard Contact Lens
	fluorosilicone acrylate	200.4	clear, blue, ice blue	Contamac
Paragon HDS	fluorosilicone acrylate	58.0	blue, crystal blue, green, forest green	ABB Optical
	fluorosilicone acrylate	58.0	blue, green, crystal blue	Blanchard Contact Lens
	fluorosilicone acrylate	40.0	crystal blue, emerald green, forest green, sapphire blue, violet	Paragon Vision Sciences

MATERIALS

Name	Class	Dk	Colors	Manufacturer
Paragon HDS	fluorosilicone acrylate	58.0	violet, blue, crystal blue, green, forest green	X-Cel Specialty Contacts
Paragon HDS 100	fluorosilicone acrylate	100.0	blue, green	ABB Optical
	fluorosilicone acrylate	100.0	blue, green	Blanchard Contact Lens
	fluorosilicone acrylate	101.0	autumn red, clear, emerald green, sapphire blue, yellow	Paragon Vision Sciences
	fluorosilicone acrylate	100.0	yellow, sapphire blue, emerald green	X-Cel Specialty Contacts
Paragon HDS 100 17mm	fluorosilicone acrylate	100.0	clear, crystal blue	X-Cel Specialty Contacts
Paragon HDS Hi	fluorosilicone acrylate	22.0	blue, green	X-Cel Specialty Contacts
Paragon Thin	fluorosilicone acrylate	29.0	blue, blue UV, green, green UV	ABB Optical
	fluorosilicone acrylate	29.0	blue, green	Blanchard Contact Lens
	fluorosilicone acrylate	23.0	clear, emerald green, sapphire blue	Paragon Vision Sciences
	fluorosilicone acrylate	29.0	clear, sapphire blue, emerald green	X-Cel Specialty Contacts
Paraperm EW	silicone acrylate	56.0	clear, blue, green	ABB Optical
	silicone acrylate	50.0	blue, clear, green	Paragon Vision Sciences
	silicone acrylate	56.0	clear, blue	X-Cel Specialty Contacts
Paraperm O2	silicone acrylate	15.6	clear, blue, electric blue, green, cool green	ABB Optical
	silicone acrylate	15.6	blue, green, clear, electric blue	Blanchard Contact Lens
	silicone acrylate	16.0	blue, clear, electric blue, green	Paragon Vision Sciences
	silicone acrylate	16.0	clear, blue, electric blue, cool green, green	X-Cel Specialty Contacts
Petrafocon A	fluorosilicone acrylate	130.0	purple	SynergEyes
PMMA	polymethylmethacrylate	0.0	clear, blue, green, brown, gray	ABB Optical
	polymethylmethacrylate	0.0	medium blue, medium green, brown, gray, clear	Blanchard Contact Lens
	polymethylmethacrylate	0.0	clear, violet, light/medium/dark shades of blue, gray, green, brown	Lagado Corporation
	polymethylmethacrylate	0.0	clear, blue, blue 2, brown, brown 2, gray, gray 2, green, green 2, ruby red	X-Cel Specialty Contacts
SA-18	silicone acrylate	18.0	clear, violet, light/medium/dark shades of blue, gray, green, brown	Lagado Corporation
SA-32	silicone acrylate	32.0	clear, violet, light/medium/dark shades of blue, gray, green, brown	Lagado Corporation
	silicone acrylate	32.0	clear, gray, brown, violet	X-Cel Specialty Contacts
SGP I	silicone acrylate	22.0	clear, blue, green, brown, gray	ABB Optical
	silicone acrylate	22.0	green, gray, brown	Purilens/The LifeStyle Company
	silicone acrylate	22.0	green, gray, brown	X-Cel Specialty Contacts
SGP II	silicone acrylate	43.5	clear, blue, green, brown, gray	ABB Optical
	silicone acrylate	43.5	blue, green, gray, brown	Purilens/The LifeStyle Company
	silicone acrylate	43.5	green, gray	X-Cel Specialty Contacts
SGP III	fluorosilicone acrylate	43.5	clear, blue, green	ABB Optical
	fluorosilicone acrylate	43.5	blue, green, clear	Purilens/The LifeStyle Company
	fluorosilicone acrylate	43.5	clear, green	X-Cel Specialty Contacts
Tyro 97	fluorosilicone acrylate	97.0	clear, blue, green, brown, gray	ABB Optical
	fluorosilicone acrylate	97.0	blue, green	Blanchard Contact Lens
	fluorosilicone acrylate	97.0	blue, green, gray	X-Cel Specialty Contacts
	fluorosilicone acrylate	97.0	clear, blue, dark blue, gray, green, blue/green	Lagado Corporation
Ultratech 25		50.0	clear, blue, dark blue, green, gray, brown	X-Cel Specialty Contacts
Ultratech H2O		50.0	ocean blue, soft green, extra dark blue, green, dark forest green	X-Cel Specialty Contacts

DISTRIBUTORS

Name	Lenses and Materials Carried		
ABB Optical	Boston Envision Boston EO Boston Equalens Boston Equalens II Boston ES Boston II Boston IV Boston XO CRT Ortho-K/Normal eyes Essential	Essential CSA Essential Xtra Fluorex 300 Fluorex 500 Fluorex 700 FluoroPerm 30 FluoroPerm 60 FluoroPerm 92 Hybrid FS Hydro 2	Jupiter/Europa Lifestyle GP/Lifestyle Marquis Menicon Z Optacryl 60 Paraperm EW Paraperm O2 PMMA SGP I SGP II
Alden (Bausch + Lomb)	Zenlens RC	Zenlens scleral	
Art Optical Contact Lens	Achievement AKS Ampleye Scleral Artcon Back Toric Bitoric Boston Envision Boston EO Boston Equalens Boston Equalens II Boston ESa Boston II Boston IV Boston Multivision Boston XO Boston XO2 ClasikCN Custom DW OrthoK Expert Progressive Flosi Fluorex 300 Fluorex 500 Fluorex 700	FluoroPerm 30 FluoroPerm 60 Front Toric Hybrid FS Hydro 2 Lifestyle Marquis Lifestyle Multifocal MagniClear MagniClear Plus Menicon Z mPower Multifocal One Piece Bifocal Onsi 56 Optimum Classic Optimum Extra Optimum Extreme Paragon CRT Paragon CRT Dual Axis Paragon CRT Sure Fit Paragon HDS Paragon HDS 100 Paragon Z CRT Paragon Z CRT Dual Axis	Paragon Z CRT Sure Fit Paraperm EW Paraperm O2 Renovation E Multifocal Renovation Multifocal Reverse Geometry Rose K2 Rose K2 IC Rose K2 NC Rose K2 PG Rose K2 XL SA 18 SA 32 SGP I SGP II SGP III SoClear Aspheric SoClear Kone SoClear Progressive Thiniste Thiniste 2 Menicon Z
Bausch + Lomb	Boston EO Envision	Boston MultiVision	
Blanchard Contact Lens	Bi-Symmetry CentraCone Bi-Symmetry CentraGraft CentraCone CentraGraft Essential CSA Essential CSA Xtra Essential Multifocal Essential Xtra Multifocal Evolution Aspheric Multifocal MSD Mini Scleral Lens	Onefit Asian Multifocal Scleral Lens Onefit Asian Oblate Scleral Lens Onefit Asian Scleral Lens Onefit MED Multifocal Scleral Lens Onefit MED Oblate Scleral Lens Onefit MED Scleral Lens Onefit Multifocal Scleral Lens Onefit Oblate Scleral Lens Onefit Scleral Lens Reclaim HD (Bi-Aspheric Multifocal)	Rose K Rose K2 Rose K2 Abberation Control Rose K2 Irregular Cornea Rose K2 Nipple Cone Rose K2 Post Graft Rose K2 XL RSS (Refractive Surgery Specific)
California Optics	Optacryl 60 PMMA	SGP I SGP II	SGP III
GP Specialists	Boston EO Boston EO Envision Boston Equalens Boston Equalens II Boston ES Boston II Boston IV Boston XO CRT-Ortho K Fluorex 300 Fluorex 500 Fluorex 700 FluoroPerm 30	FluoroPerm 60 FluoroPerm 92 Gov-Ortho K Hydro 2 iSee-Ortho K iSight Scleral Optacryl 60 Optimum Classic Optimum Comfort Optimum Extra Optimum Extreme OrthoTool Paragon HDS	Paragon HDS 100 Paragon Thin Paraperm EW Paraperm O2 PMMA SA 18 SA 32 SGP I SGP II SGP III Softsilk

DISTRIBUTORS

Name		Lenses and Materials Carried	
Lens Mode		Hi Rider GP Multifocal Ortho-K Porus	Porus F Porus F for Keratoconus Scleral (15.0-18.0mm) Semi Scleral (13.5mm)
Metro Optics	Accucon Base Toric Bitoric Boston EO Boston Equalens EW Boston ES Boston IV Boston XO Boston XO2 ComfortKone FluoroPerm 30	FluoroPerm 60 FluoroPerm 92 EW Front Toric Genesis Scleral InSight Scleral Menicon Z Metro-Seg Metro-Seg Crescent Bifocal Onsi 56 Optimum Classic Optimum Comfort	Optimum Extra Optimum Extreme Paragon HDS Paragon Thin Progressive Progressive Base: Aspheric Multifocal RSA SGP I SGP III
SynergEyes	ClearKone Duette Duette Multifocal Duette Progressive SynergEyes A	SynergEyes GP SynergEyes GP II SynergEyes KC SynergEyes Multifocal SynergEyes PS	SynergEyes VS Scleral UltraHealth UltraHealth FC
X-Cel Specialty Contacts	Apex Apogee Arc Seg Aspheric Peripheral Aspheric Peripheral Thin Atlantis 3D Atlantis Front Toric Atlantis Large Diameter Atlantis Multifocal Atlantis Scleral Atlantis Toric PC Bitoric Boston Envision Boston MultiVision Crystalvue	CV 4 Multifocal Emerald Emerald 163 Essential Solution Ful Vue Full Cornea Generations ACF Infinity Inside Toric Irregular Cornea Reverse Geometry Northern Lites Optimum Extra Optimum Extreme Outside Toric Paragon HDS 100	Pinnacle Pinnacle LD Pro Plus PTF Tricurve Reverse Geometry S10 SK2000 Solution Bifocal Spherical Starlens Titan Large Diameter Vision Toric Visions X-Cel Thin Menicon Z

Diopters (D) to millimeters of radius (mm)

POWER CONVERSION

Dmm	Dmm	Dmm	Dmm	Dmm	Dmm	Dmm
36.00.....9.38	39.00.....8.65	42.00.....8.04	45.00.....7.50	48.00.....7.03	51.00.....6.62	54.00.....6.25
36.12.....9.34	39.12.....8.63	42.12.....8.01	45.12.....7.48	48.12.....7.01	51.12.....6.60	54.12.....6.24
36.25.....9.31	39.25.....8.60	42.25.....7.99	45.25.....7.46	48.25.....7.00	51.25.....6.59	54.25.....6.22
36.37.....9.28	39.37.....8.57	42.37.....7.97	45.37.....7.44	48.37.....6.98	51.37.....6.57	54.37.....6.21
36.50.....9.25	39.50.....8.55	42.50.....7.94	45.50.....7.42	48.50.....6.96	51.50.....6.55	54.50.....6.19
36.62.....9.22	39.62.....8.52	42.62.....7.92	45.62.....7.40	48.62.....6.94	51.62.....6.54	54.62.....6.18
36.75.....9.18	39.75.....8.49	42.75.....7.90	45.75.....7.38	48.75.....6.92	51.75.....6.52	54.75.....6.16
36.87.....9.15	39.87.....8.46	42.87.....7.87	45.87.....7.36	48.87.....6.91	51.87.....6.51	54.87.....6.15
37.00.....9.12	40.00.....8.44	43.00.....7.85	46.00.....7.34	49.00.....6.89	52.00.....6.49	55.00.....6.14
37.12.....9.09	40.12.....8.41	43.12.....7.83	46.12.....7.32	49.12.....6.87	52.12.....6.48	55.12.....6.12
37.25.....9.06	40.25.....8.39	43.25.....7.80	46.25.....7.30	49.25.....6.85	52.25.....6.46	55.25.....6.11
37.37.....9.03	40.37.....8.36	43.37.....7.78	46.37.....7.28	49.37.....6.84	52.37.....6.44	55.37.....6.10
37.50.....9.00	40.50.....8.33	43.50.....7.76	46.50.....7.26	49.50.....6.82	52.50.....6.43	55.50.....6.08
37.62.....8.97	40.62.....8.31	43.62.....7.74	46.62.....7.24	49.62.....6.80	52.62.....6.41	55.62.....6.07
37.75.....8.94	40.75.....8.28	43.75.....7.72	46.75.....7.22	49.75.....6.78	52.75.....6.40	55.75.....6.05
37.87.....8.91	40.87.....8.26	43.87.....7.69	46.87.....7.20	49.87.....6.77	52.87.....6.38	55.87.....6.04
38.00.....8.88	41.00.....8.23	44.00.....7.67	47.00.....7.18	50.00.....6.75	53.00.....6.37	56.00.....6.03
38.12.....8.85	41.12.....8.21	44.12.....7.65	47.12.....7.16	50.12.....6.73	53.12.....6.35	56.12.....6.01
38.25.....8.82	41.25.....8.18	44.25.....7.63	47.25.....7.14	50.25.....6.72	53.25.....6.34	56.25.....6.00
38.37.....8.80	41.37.....8.16	44.37.....7.61	47.37.....7.12	50.37.....6.70	53.37.....6.32	56.37.....5.99
38.50.....8.77	41.50.....8.13	44.50.....7.58	47.50.....7.11	50.50.....6.68	53.50.....6.31	56.50.....5.97
38.62.....8.74	41.62.....8.11	44.62.....7.56	47.62.....7.09	50.62.....6.67	53.62.....6.29	56.62.....5.96
38.75.....8.71	41.75.....8.08	44.75.....7.54	47.75.....7.07	50.75.....6.65	53.75.....6.28	56.75.....5.95
38.87.....8.68	41.87.....8.06	44.87.....7.52	47.87.....7.05	50.87.....6.63	53.87.....6.26	56.87.....5.94

Earn up to
12 CE
Credits*

SAVE THE DATE!

The Optometric Retina Society & Review Education Group Present:

RETINAUPDATE2019

December 6 - 7 • Scottsdale, AZ

Fairmont Scottsdale Princess

7575 East Princess Drive
Scottsdale, AZ 85255

A limited number of rooms have been reserved at \$269 per night plus applicable taxes. Make your reservations with the hotel directly at 480-585-4848, mentioned "Review's Optometric Retina Society Meeting" for group rate.

Festive Fun Throughout the Resort

10th Annual Winter Wonderland featuring 4 million twinkling lights with lots of fun family activities

Early Bird Registration Cost: \$375

Early Bird pricing ends October 4, 2019.

ORS MISSION STATEMENT

The mission of the Optometric Retina Society (ORS) is to promote the advancement of vitreoretinal knowledge for clinicians, ophthalmic educators, residents, and students. The ORS is dedicated to posterior segment disease prevention, diagnosis, management and co-management.



THREE WAYS TO REGISTER

Email: reviewmeetings@jhihealth.com or Call: 800-999-0975

Online: www.reviewsce.com/ORSRetUpdate2019



Administered by



*Approved



Review Education Group partners with Salus University for those ODs who are licensed in states that require university credit. This activity, COPE Activity Number 117855, is accredited by COPE for continuing education for optometrists.

Earn up to
19 CE
Credits*

NEW TECHNOLOGIES
& TREATMENTS IN
2019 EYE CARE

REVIEW
EDUCATION GROUP



CHARLESTON, SOUTH CAROLINA

Date:

November 1-3, 2019

Location:

Charleston Marriott

170 Lockwood Blvd., Charleston, SC 29403

Reservations: 1-800-228-9290

A limited number of rooms have been reserved at the rate of **\$229/night**. Please book with the hotel directly by calling the number above. Mention "Review's New Technologies & Treatments" for group rate.



Program Chair:

Paul Karpecki, OD, FAAO

Early Bird Special: \$420

Register before September 9, 2019 for early bird pricing.

Three Ways to Register

Online: www.reviewsce.com/Charleston2019

Call: 1-866-658-1772

E-mail: reviewmeetings@jhihealth.com

REGISTER ONLINE: WWW.REVIEWSCE.COM/CHARLESTON2019

Administered by:

REVIEW
EDUCATION GROUP

COPE[®]

*Approval pending



SALUS
UNIVERSITY

Pennsylvania College of Optometry

Partially supported by
unrestricted educational grants from:

Sun Pharmaceuticals

Bausch & Lomb

Carl Zeiss Meditec

Alcon

Review Education Group partners with Salus University for those ODs who are licensed in states that require university credit. See www.reviewsce.com/events for any meeting schedule changes or updates.

SOFT LENS CARE

Manufacturer	Name	Active Ingredients & Preservatives
Daily Cleaners		
Alcon	Opti-Free Puremoist	Sodium citrate, sodium chloride, boric acid, sorbitol, aminomethylpropanol, disodium EDTA, tetriconic 1304, HydraGlyde. Preserved with Polyquad 0.001% and Aldox 0.0006%.
Bausch + Lomb	Sensitive Eyes Daily Cleaner	Surfactant, borate buffer system, sodium chloride, hydroxypropyl methylcellulose, edetate disodium 0.5%, sorbic acid 0.25%.
Lobob Laboratories	Sof/Pro 2 Extra Strength Daily Cleaner	Purified water, isopropyl alcohol 15.7%, poloxamer 407, amphoteric 10.
Optikem International	Sereine Extra Strength Daily Cleaner	Amphoteric surfactant, poloxamer 407, isopropyl alcohol.
Purilens	PuriLens Plus Disinfecting System	Uses UVC to disinfect and subsonic agitation to remove protein, lipids and other debris.
Disinfecting Systems		
Johnson & Johnson Vision Care	Complete MPS Easy Rub Formula	Polyhexamethylene biguanide 0.0001%, phosphate buffer, poloxamer 237, edetate disodium, solution chloride, potassium chloride, purified water. Contains no chlorhexidine or thiomersal.
Alcon	Opti-Free Multi-Purpose Solution	Tetriconic 1304, sodium citrate, AMP-95, boric acid, sodium chloride, sorbitol, edetate disodium, Polyquad 0.001%, Aldox 0.0005%.
	Clear Care Cleaning & Disinfecting Solution	Hydrogen peroxide 3%, sodium chloride 0.79%, phosphonic acid, phosphate buffer, pluronic 17R4. Preservative-Free.
	Clear Care	Hydrogen peroxide 3%, sodium chloride 0.79%, phosphonic acid, pluronic 17R4.
	Clear Care Plus	Hydrogen peroxide 3%, phosphonic acid, sodium chloride 0.79%, phosphate, pluronic 17R4, HydraGlyde.
Bausch + Lomb	Biotrue Multi-Purpose Solution	Hyaluronan, sulfobetaine, poloxamine, boric acid, sodium borate, edetate disodium, sodium chloride. Preserved with polyaminopropyl biguanide 0.00013% and polyquaternium 0.0001%.
	Renu Advanced Formula Multi-Purpose Solution	Poloxamine, poloxamer 181, diglycine, sodium citrate, boric acid, sodium borate, edetate disodium, sodium chloride. Preserved with polyaminopropyl biguanide 0.00005%, polyquaternium 0.00015%, lexicidine 0.0002%.
Johnson & Johnson Vision Care	Oxysept	Disinfecting solution: hydrogen peroxide 3% (stabilized with sodium stannate and sodium nitrate, buffered with phosphates) and purified water. neutralizing tablets: catalase, hydroxypropyl methylcellulose and cyanocobalamin (vitamin B12) with buffering and tableting agents.
	Blink RevitaLens Multi-Purpose Disinfecting Solution	Alexidine dihydrochloride 0.00016%, polyquaternium 10.0003%, boric acid, sodium borate, tetriconic 904, edetate disodium, sodium citrate, sodium chloride, purified water.
	Acuvue RevitaLens Multi-Purpose Disinfecting Solution	Alexidine dihydrochloride 0.00016%, polyquaternium-1 0.0003% as preservatives/disinfectants; boric acid, sodium borate, tetriconic 904, edetate disodium, sodium chloride and purified water.
Purilens	PuriLens Plus Disinfecting System	Uses UVC to disinfect and subsonic agitation to remove protein, lipids and other debris.
CooperVision	Refine One Step	Hydrogen peroxide 3%, poloxamer 0.00025%, phosphonic acid, phosphates.
	Lite	Poloxamer, sodium phosphate buffer, sodium chloride, disodium edetate. Preserved with polyhexanide 0.0001%. Contains no chlorhexidine or thiomersal.
Enzymatic Cleaners		
Bausch + Lomb	Boston One-Step Enzymatic Cleaner	Proteolytic enzymes (subtilisin), glycerol. Preservative-free.
Johnson & Johnson Vision Care	Ultrasym Enzymatic Cleaner	Subtilisin A.
Non-preserved Saline		
Menicon America	LacriPure Saline Solution	Sodium chloride. Preservative-free.
Purilens	Purilens Plus Preservative Free Saline	Sodium chloride. Preservative-free.
Non-thimerosal Preserved Saline		
Alcon	Clear Care Rinse & Go	Sodium chloride, citrate, citric acid, edetate disodium 0.05% and Polyquad 0.001%.
Bausch + Lomb	Sensitive Eyes Plus Saline Solution	Polyaminopropyl biguanide 0.00003%, edetate disodium 0.025%.
Rewetting Drops		
Alcon	Systane Contacts Rewetting Drops	Dextran, sodium chloride, potassium chloride, hydroxypropyl methylcellulose. Preserved with edetate disodium 0.1% and Polyquad 0.001%.
	Opti-Free Express Rewetting Drops	Citrate buffer, sodium chloride, edetate disodium 0.05%, Polyquad 0.001%.
	Opti-Free Puremoist Rewetting Drops	Citrate/borate, sodium chloride, edetate disodium 0.05%, Polyquad 0.001%, RLM-100 (PEG-11 lauryl ether carboxylic acid), tetriconic 1304.
	Opti-Free Replenish Rewetting Drops	Citrate/borate, sodium chloride, edetate disodium 0.05%, Polyquad 0.001%, RLM-100 (PEG-11 lauryl ether carboxylic acid), tetriconic 1304.
Allergan	Refresh Contact Lens Comfort Drops	Carboxymethylcellulose sodium, sodium chloride, boric acid, sodium borate decahydrate, potassium chloride, calcium chloride, magnesium chloride, purified water. May also contain hydrochloric acid and/or sodium hydroxide to adjust pH.
Bausch + Lomb	ReNu MultiPlus Lubricating & Rewetting Drops	Povidone, boric acid, potassium chloride, sodium borate, sodium chloride, edetate disodium, sorbic acid.
	ReNu Rewetting Drops	Boric acid, poloxamine, sodium borate, sodium chloride, sorbic acid 0.15%, edetate disodium 0.1%.
	Sensitive Eyes Rewetting Drops	Boric acid, sodium borate, sodium chloride. Preserved with sorbic acid 0.1% and edetate disodium 0.025%.
Johnson & Johnson Vision Care	Blink-N-Clean Lens Drops	Purified water, sodium chloride, polyhexamethylene biguanide 0.0001%, tromethamine, hydroxypropyl methylcellulose, tyloxapol and edetate disodium.
	Blink Contacts Lubricant Eye Drops	Purified water, sodium hyaluronate, sodium chloride, potassium chloride, calcium chloride, magnesium chloride and boric acid. Preserved with OcuPure (stabilized oxychloro complex) 0.005%.
	Visine for Contacts	Borate buffer, hypromellose, glycerin. Preserved with potassium sorbate and edetate disodium.

HyClear[®]

The ONLY Balanced Analytic Hypochlorous Acid™

for Essential Daily Eyelid Health Management



Introducing the next generation of hypochlorous acid for essential daily eyelid health management. With a broad-spectrum of antimicrobial activity from the pure hypochlorous acid .01%, HyClear kills most ocular pathogens in 15 seconds*.

HyClear is an exclusive brand for Optometrists and Ophthalmologists for sale directly to their patients. It will provide a safe, easy to use treatment for eyelid hygiene without the high cost or hassle of being a prescription product.

Visit getHyClear.com
and create an account today!

*In solution.

GP/SCLERAL LENS CARE

Manufacturer	Name	Active Ingredients & Preservatives
All-in-one Solutions		
Bausch + Lomb	Boston Simplus Multi-Action Solution	Poloxamine, hydroxyalkylphosphonate, boric acid, sodium borate, sodium chloride, hydroxypropylmethyl cellulose, glucam and preserved with chlorhexidine gluconate 0.003% and polyaminopropyl biguanide 0.0005%.
Menicon America	Unquie pH	Hydroxypropyl guar, polyethylene glycol, tetriconic 1304, boric acid, propylene glycol and is preserved with polyquad 0.0011% and edetate disodium 0.01%.
Cleaning/Soaking Solutions		
Lobob Laboratories	Optimum by Lobob CDS Cleaning, Disinfection and Storage Solution	Lauryl sulfate salt of imidazoline, octylphenoxypolytheoxy-ethanol, and preserved with benzyl alcohol 0.3% and disodium edetate 0.5%.
Menicon America	Menicon Progent	Solution A: sodium hypochlorite (NaClO), sodium carbonate, sodium hydroxide, purified water. Solution B: potassium bromide, sodium carbonate, purified water. Rinsing Solution: sterile purified water.
Optikem International	Sereine Soaking and Cleaning Solution	Nonionic and amphoteric surfactants, buffers, edetate disodium 0.25%, benzalkonium chloride 0.01%.
Daily Cleaners		
Alcon	Opti-Free PureMoist	Sodium citrate, sodium chloride, boric acid, sorbitol, aminomethylpropanol, disodium EDTA, tetriconic 1304 and HydraGlyde with polyquad 0.001% and aldox 0.0006% preservatives.
Alcon	Opti-Free Replenish	Sodium citrate, sodium chloride, sodium borate, propylene glycol, tetriconic 1304, nonanoyl ethylenediaminetriacetic acid with polyquad 0.001% and aldox 0.0006% preservatives.
Alcon	Opti-Free Express	Sodium citrate, sodium chloride, boric acid, sorbitol, aminomethylpropanol, tetriconic 1304 with edetate disodium 0.05%, polyquad 0.001% and aldox 0.0006% preservatives.
Bausch + Lomb	Boston Advance Cleaner	Alkyl ether sulfate, ethoxylated alkyl phenol, tri-quaternary cocoa-based phospholipid and silica gel.
Bausch + Lomb	Boston Original Cleaner	Alkyl ether sulfate and silica gel, with titanium dioxide and fragrance.
Lobob Laboratories	Lobob Hard Contact Lens Cleaning Solution	Anionic detergents.
Lobob Laboratories	Optimum By Lobob ESC Extra Strength Cleaner	Non-preserved alkaline solution of cocoamphodiacetate and glycols.
Optikem International	Sereine Cleaner	Amphoteric surfactants, edetate disodium 0.10% and benzalkonium chloride 0.01%.
Enzymatic Cleaners		
Bausch + Lomb	Boston One Step Liquid Enzymatic Cleaner	Proteolytic enzyme (subtilisin) and glycerol. Preservative-free.
Laboratory Strength Cleaners		
Bausch + Lomb	Boston Laboratory Lens Cleaner	Water-soluble surfactants and 10% 2-propanol.
Optikem International	Con-Sure	Nonionic and anionic surfactants, ethanol aqueous base, edetate disodium.
Rewetting Drops		
Abbott Medical Optics	Blink Contacts Lubricating Eye Drops	Purified water, sodium hyaluronate, sodium chloride, potassium chloride, calcium chloride, magnesium chloride, boric acid; preserved with stabilized oxychloro complex 0.005%.
Abbott Medical Optics	Blink-N-Clean Lens Drops	Purified water, sodium chloride and preserved with polyhexamethylene biguanide 0.0001% tromethamine, hydroxypropyl methylcellulose, tyloxapol and edetate disodium.
Alcon	Opti-Free Replenish Rewetting Drops	Citrate/borate buffer and sodium chloride with edetate disodium 0.05%, polyquad 0.001%, RLM-100 (PEG-11 lauryl ether carboxylic acid) and tetriconic 1304.
Alcon	Systane Contacts Rewetting Drops	Dextran, sodium chloride, potassium chloride, and hydroxypropyl methylcellulose, with edetate disodium 0.1% and polyquad 0.001% preservatives.
Bausch + Lomb	Boston Rewetting Drops	Cationic cellulose derivative polymer, polyvinyl alcohol, hydroxyethyl cellulose, chlorhexidine gluconate 0.006% and edetate disodium 0.05%.
Lobob Laboratories	Optimum By Lobob 'WRW' Wetting and Rewetting Drop	Sodium and potassium chloride salts, polyvinylpyrrolidone, polyvinyl alcohol, hydroxyethyl cellulose, sodium bisulfite, benzyl alcohol, sorbic acid, disodium edetate.
Optikem International	Sereine Wetting Solution	Polyvinyl alcohol, buffers, edetate disodium 0.1% and benzalkonium chloride 0.01%.
Wetting/Soaking Solutions		
Bausch + Lomb	Boston Advance Conditioning Solution	Polyethylene glycol, cellulosic viscosifier, cationic cellulose derivative polymer, polyvinyl alcohol, chlorhexidine gluconate 0.0003%, polyaminopropyl biguanide 0.0005% and edetate disodium 0.05%.
Bausch + Lomb	Boston Original Conditioning Solution	Cationic cellulose derivative polymer, hydroxyethyl cellulose and polyvinyl alcohol, with chlorhexidine gluconate 0.006% and edetate disodium 0.05% preservatives.
Optikem International	Sereine Wetting and Soaking Solution	Preserved with edetate disodium and benzalkonium chloride.

brighten each day.
prescribe a high-oxygen lens
with a low-oxygen price.



clariti® 1 day

Give your patients a fresh perspective with clariti® 1 day, a full family of breathable, affordable silicone hydrogel lenses. [prescribclariti.com](https://www.prescribclariti.com)



Don't let Irritating Lens Face ruin your patients' important moments.

Recommend OPTI-FREE® Puremoist® with HydraGlyde® Moisture Matrix to help your patients stay comfortable in their contact lenses from morning 'til night.¹

3X fewer patients report end-of-day dryness^{2*}

*Compared to habitual lens care solutions (at baseline); Based on patient responses to a survey after trying OPTI-FREE® Puremoist® solution for 2 weeks; n=10,602



SEE COMFORTABLY.™

1. Lally J, Ketelson H, Borazjani R, Senchyna M, Napier L. A new lens care solution provides moisture and comfort with today's contact lenses. *Optician*. 2011;241(6296):42-46. 2. Lemp J, Kern JR. Results from a global survey of contact lens-wearer satisfaction with OPTI-FREE® Puremoist® Multi-Purpose Disinfecting Solution. *Clinical Optometry*. 2013;5:39-46.